

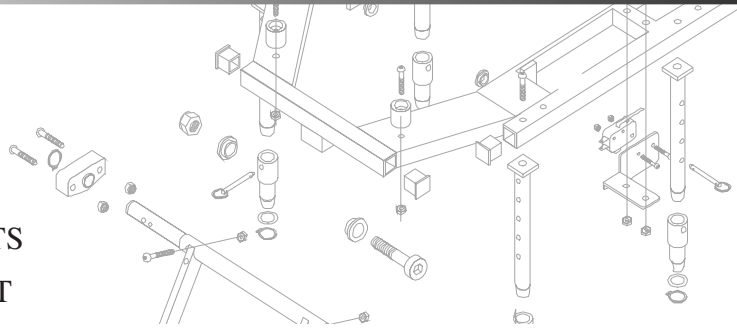
Pride Mobility Products Corp.

Date: 08/15/05

To: QUANTUM REHAB SPECIALISTS

From: QUANTUM PRODUCT SUPPORT

Subject: TRU-BALANCE SWITCH-IT INDICATOR LED AND FUSE FUNCTIONS



TRU-BALANCE SWITCH-IT ELECTRONIC SEAT CONTROLLER BOX INDICATOR LED AND FUSE FUNCTIONS

Quantum Rehab Product Support would like to offer the following information regarding the SWITCH-It electronic seat controller box. There are two fuses and an LED on the front panel that are important to the SWITCH-It electronic seat controller box operation. See figure 1. The *10-amp* fuse is used to help protect the actuator circuit. If this fuse opens or “blows,” the SWITCH-It electronic seat controller box will still have power, but *the actuator(s) will not operate*. The *1-amp* fuse is used to help protect the Switch-It power circuit. If the *1-amp* fuse opens or “blows,” then the SWITCH-It electronic seat controller box will *have no power and the actuator(s) will not operate*.

To change a fuse:

1. Use a screwdriver to gently push in the fuse holder and rotate it a quarter turn counterclockwise.
2. Remove the old fuse.
3. Install a new fuse.
4. Use a screwdriver to gently push in the fuse holder and rotate it a quarter turn clockwise.

The Drive Status LED will flash to indicate the SWITCH-It electronic controller box status as follows:

- The LED flashes ONCE every five seconds - **Power on and normal.**
- The LED remains ON for five seconds and OFF for five seconds - **Drive lock out.**
- The LED flashes for ½ second for five seconds and remains OFF for five seconds - **Speed inhibit.**
- The LED flashes for ¼ second ON and ¼ second OFF for five seconds and remains OFF for five seconds - **Top board error.**

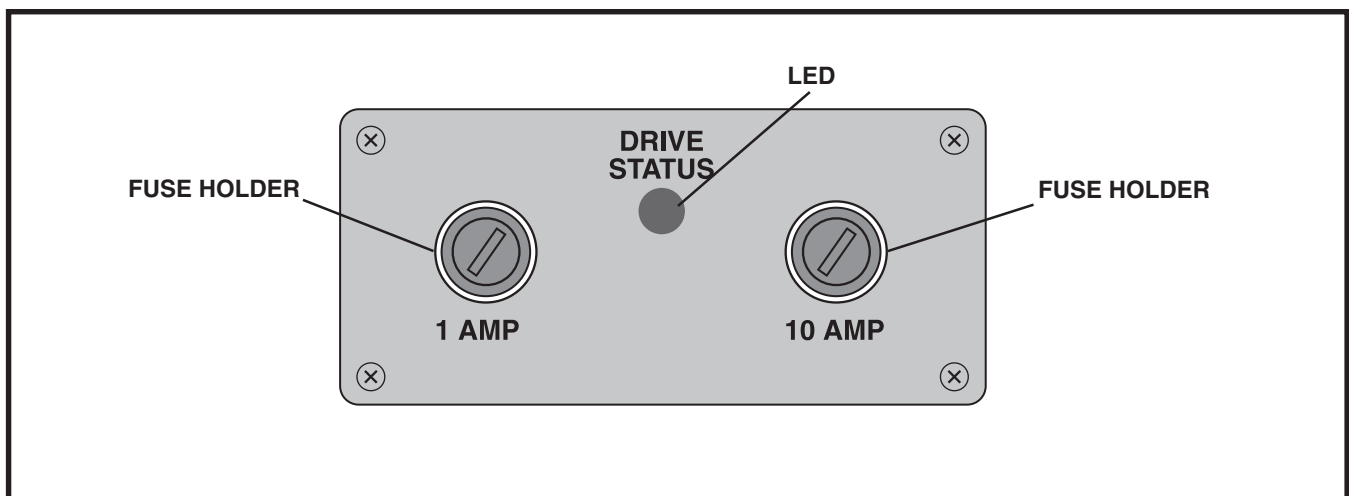


Figure 1. SWITCH-It Electronic Seat Controller Box Front Panel

For more information regarding this announcement, please contact Quantum Rehab Product Support at 1-866-800-2002.