

- | | | | | | |
|---|--|---|-----------------------|----|-----------------|
| 1 | Q-LOGIC JOYSTICK | 5 | BATTERY CABLE | 9 | LEFT MOTOR |
| 2 | POWER MODULE | 6 | FRONT BATTERY HARNESS | 10 | CIRCUIT BREAKER |
| 3 | BUS CABLE | 7 | REAR BATTERY HARNESS | 11 | RUN PLUG |
| 4 | POWER TAKE-OFF/INHIBIT HARNESS
(OR 14-PIN RUN PLUG) | 8 | RIGHT MOTOR | | |

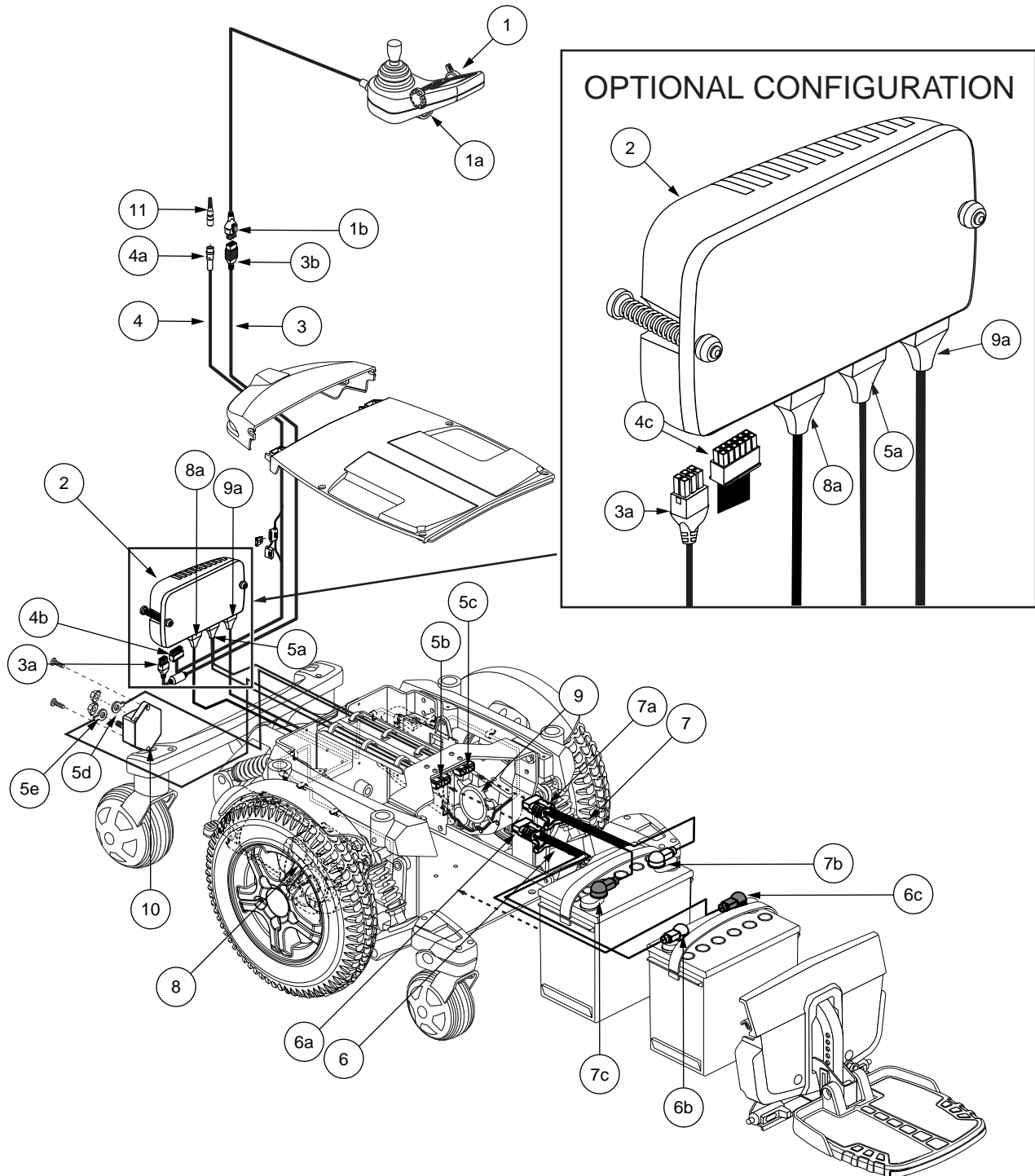


Diagram 1. Quantum 6000 Q-Logic Troubleshooting Key

SECTION 2 - POWER IS ON, BUT POWER CHAIR WILL NOT DRIVE

Symptoms:

- The battery condition meter LEDs scroll.
- The power chair will not drive.
- When joystick is deflected, charger inhibit error #107 is displayed.
- Off-board charger is not plugged into Q-Logic joystick.

Diagnosis:

There is an open in the inhibit circuit.

Solution:

Use the following procedure to find the source of the fault:

NOTE: If power chair is not equipped with a PTO harness and a round 4-pin barrel connector, it will have a 14-pin run plug in connector 2e. If the power chair is equipped with the 14-pin run plug, go to step 3.

1. Locate the 4-pin water-tight barrel connector 4a. See **diagram 2**.
2. Place a jumper between pin 3 and 4 of connector 4a. See **figure 12**.
 - If the power chair drives and is not equipped with a power positioning system, then replace the run plug (11).
 - If the power chair drives and is equipped with a power positioning system, then refer to the troubleshooting guide for that specific seating system.
 - If the unit does not drive, then go to the next step.
3. Unplug connector 4b, or the 14-pin run plug (4c) if equipped, from connector 2e. See **diagram 3**.
4. Place a jumper from pin 1 to pin 9 on connector 2e. See **figure 13**.
 - If power chair drives, then replace the power take off/inhibit harness (4) (or 14-pin run plug (4c) if equipped) and retest the system.
 - If the power chair does not drive, the power module may be programmed incorrectly. Verify the inhibit program. See **figure 14**. The inhibit should be set to “high.”
 - If the power chair does not drive and the inhibit program was verified, then replace the power module (2) and retest the system.

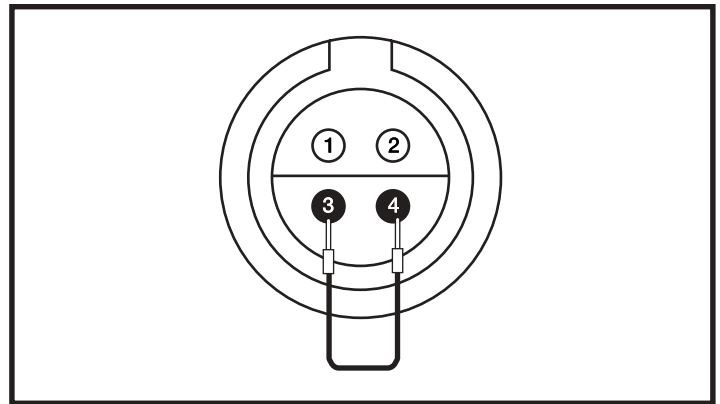


Figure 12. Connector 4a

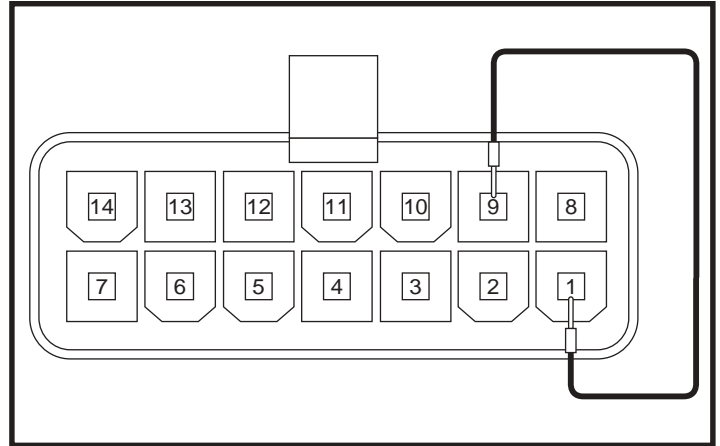


Figure 13. Connector 2e

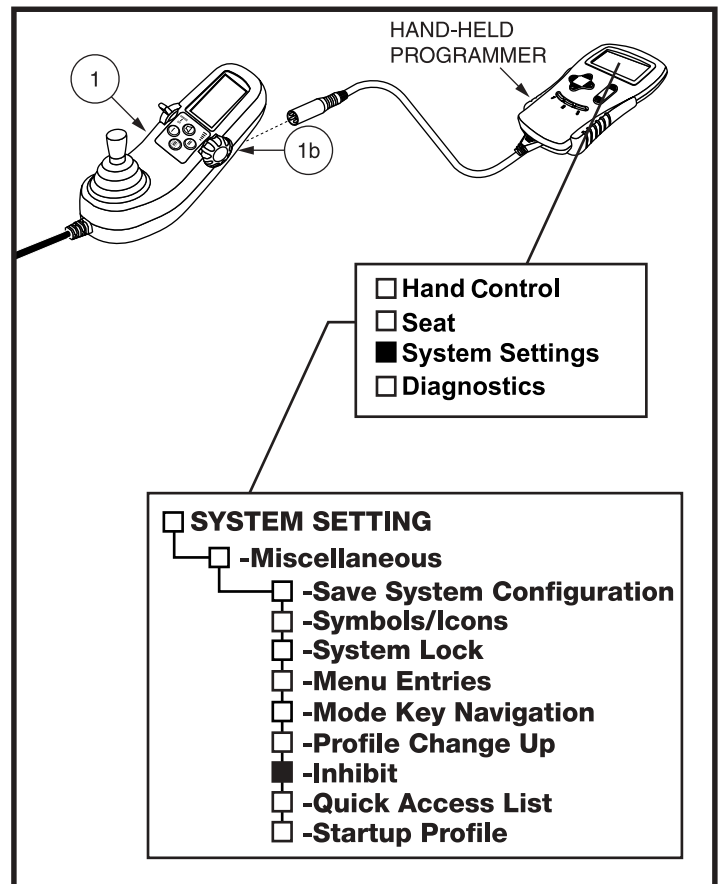


Figure 14. Inhibit Controller Programming