

- |  |                         |                    |
|--|-------------------------|--------------------|
| 1 Q-LOGIC JOYSTICK                                       | 5 BATTERY CABLE         | 9 LEFT MOTOR       |
| 2 POWER MODULE   | 6 FRONT BATTERY HARNESS | 10 CIRCUIT BREAKER |
| 3 BUS CABLE  | 7 REAR BATTERY HARNESS  | 11 RUN PLUG        |
| 4 POWER TAKE-OFF/INHIBIT HARNESS<br>(OR 14-PIN RUN PLUG) | 8 RIGHT MOTOR           |                    |

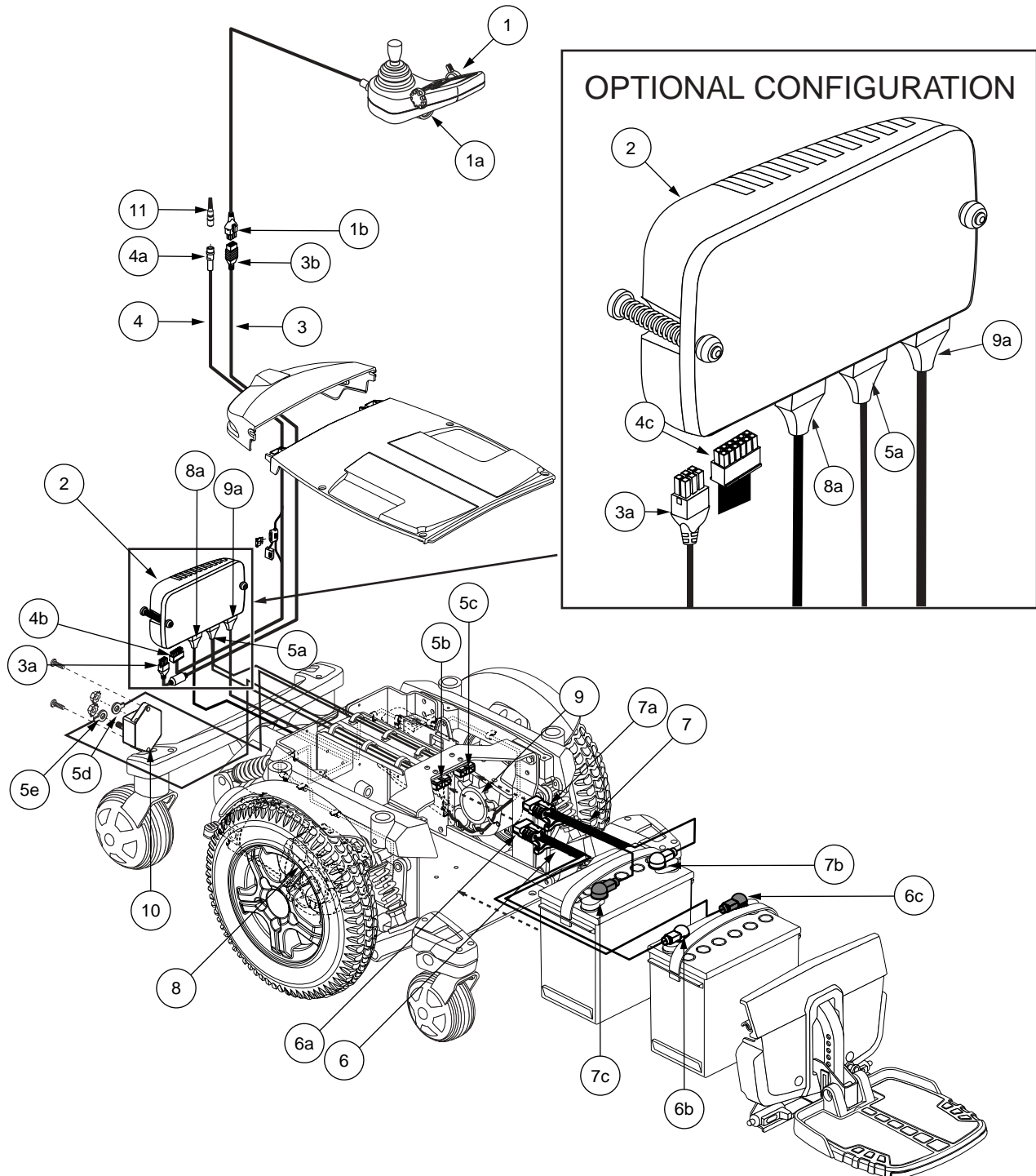


Diagram 1. Quantum 6000 Q-Logic Troubleshooting Key