

Flash Code #6 - Inhibit Active

Symptoms:

Battery condition meter LEDs scroll left to right.

Diagnosis:

- An off-board charger is connected to the off-board charger socket (1a).
- There is a short between pin 2 and pin 3 of connector 1a.

Solution:

If the VSI controller indicates an inhibit active fault and there is no off-board charger plugged into connector 1a, then replace the VSI controller (1) and retest the system.

Flash Code #7 - Possible Joystick Fault

Symptoms:

There are seven battery condition meter LEDs flashing.

Diagnosis:

- The VSI controller has a problem with the joystick (gimble).
- The joystick was out of the neutral (center) position when powered up. The battery condition meter LEDs will ripple side-to-side twice, then display seven flashing LED's.

NOTE: *If the battery condition meter is showing seven flashing LEDs, make sure there is no physical damage to the joystick keeping it from returning to the neutral (center) position.*

Solution:

Use the following procedure to find the source of the fault:

1. Turn the VSI off. Make sure the joystick is not being depressed in any direction.
 2. Turn the VSI back on.
- *If the VSI still displays this fault, replace the VSI controller (1) and retest the system.*

Flash Code #8 - Possible Controller Fault

Symptoms:

There are eight battery condition meter LEDs flashing.

Diagnosis:

This is an indication that there is a problem with the VSI controller.

— *If this fault occurs, replace the VSI controller (1) and retest the system.*

Flash Code #9 - Solenoid Brake Fault

Symptoms:

Nine Battery Condition Meter LEDs Flashing

Diagnosis:

There is an open on the motor brakes.

Solution:

Use the following procedure to find the source of the fault:

1. Unplug connector 1c from connector 2a.
2. Measure resistance across pin 7 and pin 9 and across pin 8 and pin 9 on connector 2a. **See figure 37.**

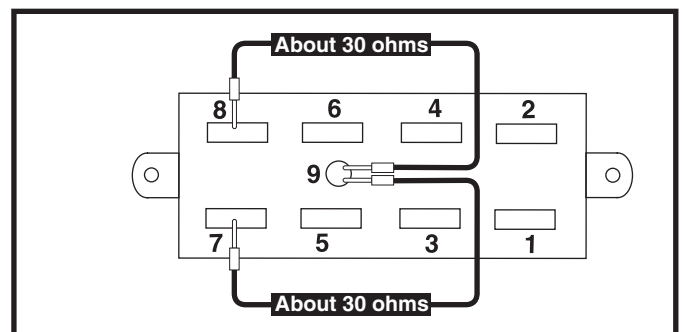


Figure 37. Connector 2a

- 1 VSI CONTROLLER
- 2 POWER INTERFACE HARNESS
- 3 CHARGER/INHIBIT HARNESS
- 4 BATTERY CHARGER
- 5 CHARGER POWER INTERFACE HARNESS
- 6 BACK BATTERY HARNESS
- 7 FRONT BATTERY HARNESS
- 8 LEFT MOTOR
- 9 RIGHT MOTOR

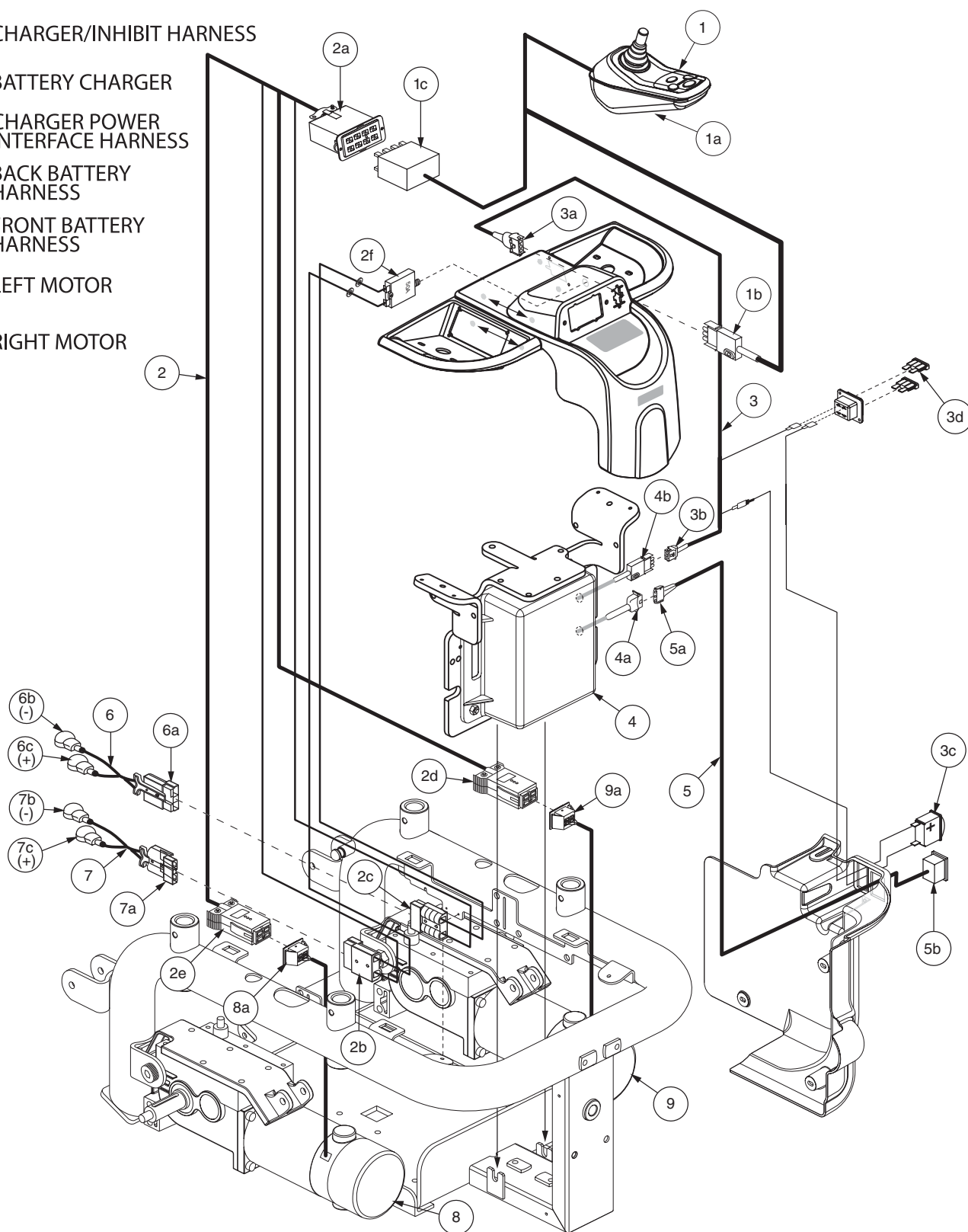


Diagram 2. Jazzy 1121 VSI Wiring Diagram - 3D