

5. Measure resistance across pin 3 and pin 4 on both connector 14b and connector 13b. **See figure 45.**
 - *If your multimeter does not indicate about 60 ohms for either test, then go to the next step*
 - *If your multimeter indicates about 60 ohms for both tests, then replace the power module (4) and retest the system.*
6. Unplug connector 8a from connector 13a and unplug 9a from connector 14a. **See diagram 2.**
7. Measure resistance across pin 3 (white) and pin 4 (white) on connector 8a. **See figure 45.**
 - *If your multimeter indicates 60 ohms, then replace the left motor interface harness (13) and retest the system.*
 - *If your multimeter did not indicate about 60 ohms, then replace the left brake assembly and retest the system.*
8. Measure resistance across pin 3 (white) and pin 4 (white) on connector 9a. **See figure 45.**
 - *If your multimeter indicates 60 ohms, then replace the right motor interface harness (14) and retest the system.*
 - *If your multimeter did not indicate about 60 ohms, then replace the right brake assembly and retest the system.*

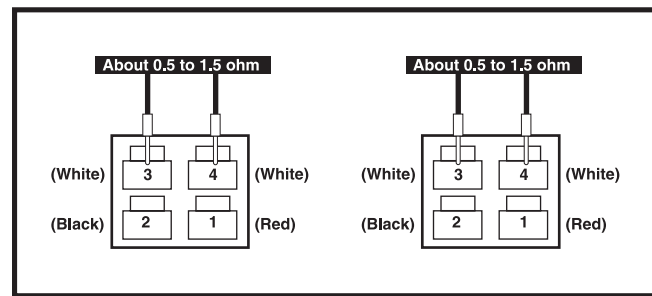


Figure 45. Connector 8a and 9a

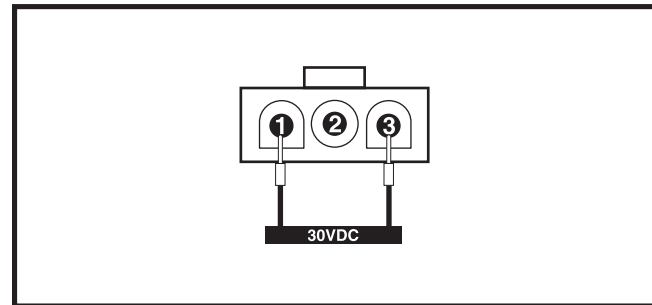


Figure 46. Connector 6a

Flash Code #10 - High Battery Voltage

Symptoms:

Battery condition meter LEDs flash ten times, then pause. This sequence is repeated until the fault is cleared.

Diagnosis:

The total battery voltage is over 32VDC. This only appears if the output of the charger is over 32VDC.

Solution:

Use the following procedure to find the source of the fault:

1. Remove the seat and the foot platform assembly. Refer to the power base owner's manual.
2. Remove the shroud. **See figure 13.**
3. Plug the onboard battery charger into an electrical outlet.
4. Unplug connector 7b from connector 6a. **See diagram 2.**
5. Measure voltage across pin 1 and pin 3 on connector 6a. **See figure 46.**
 - *If your multimeter indicates more than 30VDC, then replace the onboard battery charger (6) and retest the system.*

- | | | |
|--------------------------------------|-----------------------------|---|
| 1 JOYSTICK MODULE | 5 POWER INTERFACE HARNESS | 9 RIGHT MOTOR |
| 2 REDEL CABLE | 6 ONBOARD BATTERY CHARGER | 10 FRONT BATTERY HARNESS |
| 3 CHARGER/JOYSTICK INTERFACE HARNESS | 7 CHARGER INTERFACE HARNESS | 11 BACK BATTERY HARNESS |
| 4 POWER MODULE | 8 LEFT MOTOR | 12 CHARGER POWER CORD INTERFACE HARNESS |
| | | 13 LEFT MOTOR INTERFACE HARNESS |
| | | 14 RIGHT MOTOR INTERFACE HARNESS |

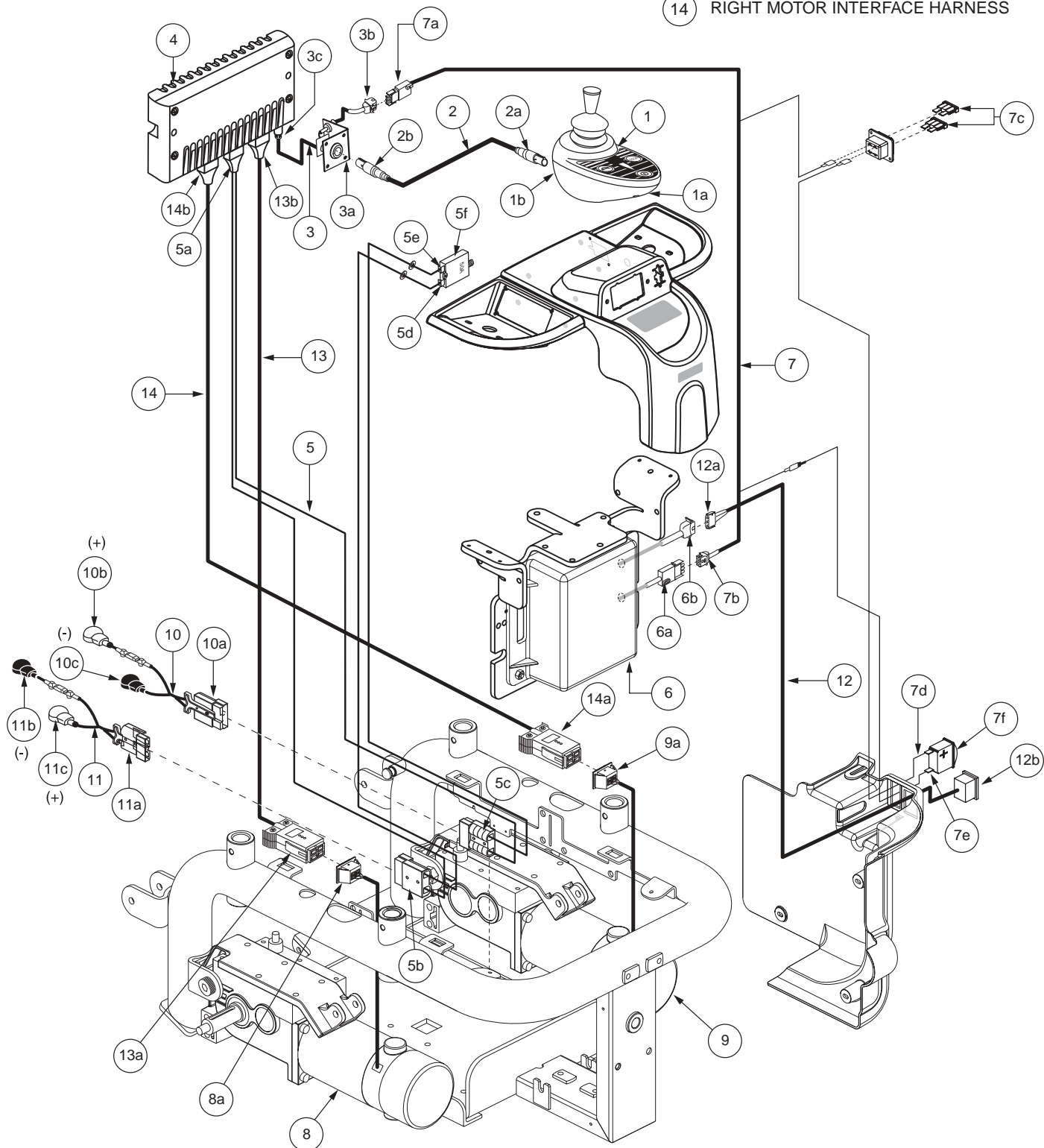


Diagram 2. Jazzy 1121 with Remote Plus Wiring Diagram 3D