

## Flash Code #7 - Possible Joystick Fault

### Symptoms:

There is a steady flash of seven battery condition meter LEDs (three red and four yellow).

### Diagnosis:

- The Remote Plus controller has a problem with the joystick (gimble).

*NOTE: If the joystick was out of the neutral (center) position when powered up, the battery condition meter will scroll up and down twice, then display seven flashing LEDs.*

*NOTE: If the speed/profile LEDs are flashing along with the seven battery condition meter LEDs, then there is a communications fault between the power module (4) and the joystick module (1). Check for physical damage to the red/cable (2) and replace as necessary.*

### Solution:

Use the following procedure:

1. Make sure there is no physical damage to the joystick.
2. Turn the Remote Plus off. Make sure the joystick is not being depressed in any direction.
3. Turn the Remote Plus back on.

## Flash Code #8 - Possible Controller Fault

### Symptoms:

There is a steady flash of eight battery condition meter LEDs (three red, four yellow, and one green).

### Diagnosis:

There are two things that could cause this:

- The power module (4) has a problem with its controller.
- There is a rare instance that if the battery voltage is 18 — 19VDC when the system is powered on, it will set flash code #8.

### Solution:

1. Replace the power module (4) and retest the system.
  - If this fault occurs again, then recharge the batteries and retest the system.
  - If this flash code occurs again, then call Tech Service.

## Flash Code #9 - Solenoid Brake Fault

### Symptoms:

There is a steady flash of nine battery condition meter LEDs (three red, four yellow, and two green.)

### Diagnosis:

There is an open on the motor brakes.

### Solution:

1. Remove the seat and the foot platform. Refer to the power base owner's manual.
2. Remove the shroud. **See figure 13.**
3. Unfasten the electronics tray from the frame. **See figure 14.**
4. Unplug connector 14b and connector 13b from the power module. **See diagram 2.**

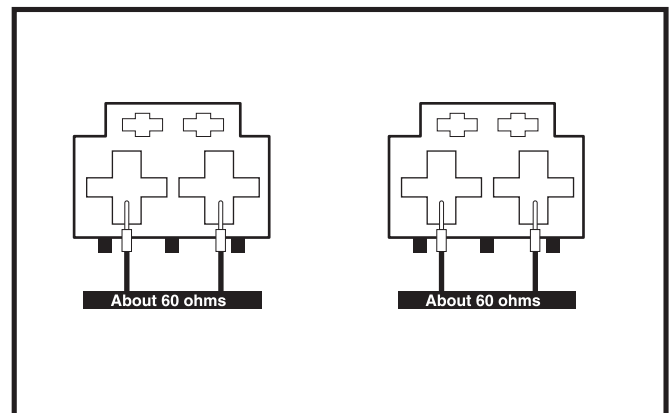
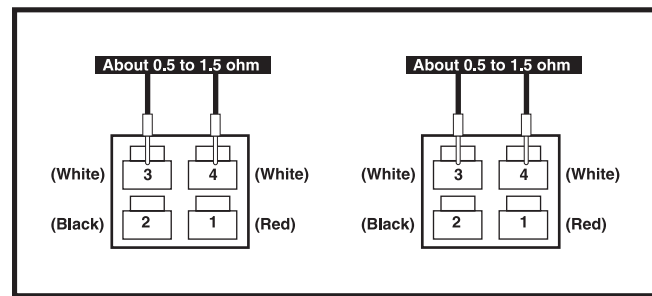
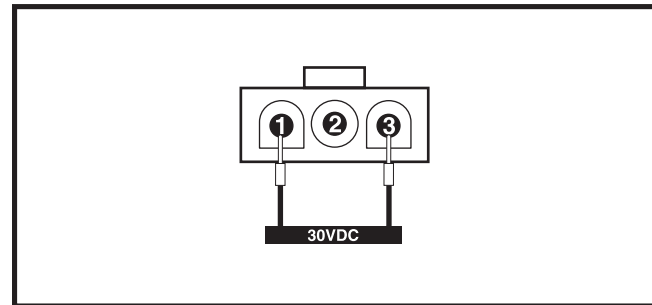


Figure 44. Connectors 13b and 14b

5. Measure resistance across pin 3 and pin 4 on both connector 14b and connector 13b. **See figure 45.**
  - *If your multimeter does not indicate about 60 ohms for either test, then go to the next step*
  - *If your multimeter indicates about 60 ohms for both tests, then replace the power module (4) and retest the system.*
6. Unplug connector 8a from connector 13a and unplug 9a from connector 14a. **See diagram 2.**
7. Measure resistance across pin 3 (white) and pin 4 (white) on connector 8a. **See figure 45.**
  - *If your multimeter indicates 60 ohms, then replace the left motor interface harness (13) and retest the system.*
  - *If your multimeter did not indicate about 60 ohms, then replace the left brake assembly and retest the system.*
8. Measure resistance across pin 3 (white) and pin 4 (white) on connector 9a. **See figure 45.**
  - *If your multimeter indicates 60 ohms, then replace the right motor interface harness (14) and retest the system.*
  - *If your multimeter did not indicate about 60 ohms, then replace the right brake assembly and retest the system.*



**Figure 45. Connector 8a and 9a**



**Figure 46. Connector 6a**

## Flash Code #10 - High Battery Voltage

### Symptoms:

Battery condition meter LEDs flash ten times, then pause. This sequence is repeated until the fault is cleared.

### Diagnosis:

The total battery voltage is over 32VDC. This only appears if the output of the charger is over 32VDC.

### Solution:

Use the following procedure to find the source of the fault:

1. Remove the seat and the foot platform assembly. Refer to the power base owner's manual.
2. Remove the shroud. **See figure 13.**
3. Plug the onboard battery charger into an electrical outlet.
4. Unplug connector 7b from connector 6a. **See diagram 2.**
5. Measure voltage across pin 1 and pin 3 on connector 6a. **See figure 46.**
  - *If your multimeter indicates more than 30VDC, then replace the onboard battery charger (6) and retest the system.*

- |                                      |                             |   |
|--------------------------------------|-----------------------------|---|
| 1 JOYSTICK MODULE                    | 5 POWER INTERFACE HARNESS   | 9 RIGHT MOTOR                           |
| 2 REDEL CABLE                        | 6 ONBOARD BATTERY CHARGER   | 10 FRONT BATTERY HARNESS                |
| 3 CHARGER/JOYSTICK INTERFACE HARNESS | 7 CHARGER INTERFACE HARNESS | 11 BACK BATTERY HARNESS                 |
| 4 POWER MODULE                       | 8 LEFT MOTOR                | 12 CHARGER POWER CORD INTERFACE HARNESS |
|                                      |                             | 13 LEFT MOTOR INTERFACE HARNESS         |
|                                      |                             | 14 RIGHT MOTOR INTERFACE HARNESS        |

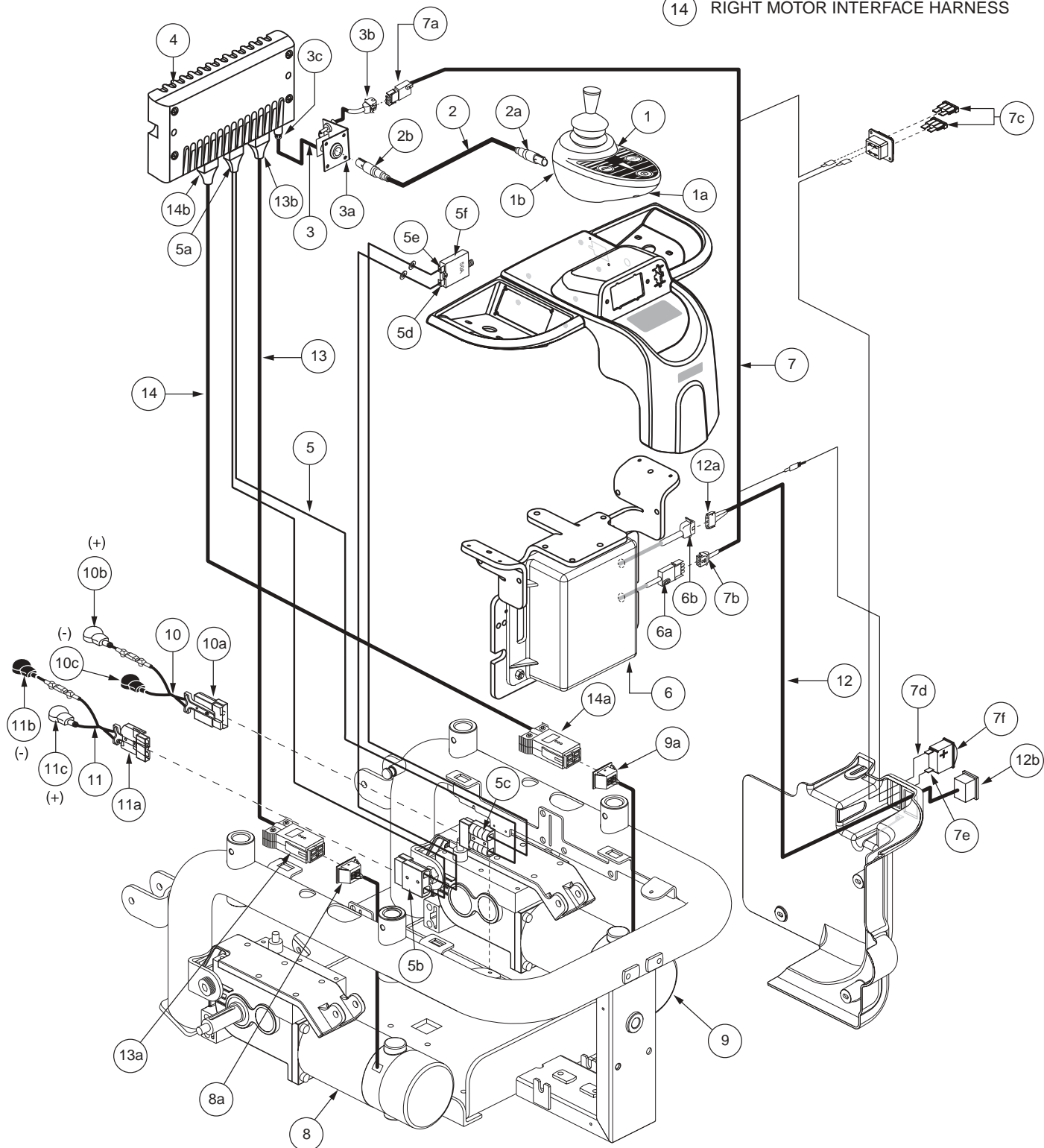


Diagram 2. Jazzy 1121 with Remote Plus Wiring Diagram 3D