

## Flash Code #5 - Right Motor Wiring Fault

### Symptoms:

There is a steady flash of five battery condition meter LEDs (three red and two yellow).

### Diagnosis:

There is a wiring fault between the right motor (9) and the brake.

### Solution:

Use the following procedure to find the source of the fault:

1. Unplug connector 14b from the power module (4). See **diagram 2**.
2. Measure resistance across pin 1 and pin 3 and across pin 1 and pin 4 on connector 14b. See **figure 42**.
  - If your multimeter indicates an open on both tests, then replace the power module (4) and retest the system.
  - If your multimeter does not indicate an open on both tests, then go to the next step.
3. Unplug connector 14a from connector 9a. See **diagram 2**.
4. Measure resistance across pin 1 (red) and pin 3 (white) and across pin 1 (red) and pin 4 (white) on connector 9a. See **figure 43**.
  - If your multimeter indicates an open on both tests, then replace the right motor interface harness (14) and retest the system.
  - If your multimeter does not indicate an open on both tests, then replace the right motor/brake assembly and retest the system.

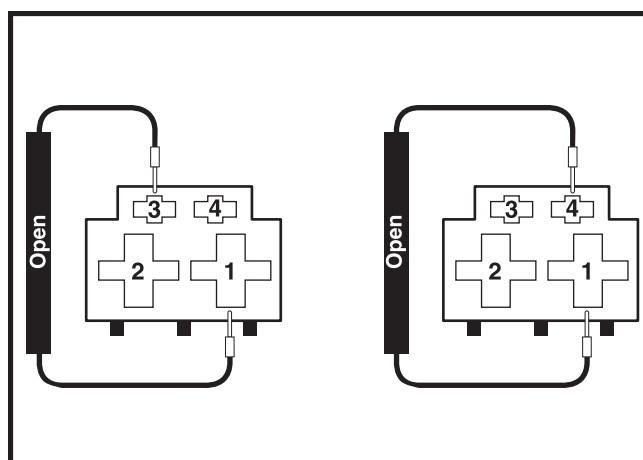


Figure 42. Connector 14b

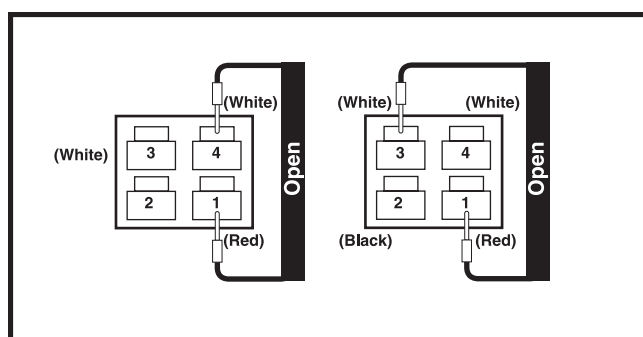


Figure 43. Connector 9a

## Flash Code #6 - Inhibit Active

### Symptoms:

There is a steady flash of six battery condition meter LEDs (three red and three yellow).

### Diagnosis:

- An off-board charger is connected to the off-board charger socket.
- There is a short between pin 2 and pin 3 on connector 1a.

### Solution:

If the Remote Plus controller indicates an inhibit active fault and there is no off-board charger plugged into connector 1a, then replace the Remote Plus joystick module (1) and retest the system.

- |                                      |                             |   |
|--------------------------------------|-----------------------------|---|
| 1 JOYSTICK MODULE                    | 5 POWER INTERFACE HARNESS   | 9 RIGHT MOTOR                           |
| 2 REDEL CABLE                        | 6 ONBOARD BATTERY CHARGER   | 10 FRONT BATTERY HARNESS                |
| 3 CHARGER/JOYSTICK INTERFACE HARNESS | 7 CHARGER INTERFACE HARNESS | 11 BACK BATTERY HARNESS                 |
| 4 POWER MODULE                       | 8 LEFT MOTOR                | 12 CHARGER POWER CORD INTERFACE HARNESS |
|                                      |                             | 13 LEFT MOTOR INTERFACE HARNESS         |
|                                      |                             | 14 RIGHT MOTOR INTERFACE HARNESS        |

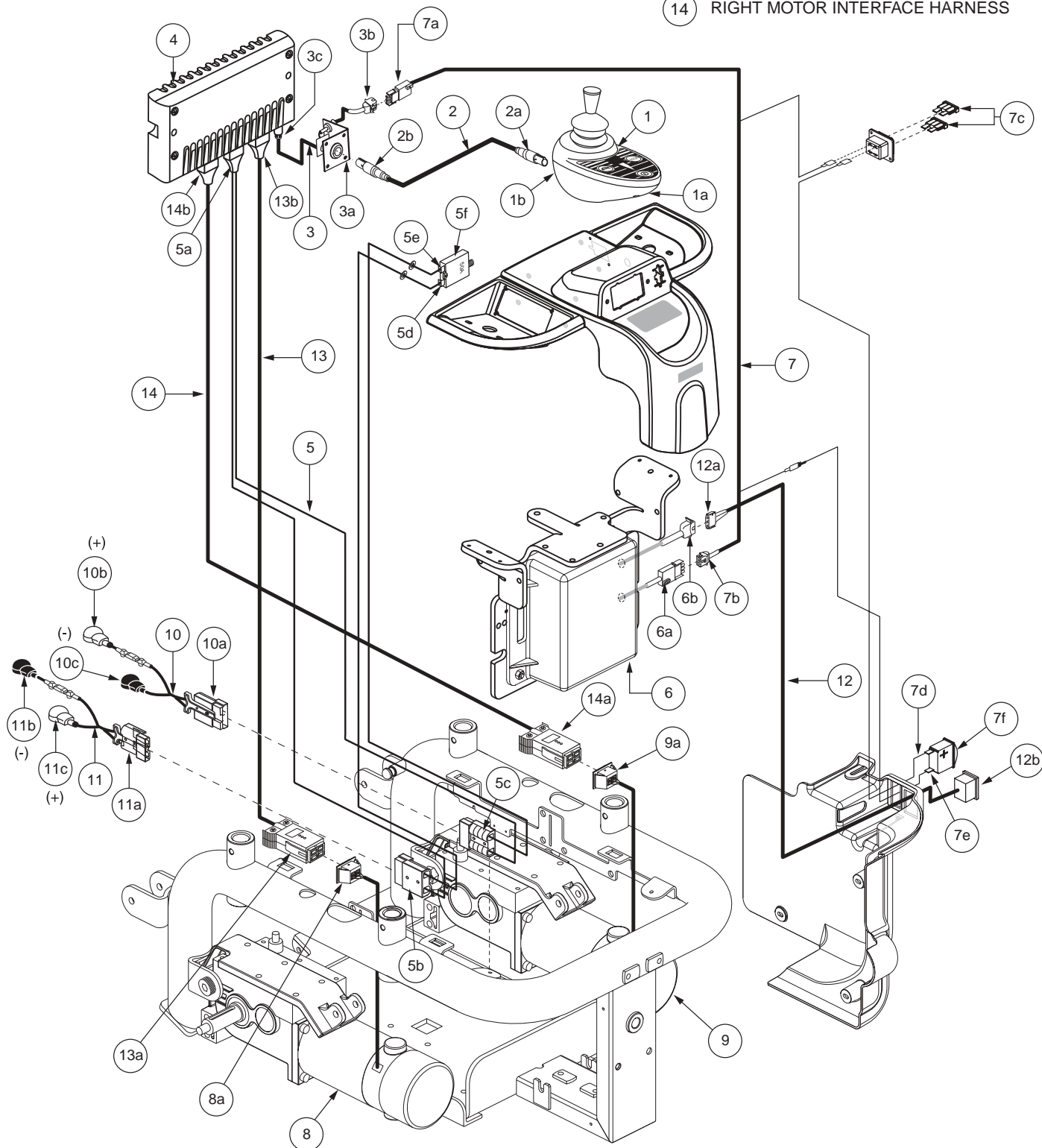


Diagram 2. Jazzy 1121 with Remote Plus Wiring Diagram 3D