

- |   |                                |   |                       |    |                 |
|---|--------------------------------|---|-----------------------|----|-----------------|
| 1 | REMOTE PLUS JOYSTICK           | 5 | BATTERY CABLE         | 9  | LEFT MOTOR      |
| 2 | POWER MODULE                   | 6 | FRONT BATTERY HARNESS | 10 | CIRCUIT BREAKER |
| 3 | REDEL CABLE                    | 7 | REAR BATTERY HARNESS  | 11 | RUN PLUG        |
| 4 | POWER TAKE-OFF/INHIBIT HARNESS | 8 | RIGHT MOTOR           | 12 | REDEL RUN PLUG  |

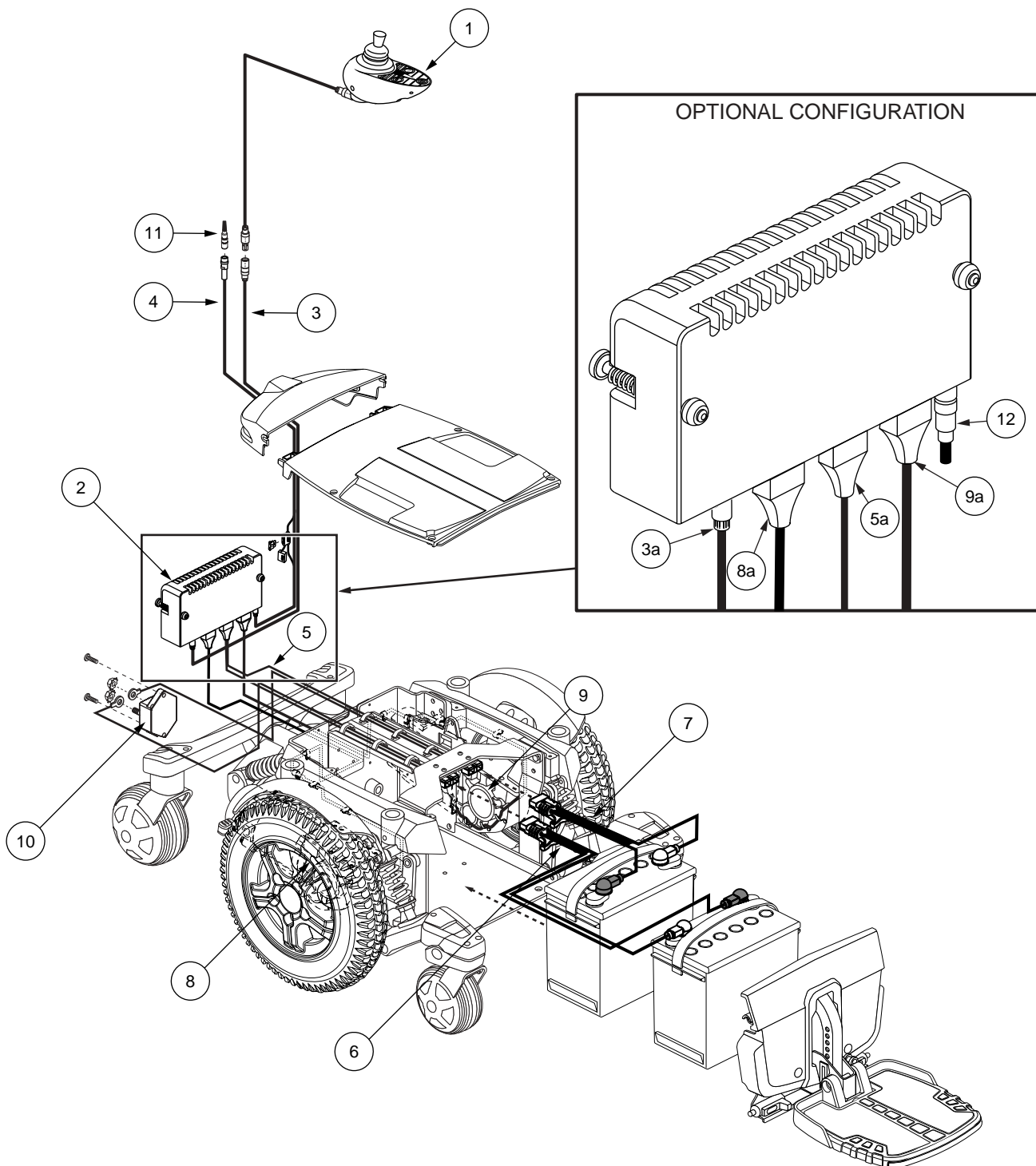


Diagram 1. Quantum 6000 Troubleshooting Key

15. Measure resistance from pin 1 on connector 3a to pin 1 on connector 3b. **See figure 12.**
  16. Measure resistance from pin 2 on connector 3a to pin 2 on connector 3b. **See figure 13.**
- *If your multimeter indicates less than 1 ohm for each test, then replace the Remote Plus joystick (1) and retest the system.*
  - *If your multimeter indicates an open for either test, then replace the Redel cable (3) and retest the system.*

## SECTION 2 - POWER IS ON, BUT POWER CHAIR WILL NOT DRIVE

### Symptoms:

- The battery condition meter LEDs light up.
- The power chair will not drive.
- The battery condition meter is not emitting any flash codes.

### Diagnosis:

There is an open in the inhibit circuit.

### Solution:

Use the following procedure to find the source of the problem:

1. Locate the power take-off/inhibit harness or Redel run plug. **See diagram 2.**
  - *If the unit is not equipped with a power positioning system or a power take-off/inhibit harness, then go to step 7.*
  - *If the unit has a power positioning system or a power take-off/inhibit harness, then go to the next step.*
2. Unplug connector 4a from the run plug or power positioning system. **See diagram 2.**
3. Place a jumper between pin 3 and pin 4 of connector 4a. **See figure 14.**
  - *If the unit drives and is not equipped with a power positioning system, then replace the run plug and retest system.*
  - *If the unit drives and is equipped with a power positioning system, then refer to the troubleshooting guide for that specific seating system.*
  - *If the unit does not drive, then go to the next step.*
4. Unplug connector 4b from connector 2e. **See diagram 3.**
5. Measure resistance from pin 3 on connector 4a to pin 2 on connector 4b. **See figure 15.**
  - *If your multimeter indicates less than 1 ohm, then go to the next step.*
  - *If your multimeter indicates an open, then replace the power take-off/inhibit harness (4) and retest the system.*
6. Measure resistance from pin 4 on connector 4a to pin 6 on connector 4b. **See figure 16.**
  - *If your multimeter indicates less than 1 ohm, then replace the power module (2) and retest the system.*
  - *If your multimeter indicates an open, then replace the power take-off/inhibit harness (4) and retest the system.*

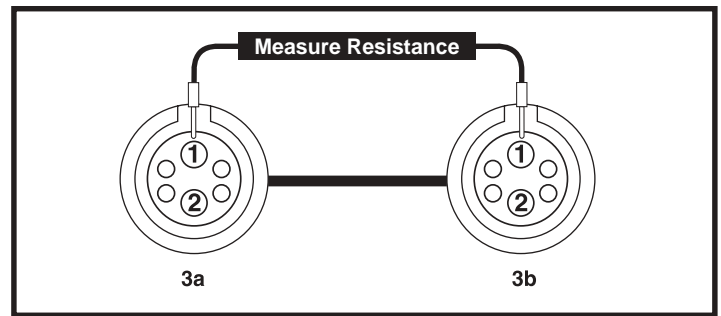


Figure 12. Connectors 3a and 3b

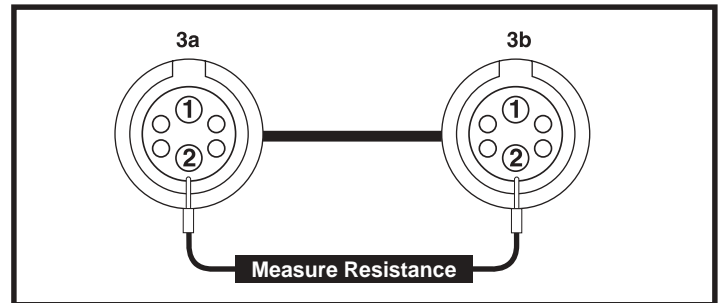


Figure 13. Connectors 3a and 3b

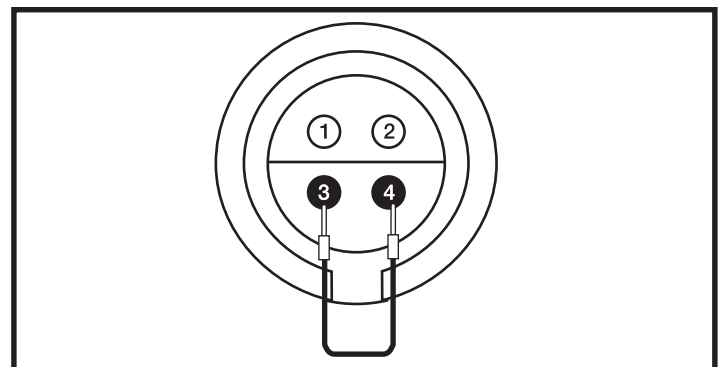


Figure 14. Connector 4a

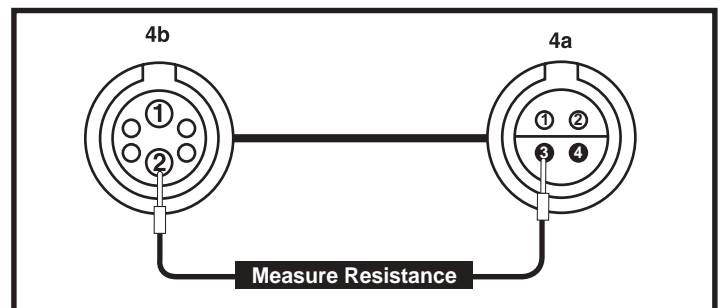


Figure 15. Connectors 4a and 4b

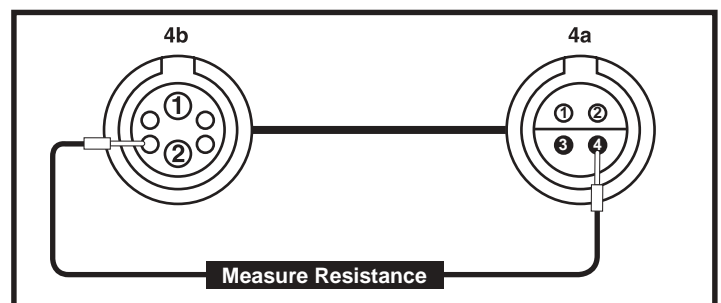


Figure 16. Connectors 4a and 4b