

- |                                      |                             |   |
|--------------------------------------|-----------------------------|---|
| 1 JOYSTICK MODULE                    | 5 POWER INTERFACE HARNESS   | 9 RIGHT MOTOR                           |
| 2 REDEL CABLE                        | 6 ONBOARD BATTERY CHARGER   | 10 FRONT BATTERY HARNESS                |
| 3 CHARGER/JOYSTICK INTERFACE HARNESS | 7 CHARGER INTERFACE HARNESS | 11 BACK BATTERY HARNESS                 |
| 4 POWER MODULE                       | 8 LEFT MOTOR                | 12 CHARGER POWER CORD INTERFACE HARNESS |
|                                      |                             | 13 LEFT MOTOR INTERFACE HARNESS         |
|                                      |                             | 14 RIGHT MOTOR INTERFACE HARNESS        |

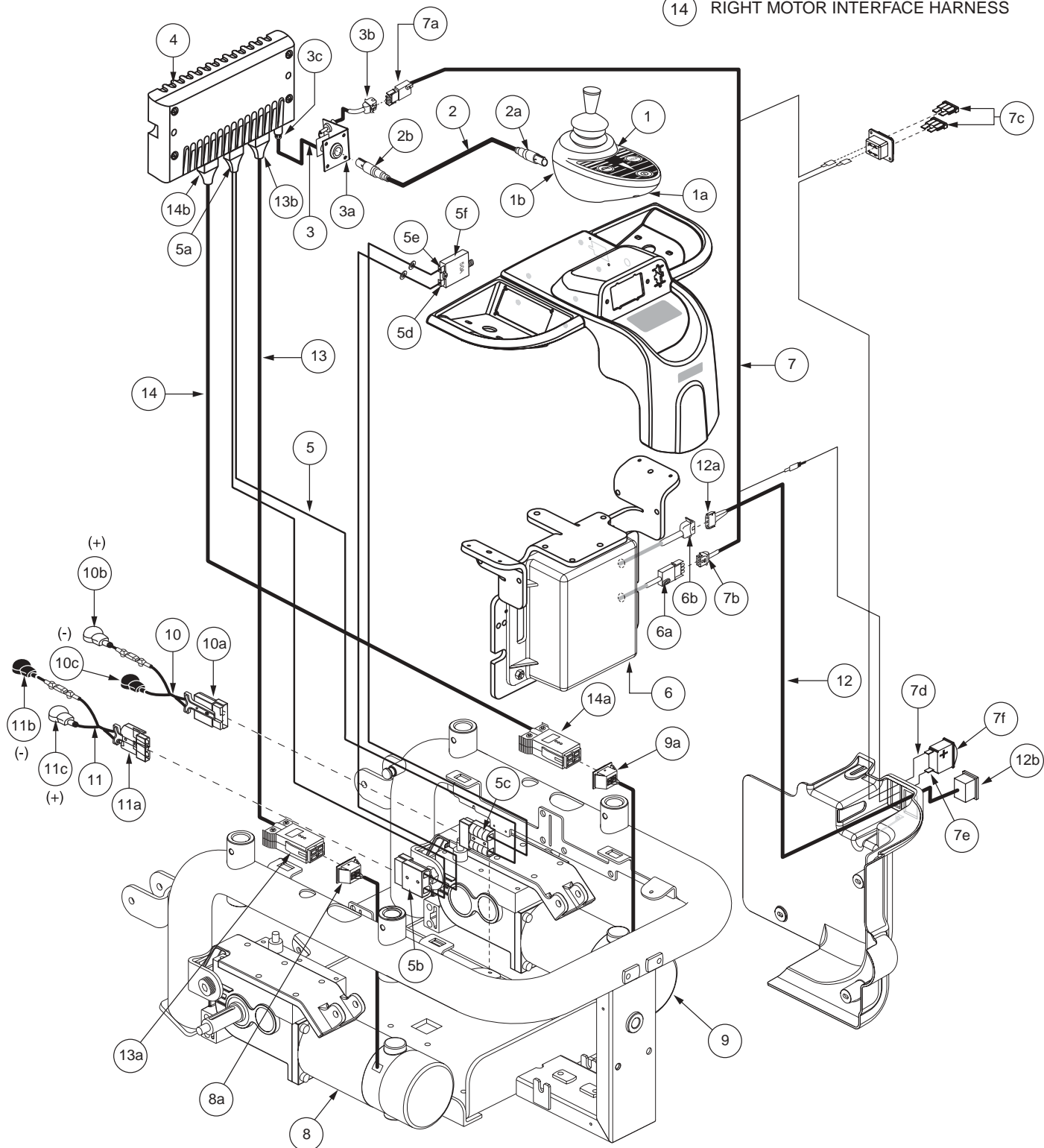


Diagram 2. Jazzy 1121 with Remote Plus Wiring Diagram 3D