

- | | | | | | |
|---|--------------------------------|---|-----------------------|----|-----------------|
| 1 | REMOTE PLUS JOYSTICK | 5 | BATTERY CABLE | 9 | LEFT MOTOR |
| 2 | POWER MODULE | 6 | FRONT BATTERY HARNESS | 10 | CIRCUIT BREAKER |
| 3 | REDEL CABLE | 7 | REAR BATTERY HARNESS | 11 | RUN PLUG |
| 4 | POWER TAKE-OFF/INHIBIT HARNESS | 8 | RIGHT MOTOR | 12 | REDEL RUN PLUG |

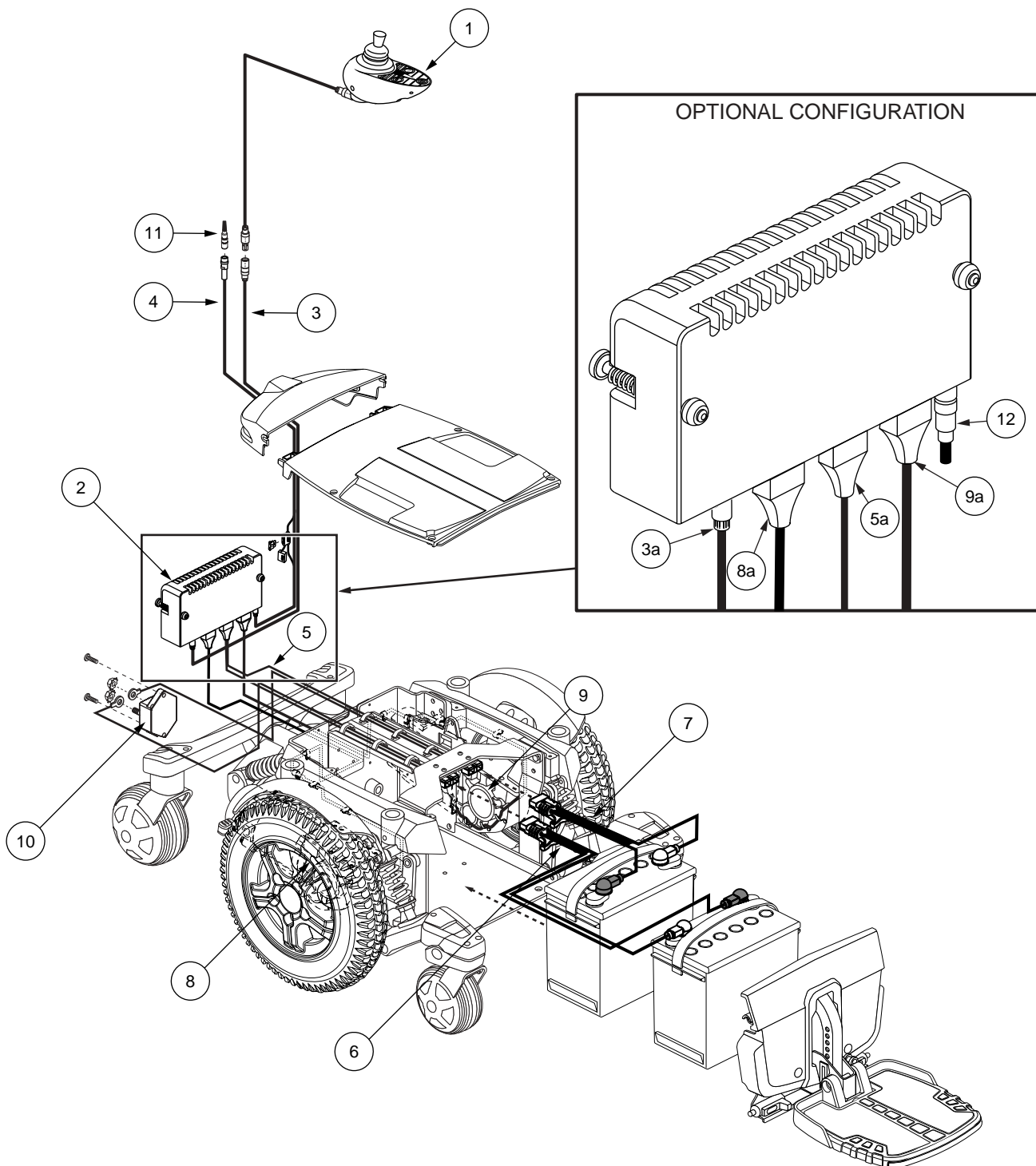


Diagram 1. Quantum 6000 Troubleshooting Key