

- |                           |                                   |
|---------------------------|-----------------------------------|
| ① VSI CONTROLLER          | ⑥ BATTERY CHARGER                 |
| ② POWER INTERFACE HARNESS | ⑦ CHARGER POWER INTERFACE HARNESS |
| ③ CIRCUIT BREAKER HARNESS | ⑧ RIGHT MOTOR                     |
| ④ AMMETER                 | ⑨ LEFT MOTOR                      |
| ⑤ CHARGER INHIBIT HARNESS |                                   |

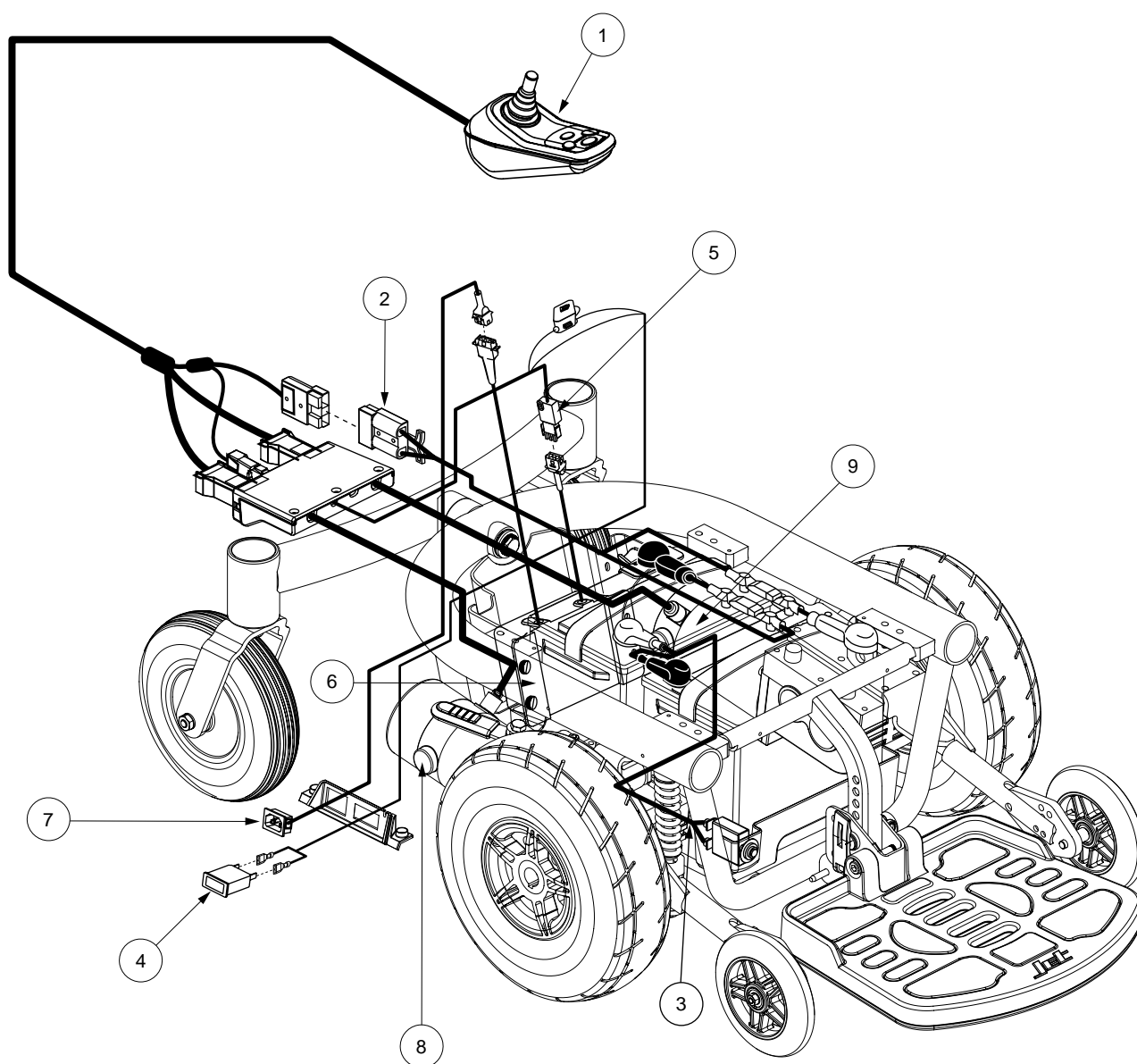


Diagram 1. Jet 3/10 Ultra Troubleshooting Key

## Flash Code #6 - Inhibit Active

### Symptoms:

Battery Condition Meter LEDs Ripple Left-to-Right

### Diagnosis:

- An off-board charger is connected to the off-board charger socket (1a).
- There is a short between pin 2 and pin 3 of connector 1a.

### Solution:

— *If the VSI controller indicates an inhibit active fault and there is no off-board charger plugged into connector 1a, then replace the VSI controller (1) and retest the system.*

## Flash Code #7 - Possible Joystick Fault

### Symptoms:

Seven Battery Condition Meter LEDs Flashing

### Diagnosis:

- The VSI controller (1) has a problem with the joystick (gimble).
- The joystick was out of the neutral (center) position when powered up. The battery condition meter LEDs will ripple side-to-side twice, then display seven flashing LED's.

**NOTE:** *If the battery condition meter is showing seven flashing LEDs, make sure there is no physical damage to the joystick keeping it from returning to the neutral (center) position.*

### Solution:

Use the following procedure to correct the fault:

1. Turn the VSI off. Make sure the joystick is not being depressed in any directions.
  2. Turn the VSI back on.
- *If the VSI still displays this fault, replace the VSI controller (1) and retest the system.*

## Flash Code #8 - Possible Controller Fault

### Symptoms:

Eight Battery Condition Meter LEDs Flashing

### Diagnosis:

This is an indication that there is a problem with the VSI controller.

— *If this fault occurs, replace the VSI controller (1) and retest the system.*