

- | | |
|---------------------------|-----------------------------------|
| ① VSI CONTROLLER | ⑥ BATTERY CHARGER |
| ② POWER INTERFACE HARNESS | ⑦ CHARGER POWER INTERFACE HARNESS |
| ③ CIRCUIT BREAKER HARNESS | ⑧ RIGHT MOTOR |
| ④ AMMETER | ⑨ LEFT MOTOR |
| ⑤ CHARGER INHIBIT HARNESS | |

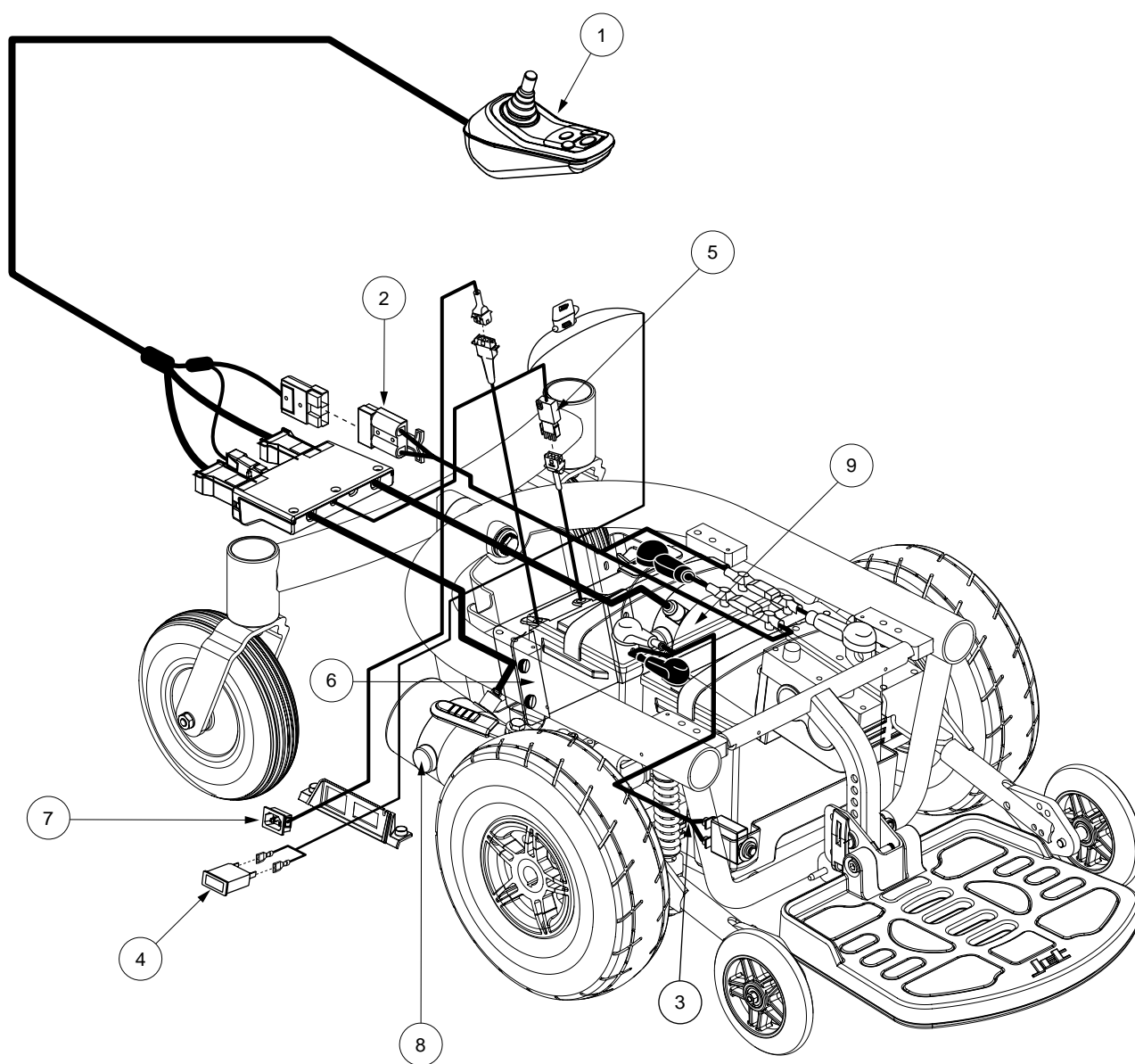


Diagram 1. Jet 3/10 Ultra Troubleshooting Key

Flash Code #4 - Right Motor Disconnected

Symptoms:

Four Battery Condition Meter LEDs Flashing

Diagnosis:

There is a communication problem between the right motor (8) and the VSI controller (1).

Solution:

Use the following procedure to find the source of the fault:

1. Unplug connector 1e from connector 8a. **See diagram 3.**
2. Measure resistance across pin 1 (red) and pin 2 (black) of connector 8a. **See figure 24.**
 - If your multimeter indicates an open, then go to the next step.
 - If your multimeter indicates about 0.5 - 1.5 ohms, then replace the VSI controller (1) and retest the system.
3. Remove the seat and the trapeze bars. Refer to power base owner's manual.
4. Remove the front shroud and foot platform assembly.
5. Remove the center and rear shrouds. **See figure 12.**
6. Remove the main shroud. **See figure 12.**
7. Remove the brushes from the right motor (8) and inspect them. **See figure 25.**
 - If the brushes are worn below 0.25 in. or they are physically damaged, then replace the brushes and retest the system.
 - If the brushes are not worn below 0.25 in. or they are not damaged, then replace the right motor (8) and retest the system.

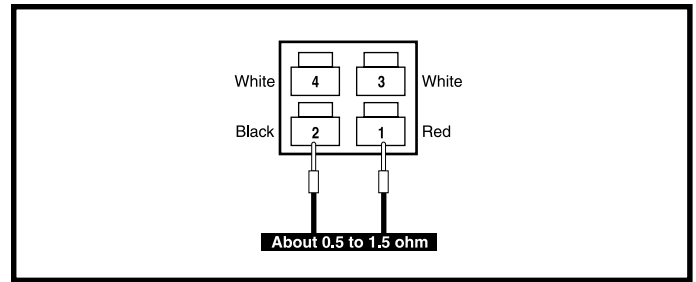


Figure 24. Connector 8a

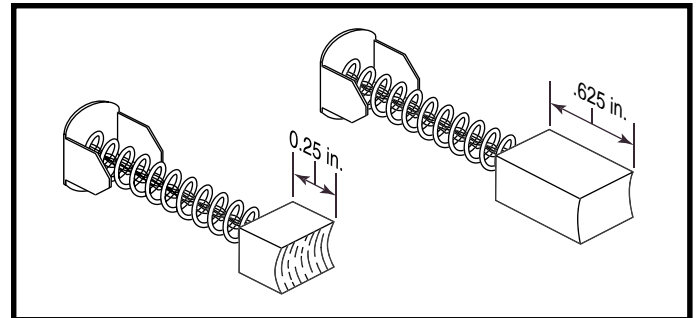


Figure 25. Motor Brushes

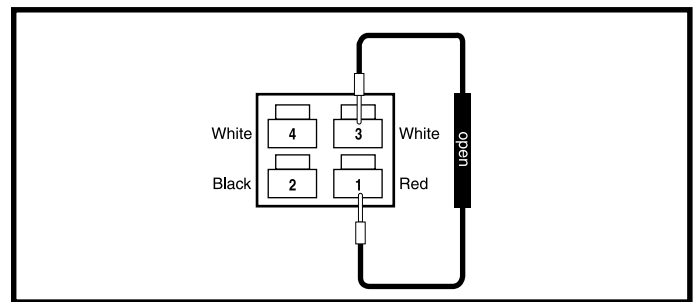


Figure 26. Connector 8a - Pins 1 and 3

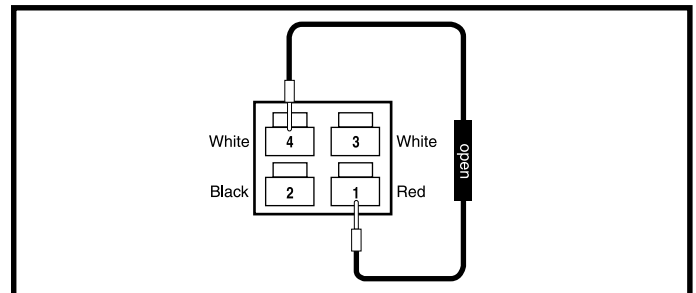


Figure 27. Connector 8a - Pins 1 and 4

Flash Code #5 - Right Motor Wiring Fault

Symptoms:

Five Battery Condition Meter LEDs Flashing

Diagnosis:

There is a wiring fault between the right motor (8) and brake.

Solution:

Use the following procedure to find the source of the fault:

1. Unplug connector 1e from connector 8a. **See diagram 3.**
2. Measure resistance across pin 1 (red) and pin 3 (white) and across pin 1 (red) and pin 4 (white) on connector 8a. **See figures 26 and 27.**
 - If your multimeter indicates an open on both tests, then replace the VSI controller (1) and retest the system.
 - If your multimeter does not indicate an open on both tests, then replace the right motor (8) and retest the system.