

- | | |
|---------------------------|-----------------------------------|
| ① VSI CONTROLLER | ⑥ BATTERY CHARGER |
| ② POWER INTERFACE HARNESS | ⑦ CHARGER POWER INTERFACE HARNESS |
| ③ CIRCUIT BREAKER HARNESS | ⑧ RIGHT MOTOR |
| ④ AMMETER | ⑨ LEFT MOTOR |
| ⑤ CHARGER INHIBIT HARNESS | |

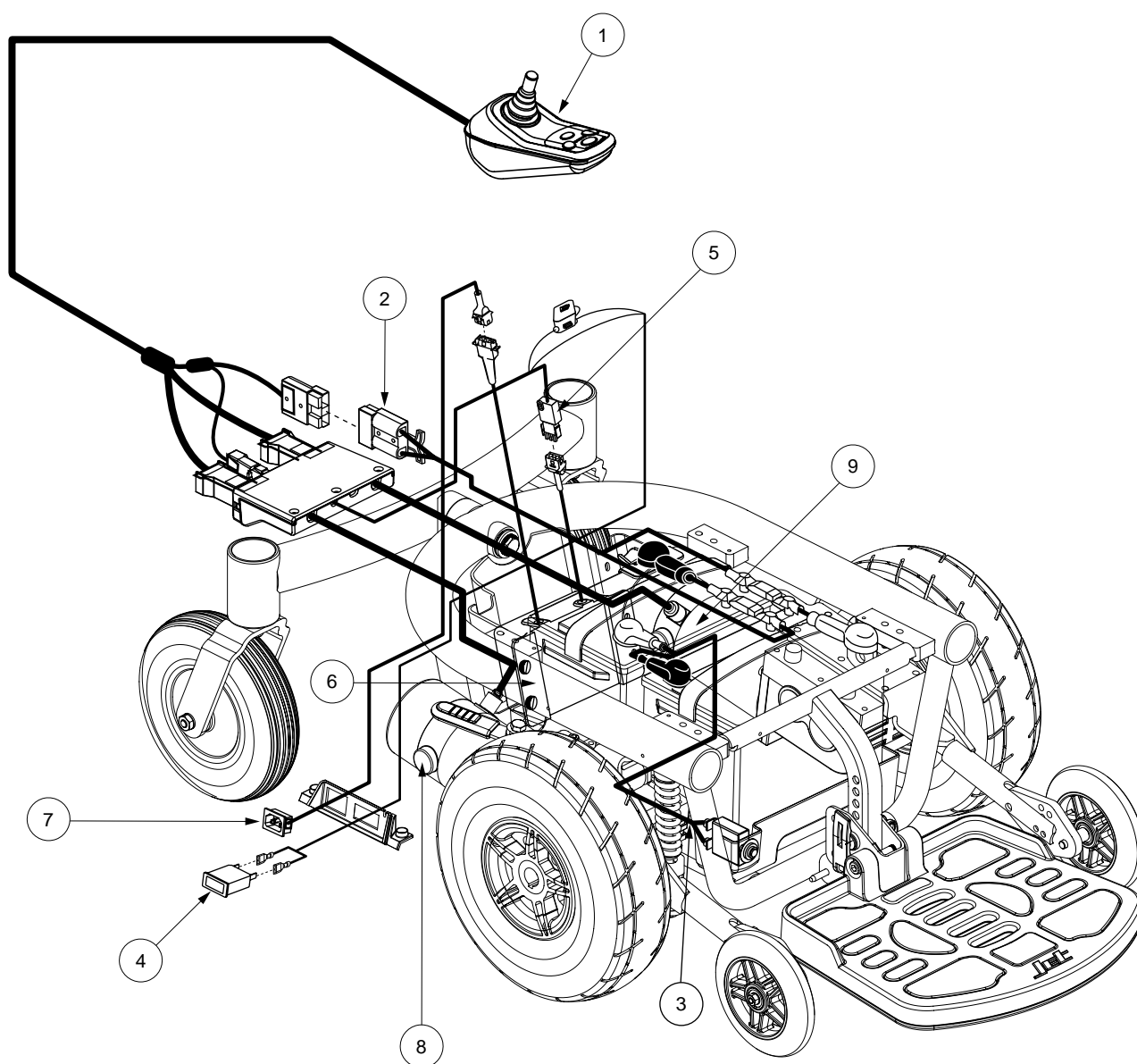


Diagram 1. Jet 3/10 Ultra Troubleshooting Key

Flash Code #2 - Left Motor Disconnected

Symptoms:

Two Battery Condition Meter LEDs Flashing

Diagnosis:

There is a communication problem between the left motor (9) and the VSI controller (1).

Solution:

Use the following procedure to find the source of the fault:

1. Unplug connector 1d from connector 9a. **See diagram 3.**
2. Measure resistance across pin 1 (red) and pin 2 (black) on connector 9a. **See figure 20.**
 - If your multimeter indicates an open, then go to the next step.
 - If your multimeter indicates about 0.5 - 1.5 ohms, then replace the VSI controller (1) and retest the system.
3. Remove the seat and the trapeze bars. Refer to the power base owner's manual.
4. Remove the front shroud and foot platform assembly.
5. Remove the center and rear shrouds. **See figure 12.**
6. Remove the main shroud. **See figure 12.**
7. Remove the motor brushes from the left motor (9) and inspect them.
 - If the brushes are worn below 0.25 in. or they are physically damaged, then replace the brushes and retest the system. **See figure 21.**
 - If the brushes are not worn below 0.25 in. or they are not damaged, then replace the left motor (9) and retest the system.

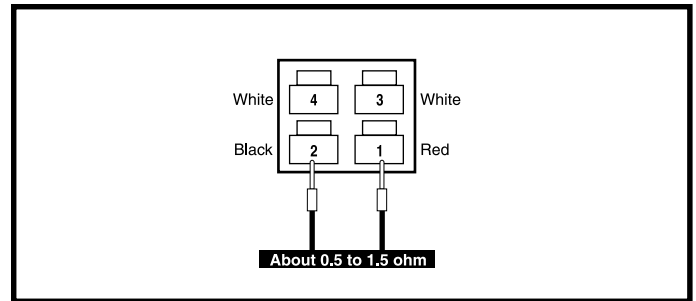


Figure 20. Connector 9a

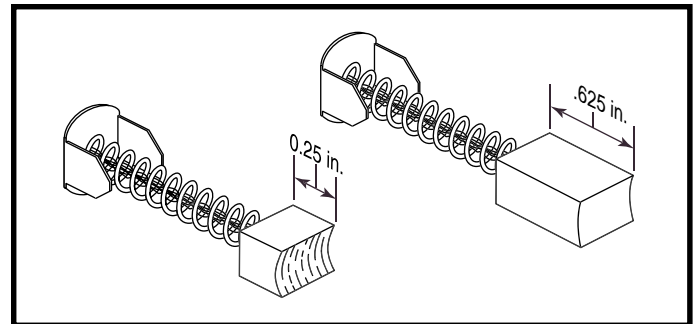


Figure 21. Motor Brushes

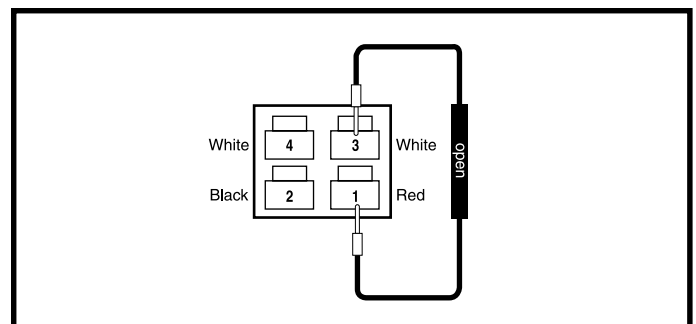


Figure 22. Connector 9a - Pins 1 and 3

Flash Code #3 - Left Motor Wiring Fault

Symptoms:

Three Battery Condition Meter LEDs Flashing

Diagnosis:

There is a wiring fault between the left motor (9) and brake.

Solution:

Use the following procedure to find the source of the fault:

1. Unplug connector 1d from connector 9a. **See diagram 3.**
2. Measure resistance across pin 1 (red) and pin 3 (white) and across pin 1 (red) and pin 4 (white) on connector 9a. **See figures 22 and 23.**
 - If your multimeter indicates an open on both tests, then replace the VSI controller (1) and retest the system.
 - If your multimeter does not indicate an open on both tests, then replace the left motor (9) and retest the system.

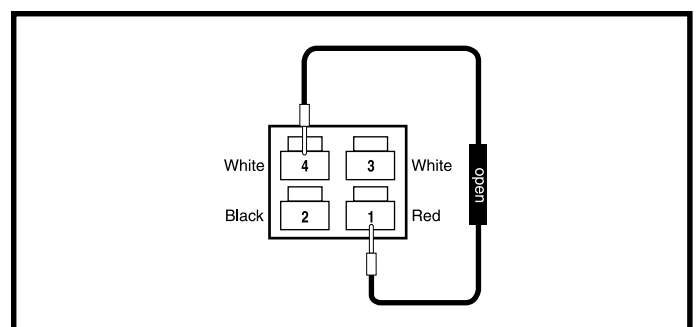


Figure 23. Connector 9a - Pins 1 and 4