

- | | |
|---------------------------|-----------------------------------|
| ① VSI CONTROLLER | ⑥ BATTERY CHARGER |
| ② POWER INTERFACE HARNESS | ⑦ CHARGER POWER INTERFACE HARNESS |
| ③ CIRCUIT BREAKER HARNESS | ⑧ RIGHT MOTOR |
| ④ AMMETER | ⑨ LEFT MOTOR |
| ⑤ CHARGER INHIBIT HARNESS | |

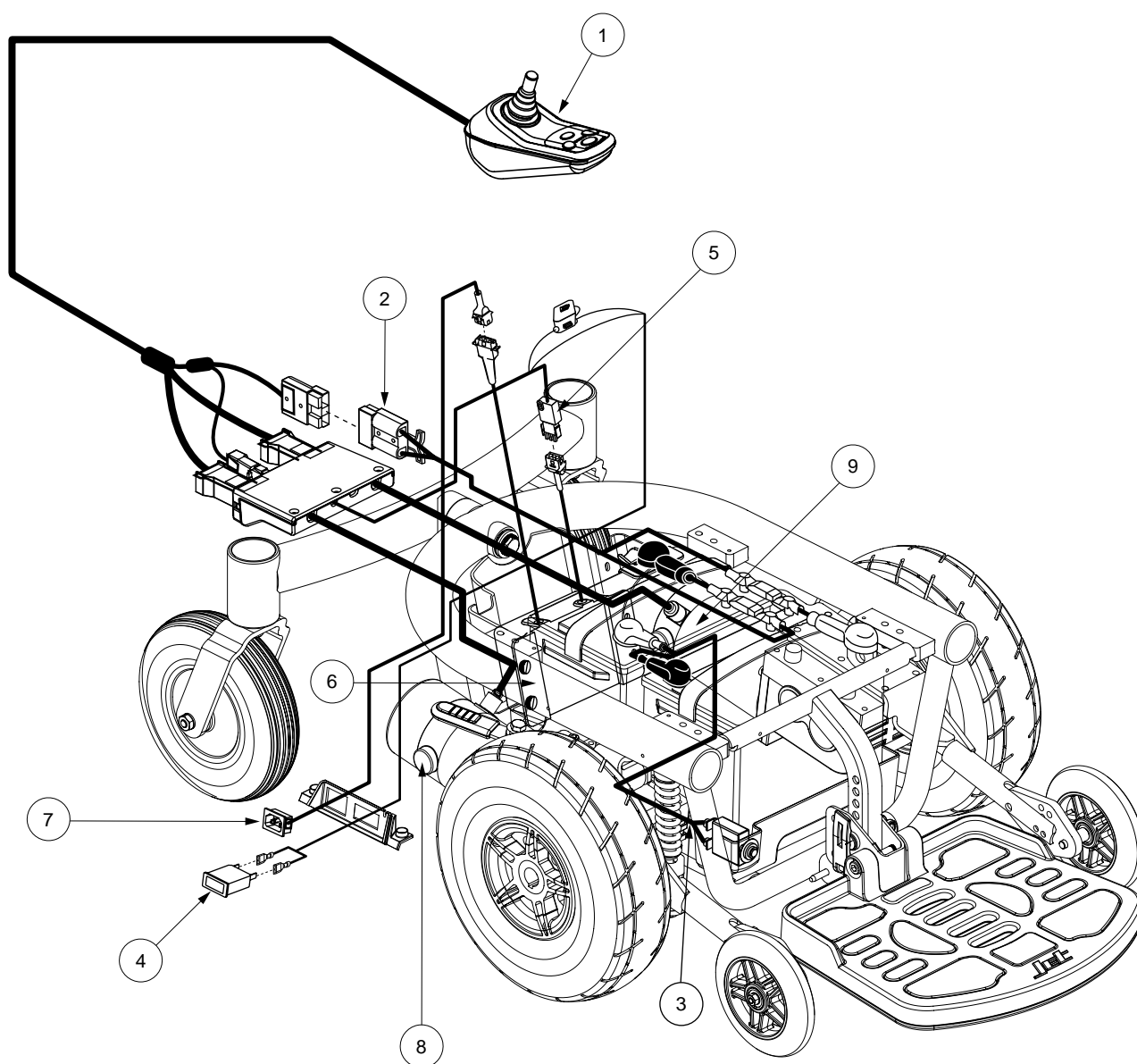


Diagram 1. Jet 3/10 Ultra Troubleshooting Key

SECTION 1 - NO POWER

Symptoms:

- The batteries are fully charged.
- All electrical components are connected correctly.
- The on/off key is pressed and the power does not come on.

Diagnosis:

The power has been interrupted somewhere in the system.

Solution:

Use the following procedure to find the source of the interruption:

NOTE: The circuit breaker harness (3) connects the circuit breaker directly to the batteries. See diagram 1. If this harness is NOT WIRED FROM THE POSITIVE TERMINAL OF ONE BATTERY TO THE NEGATIVE TERMINAL OF THE OTHER BATTERY, the power chair will not power up AND the circuit breaker will trip. Make sure the circuit breaker is not tripped.

1. Measure voltage across pin 1 (B+) and pin 2 (B-) on the off-board charging socket (connector 1a). **See figure 2.**
 - If your multimeter indicates 0VDC, then go to the next step.
 - If your multimeter indicates about 25VDC, then replace the VSI controller (1) and retest the system.
 - If your multimeter indicates 0VDC — 18VDC, then recharge the batteries and retest the system.
2. Remove the seat and the trapeze bars. Refer to the power base owner's manual.
3. Remove the front shroud and foot platform assembly.
4. Remove the center and rear shrouds. **See figure 3.**
5. Unplug connector 1b from connector 2a. **See diagram 2.**
6. Measure voltage across pin 1 and pin 2 on connector 2a. **See figure 4.**
 - If your multimeter indicates 0VDC, then go to the next step.
 - If your multimeter indicates about 25VDC, then replace the VSI controller (1) and retest the system.
 - If your multimeter indicates 0VDC — 18VDC, then replace the VSI controller (1), recharge the batteries, and retest the system.
7. Remove the main shroud. **See figure 3.**
8. Measure voltage across connector 2b and connector 2c. **See diagram 2.**
 - If your multimeter indicates 0VDC, then go to the next step.
 - If your multimeter indicates about 25VDC, then replace the power interface harness (2) and retest the system.
 - If your multimeter indicates 0VDC — 18VDC, then replace the power interface harness (2), recharge the batteries, and retest the system.

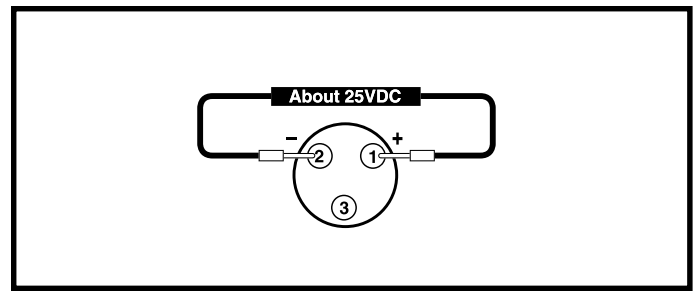


Figure 2. Connector 1a

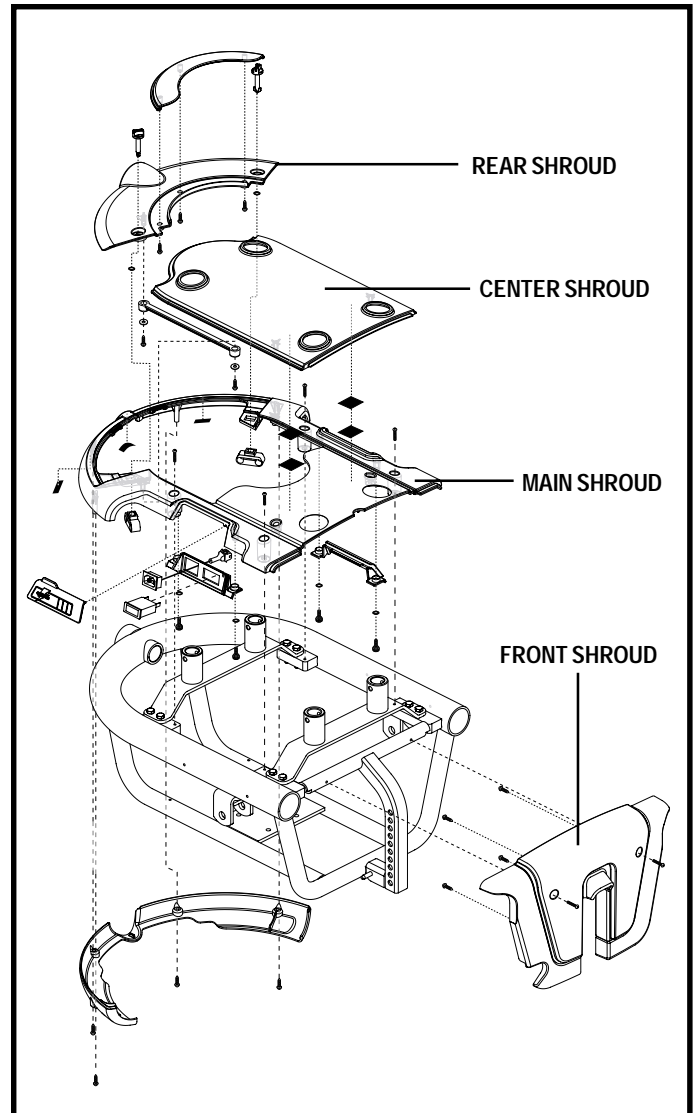


Figure 3. Jet 3/10 Ultra Shroud Assembly

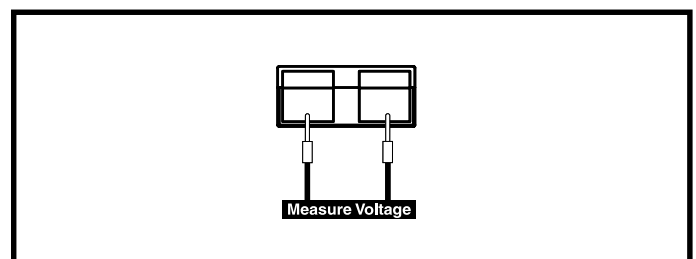


Figure 4. Connector 2a



WARNING! Battery posts, terminals, and related accessories contain lead and lead compounds. Wash hands after handling.



MANDATORY! RED (+) cables must be connected to positive (+) battery terminals/posts. BLACK (-) cables must be connected to negative (-) battery terminals/posts. Failure to connect the battery cables and harnesses in the proper manner may result in personal injury and/or damage to the power chair. REPLACE cables immediately if damaged.

9. Measure resistance across connector 3b and connector 3c.

See diagram 4.

- If your multimeter indicates less than 1 ohm, then try to recharge the batteries and retest the system.
- If your multimeter indicates more than 1 ohm, then go to the next step.

10. Measure resistance across pin 1 and pin 2 of the circuit breaker (3a). **See figure 5.**

- If your multimeter indicates less than 1 ohm, then replace the circuit breaker harness (3) and retest the system.
- If your multimeter indicates more than 1 ohm, then replace the circuit breaker (3a) and retest the system.

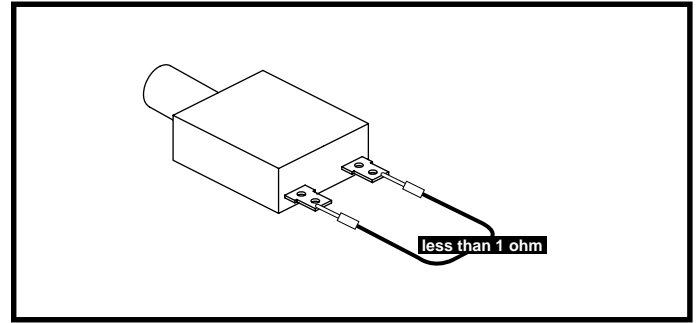


Figure 5. Circuit Breaker (3a)