

Flash Code #8 - Over Voltage Fault

Symptom:

The System Status LED flashes eight times and pauses. This sequence is repeated until the fault is cleared.

Diagnosis:

- The total battery voltage exceeds 32VDC.
- The batteries were overcharged because the wrong battery charger was used.

Solution:

Use the following procedure to clear the fault:

1. Remove the seat and the foot platform assembly. Refer to the power base owner's manual.
2. Remove the shroud. **See figure 33.**
3. Plug the onboard battery charger (6) into an electrical outlet.
4. Unplug connector 7b from connector 6a. **See diagram 2.**
5. Measure voltage across pin 1 and pin 3 on connector 6a. **See figure 45.**
 - *If your multimeter indicates more than 30VDC, then replace the onboard battery charger (6) and retest the system.*

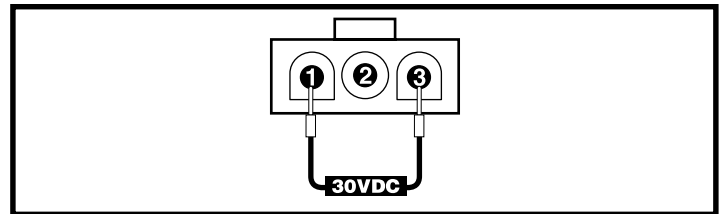


Figure 45. Connector 6a

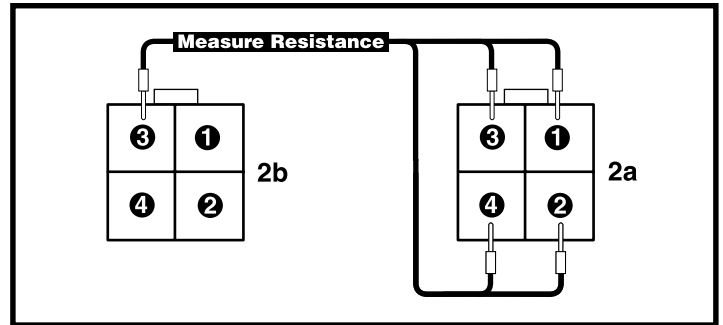


Figure 46. Connectors 2b and 2a

Flash Code #9 - CANL Fault

Symptom:

The System Status LED flashes nine times and pauses. This sequence is repeated until the fault is cleared.

Diagnosis:

There is an invalid voltage reading on the communications low wire (pin 3) on the DX bus cable (2).

Solution:

Use the following procedure to test the DX bus cable:

1. Unplug connector 2b from connector 3a and unplug connector 2a from connector 1b. **See diagram 2.**
2. Measure resistance across pin 3 on connector 2b and pin 1, pin 2, pin 3, and pin 4 on connector 2a. **See figure 46.**
 - *If your multimeter indicates less than 1 ohm on more than one measurement, then replace the DX bus cable (2).*
 - *If your multimeter indicates more than 1 ohm on any of the measurements, then replace the DX bus cable (2).*
 - *If your multimeter indicates less than 1 ohm on one and only one measurement, then replace the joystick module (1) and retest the system.*

- | | | |
|--------------------------------------|-----------------------------|---|
| 1 JOYSTICK MODULE | 5 POWER INTERFACE HARNESS | 9 RIGHT MOTOR |
| 2 DX BUS CABLE | 6 ONBOARD BATTERY CHARGER | 10 FRONT BATTERY HARNESS |
| 3 CHARGER/JOYSTICK INTERFACE HARNESS | 7 CHARGER INTERFACE HARNESS | 11 REAR BATTERY HARNESS |
| 4 POWER MODULE | 8 LEFT MOTOR | 12 CHARGER POWER CORD INTERFACE HARNESS |
| | | 13 LEFT MOTOR INTERFACE HARNESS |
| | | 14 RIGHT MOTOR INTERFACE HARNESS |

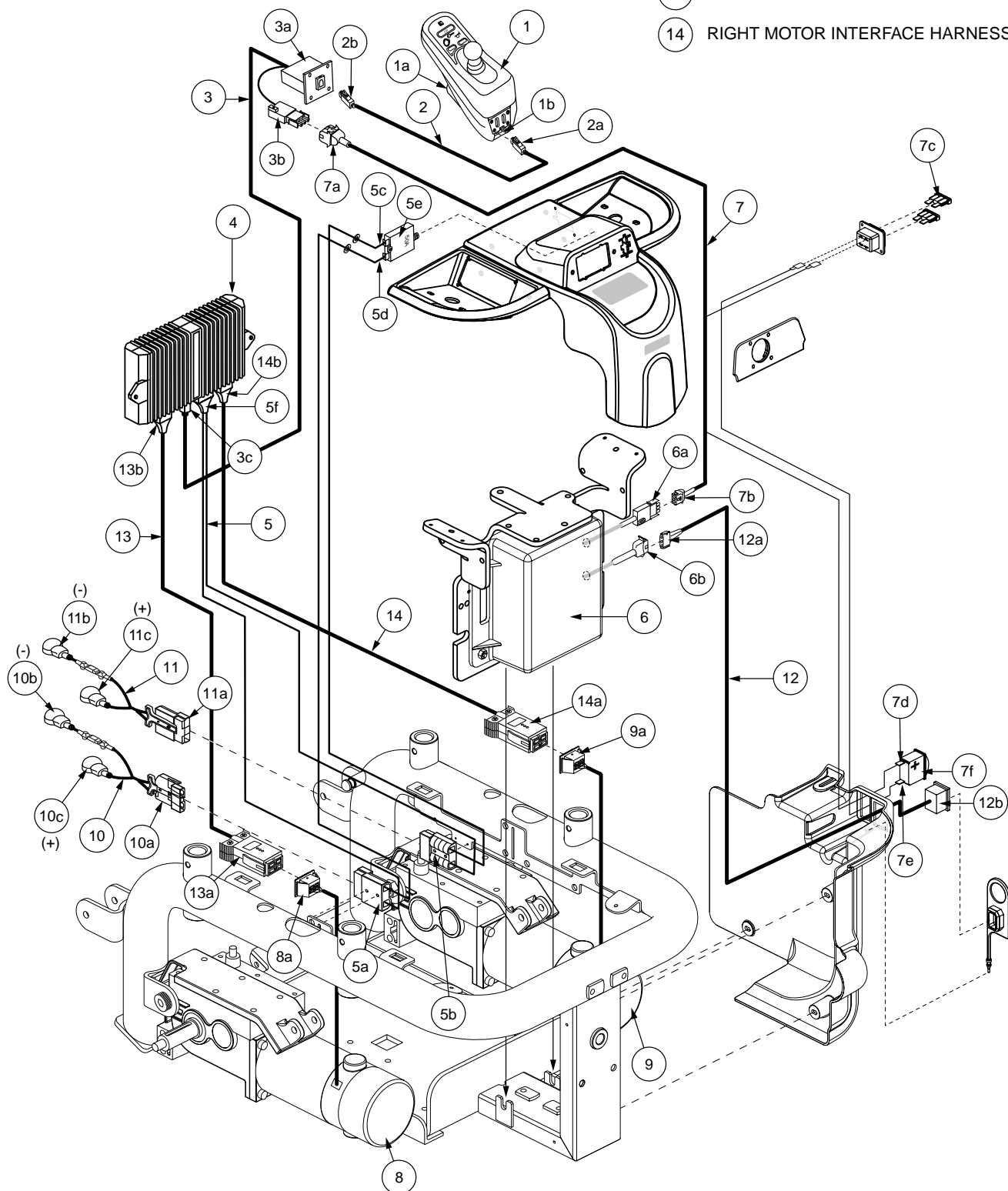


Diagram 2. Jazzy 1121 Europa Wiring Diagram - 3D