

Flash Code #3 - Left Motor (or connection) Fault

Symptom:

The System Status LED flashes three times and pauses. This sequence is repeated until the fault is cleared.

Diagnosis:

There is a fault with the left motor or a left motor connection.

Solution:

Use the following procedure to find the source of the fault:

1. Remove the seat and foot platform. Refer to the power base owner's manual.
2. Remove the shroud. **See figure 11.**
3. Unfasten the electronics tray from the frame. **See figure 12.**
4. Unplug connector 13b from the power module (4). **See diagram 2.**
5. Measure resistance across pin 1 and pin 2 of connector 13b. **See figure 22.**
 - If your multimeter indicates an open, then go to the next step.
 - If your multimeter indicates about 0.5 — 1.5 ohms, then replace the power module (4) and retest the system.
6. Unplug connector 13a from connector 8a.
7. Measure resistance across pin 1 (red) and pin 2 (black) on connector 8a. **See figure 23.**
 - If your multimeter indicates an open, then go to the next step.
 - If your multimeter indicates about 0.5 — 1.5 ohms, then replace the left motor interface harness (13) and retest the system.
8. Remove the motor brushes from the left motor and inspect them. **See figure 24.**
 - If the motor brushes are worn below 0.25 in. or are physically damaged, then replace the motor brushes and retest the system.
 - If the motor brushes are not worn below 0.25 in. or are not physically damaged, then replace the left motor (8) and retest the system.

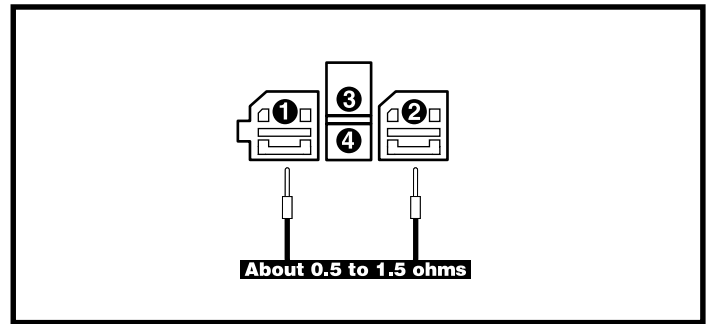


Figure 22. Connector 13b

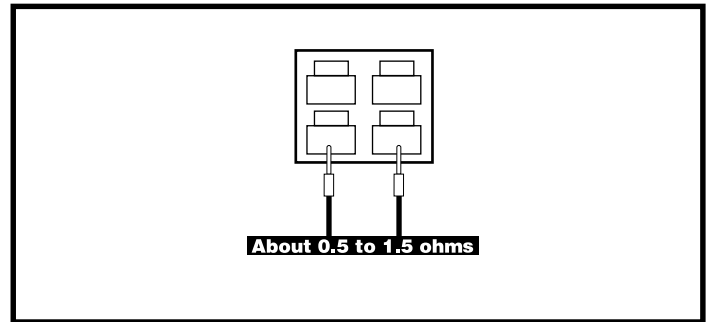


Figure 23. Connector 8a

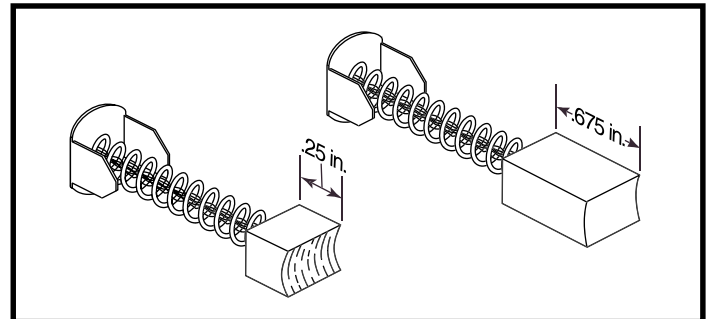


Figure 24. Motor Brushes

Flash Code #4 - Right Motor (or connection) Fault

Symptom:

The System Status LED flashes four times and pauses. This sequence is repeated until the fault is cleared.

Diagnosis:

There is a fault with the right motor or a right motor connection

Solution:

Use the following procedure to find the source of the fault:

1. Remove the seat and foot platform. Refer to the power base owner's manual.
2. Remove the shroud. **See figure 11.**

3. Unfasten the electronics tray from the frame. **See figure 12.**
4. Unplug connector 14b from the power module (4). **See diagram 2.**
5. Measure resistance across pin 1 and pin 2 of connector 14b. **See figure 25.**
 - *If your multimeter indicates an open, then go to the next step.*
 - *If your multimeter indicates about 0.5 — 1.5 ohms, then replace the power module (4) and retest the system.*
6. Unplug connector 14a from connector 9a. **See diagram 2.**
7. Measure resistance across pin 1 (red) and pin 2 (black) on connector 9a. **See figure 26.**
 - *If your multimeter indicates an open, then go to the next step.*
 - *If your multimeter indicates about 0.5 — 1.5 ohms, then replace the right motor interface harness (14) and retest the system.*
8. Remove the brushes from the right motor (9) and inspect them. **See figure 27.**
 - *If the motor brushes are worn below 0.25 in. or are physically damaged, then replace the motor brushes and retest the system.*
 - *If the motor brushes are not worn below 0.25 in. or are not physically damaged, then replace the right motor (9) and retest the system.*

Flash Code #5 - Left Park Brake (or connection) Fault

Symptom:

The System Status LED flashes five times and pauses. This sequence is repeated until the fault is cleared.

Diagnosis:

There is a fault with the left motor brake or the left motor brake connection.

Solution:

Use the following procedure to find the source of the fault:

1. Remove the seat and foot platform. Refer to the power base owner's manual.
2. Remove the shroud. **See figure 11.**
3. Unfasten the electronics tray from the frame. **See figure 12.**
4. Unplug connector 13b from the power module (4). **See diagram 2.**
5. Measure resistance across pin 3 and pin 4 on connector 13b. **See figure 28.**
 - *If your multimeter indicates an open, then go to the next step.*
 - *If your multimeter indicates about 60 ohms, then replace the power module (4) and retest the system.*

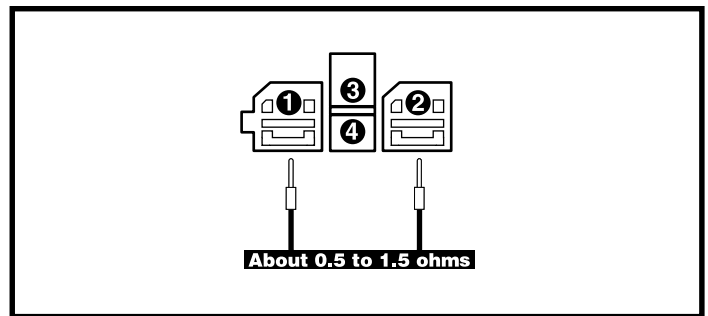


Figure 25. Connector 14b

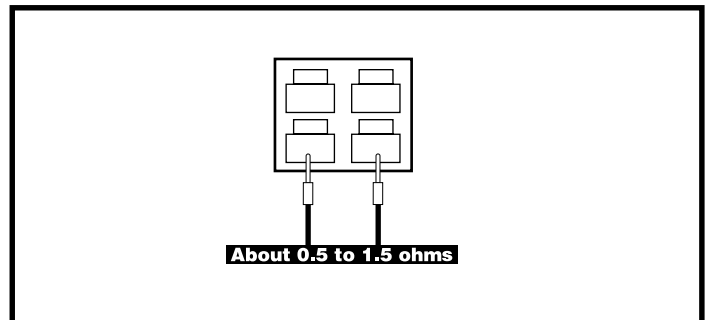


Figure 26. Connector 9a

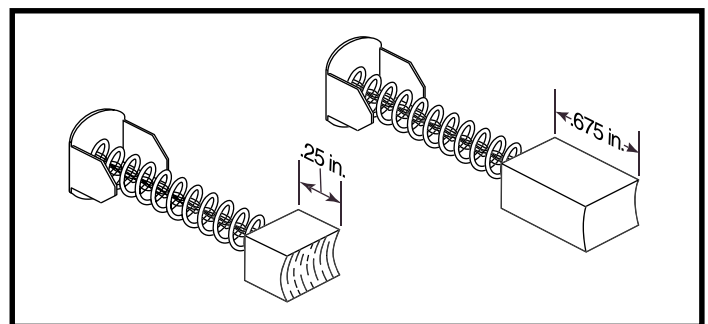


Figure 27. Motor Brushes

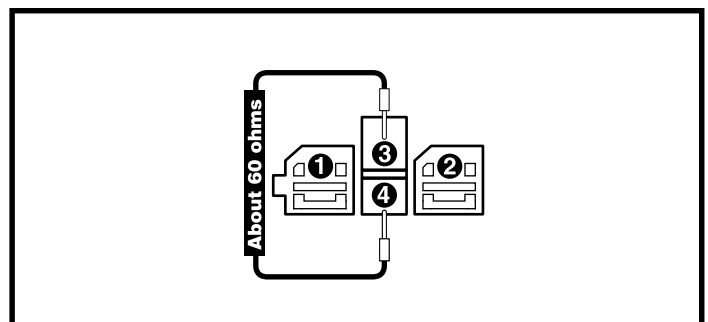


Figure 28. Connector 13b

- | | | |
|--------------------------------------|-----------------------------|---|
| 1 JOYSTICK MODULE | 5 POWER INTERFACE HARNESS | 9 RIGHT MOTOR |
| 2 DX BUS CABLE | 6 ONBOARD BATTERY CHARGER | 10 FRONT BATTERY HARNESS |
| 3 CHARGER/JOYSTICK INTERFACE HARNESS | 7 CHARGER INTERFACE HARNESS | 11 REAR BATTERY HARNESS |
| 4 POWER MODULE | 8 LEFT MOTOR | 12 CHARGER POWER CORD INTERFACE HARNESS |
| | | 13 LEFT MOTOR INTERFACE HARNESS |
| | | 14 RIGHT MOTOR INTERFACE HARNESS |

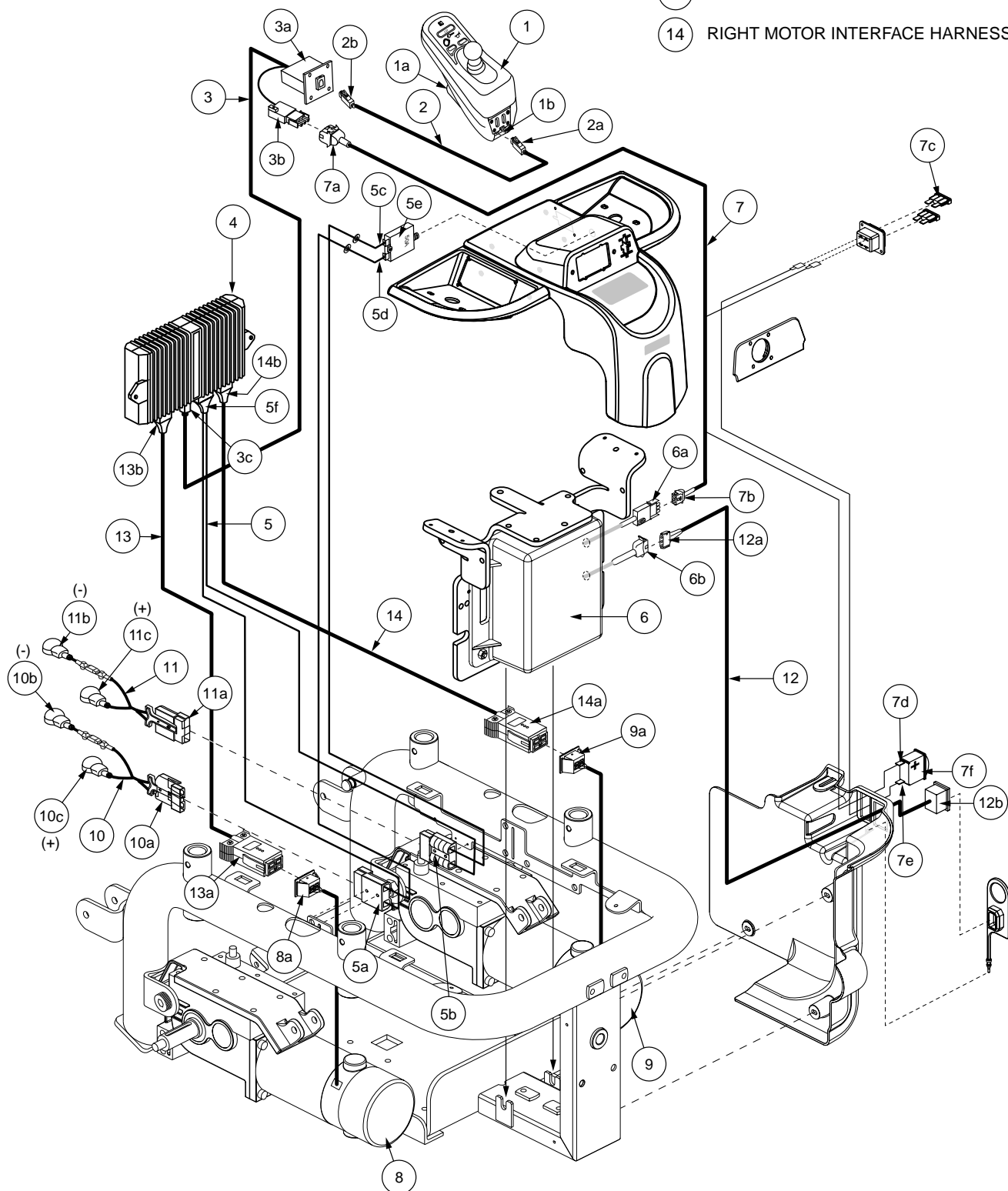


Diagram 2. Jazzy 1121 Europa Wiring Diagram - 3D