

This could put the power chair into a dangerous condition. The Dynamic system will automatically detect when a power module swap has occurred, and then the joystick module reprograms the new power module with the data from the old module.

Solution:

Use the following procedure:

1. Turn the power off, then back on again.
 - *If the fault still occurs*, then there may be a mismatch with the program. **Refer to “Flash Code #12 - Module Mismatch.”**

There may also be a problem with the DX bus cable (2) or an internal fault in the power module (4) or joystick module (1). Go to the next step.

2. Check the DX bus connection for any damage.
 - *If the DX bus cable is not damaged*, look for a status light on the power module. **See figure 20.**
 - *If the status light is flashing on the power module (4)*, then replace the power module (4) and retest the system.

Flash Code #2 - DX Accessory Fault

Symptom:

The System Status LED flashes two times and pauses. This sequence is repeated until the fault is cleared.

Diagnosis:

There is an error in the Combined Lighting/Actuator Module (CLAM) connected to the Dynamic system. The CLAM has a status LED that indicates errors.

Solution:

Use the following procedure to find the source of the fault:

1. Check the status LED on the CLAM. **See figure 21.**
 - *If this LED is flashing*, then replace the CLAM.
2. The CLAM harness has two lines that need jumpers, slow stop #1 and slow stop #2. Check to make sure that the jumpers are present on both lines.
 - *If a jumper is not on both of the lines*, then replace the jumpers and retest the system.
 - *If a jumper is present on both lines*, then replace the CLAM accessory harness and retest the system.

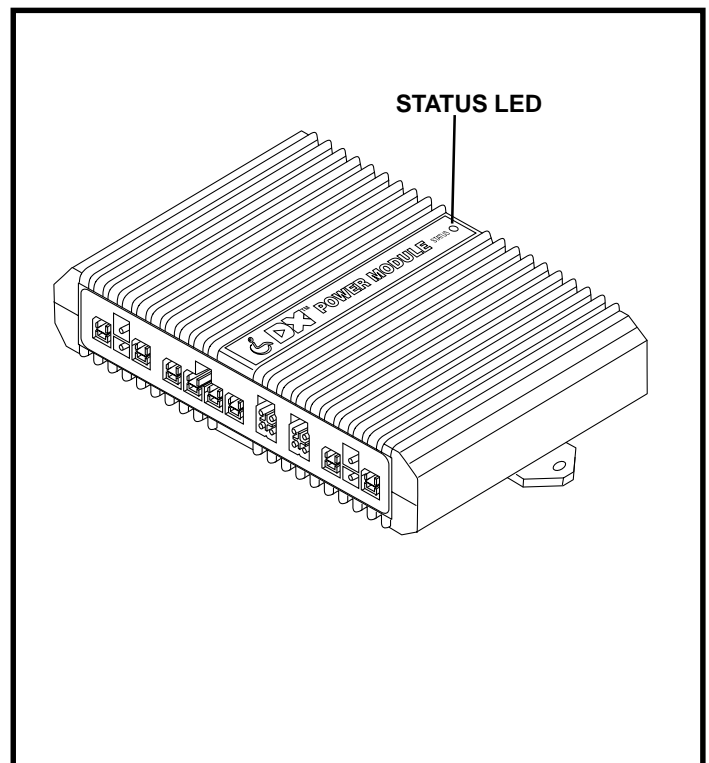


Figure 20. Dynamic Power Module

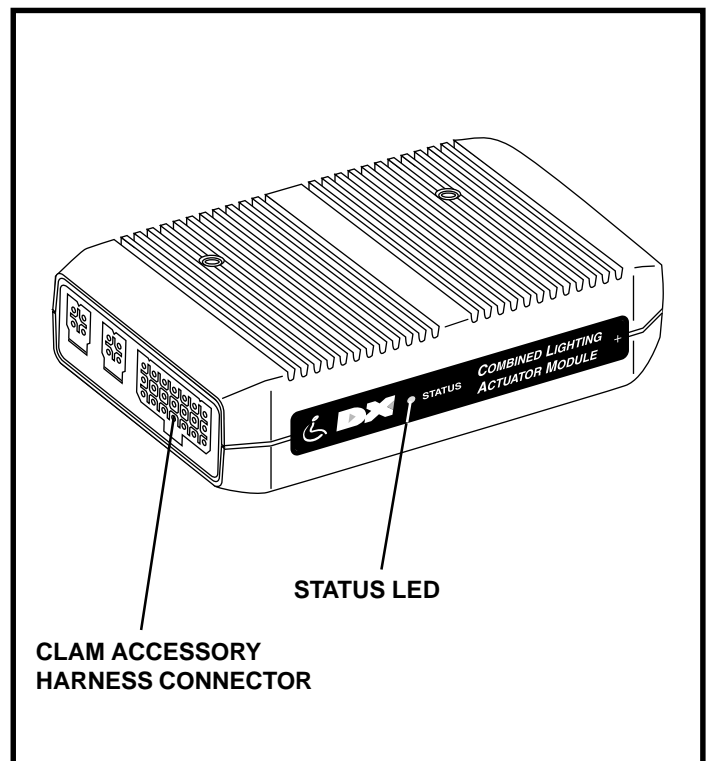


Figure 21. CLAM

- | | | |
|--------------------------------------|-----------------------------|---|
| 1 JOYSTICK MODULE | 5 POWER INTERFACE HARNESS | 9 RIGHT MOTOR |
| 2 DX BUS CABLE | 6 ONBOARD BATTERY CHARGER | 10 FRONT BATTERY HARNESS |
| 3 CHARGER/JOYSTICK INTERFACE HARNESS | 7 CHARGER INTERFACE HARNESS | 11 REAR BATTERY HARNESS |
| 4 POWER MODULE | 8 LEFT MOTOR | 12 CHARGER POWER CORD INTERFACE HARNESS |
| | | 13 LEFT MOTOR INTERFACE HARNESS |
| | | 14 RIGHT MOTOR INTERFACE HARNESS |

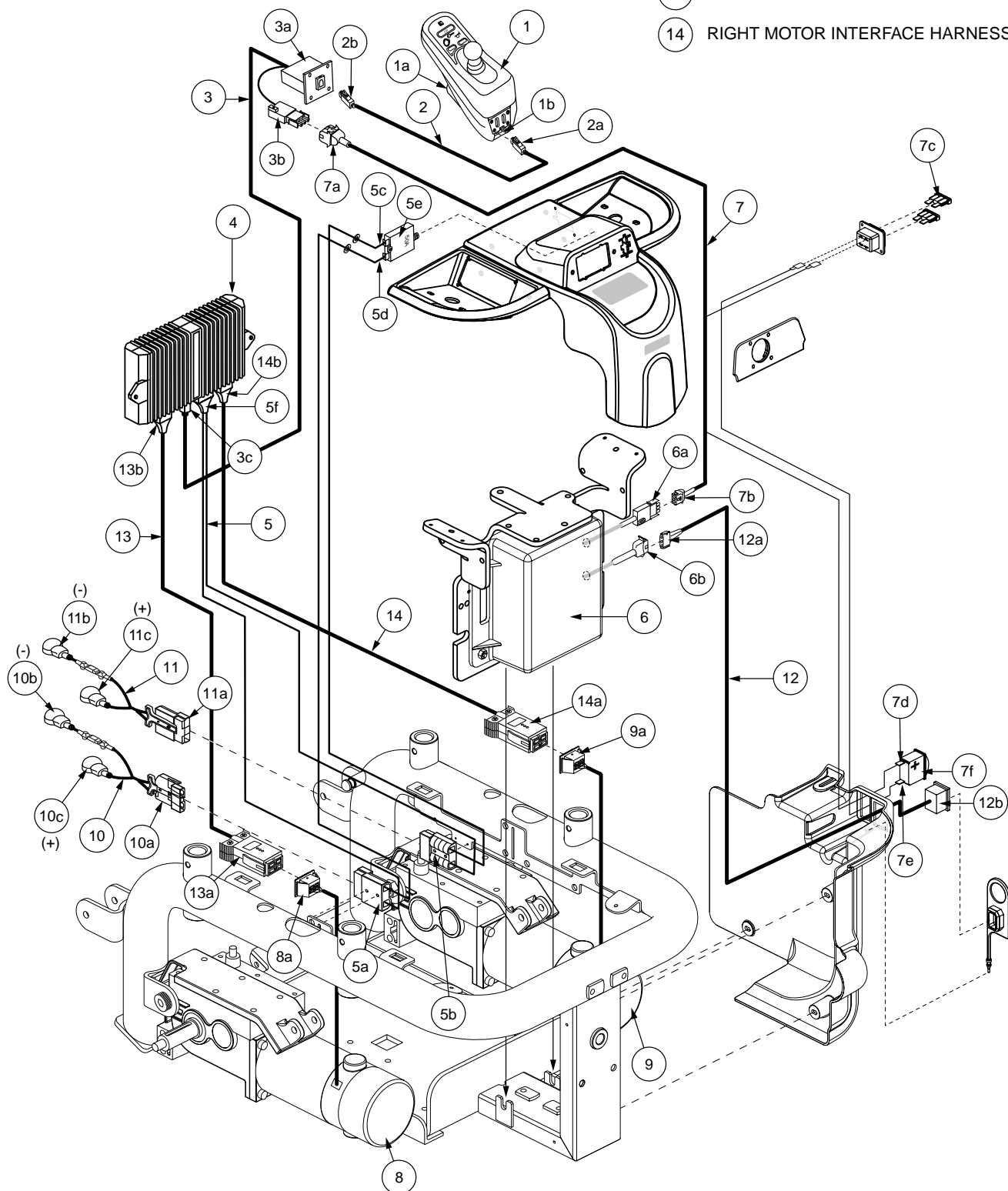


Diagram 2. Jazzy 1121 Europa Wiring Diagram - 3D