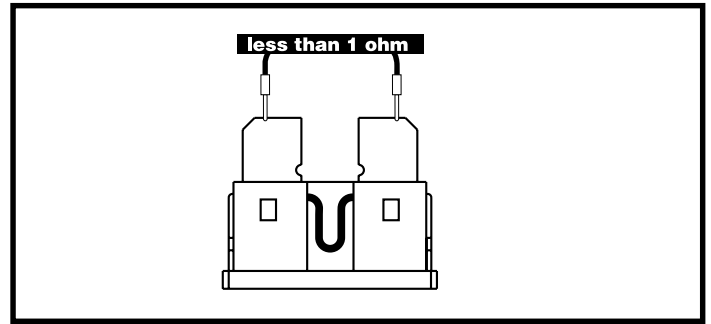


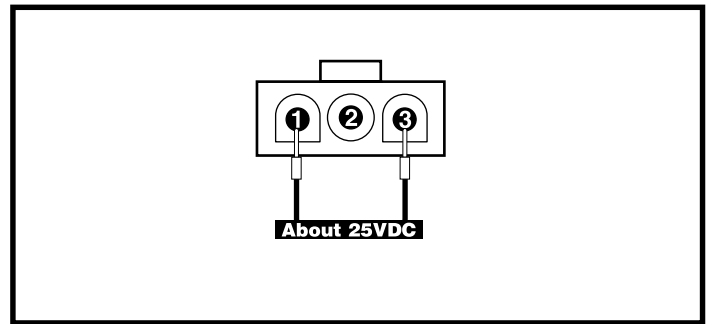


**WARNING!** The replacement fuse must exactly match the rating of the old fuse. Failure to use properly rated fuses may cause damage to the electrical system and may result in personal injury.

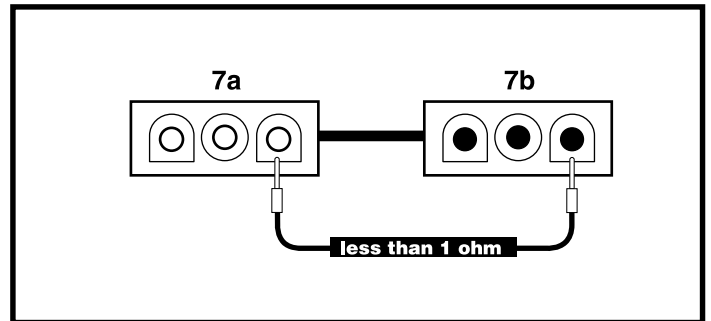
23. Reinstall the fuse.
24. Remove the seat and foot platform assembly. Refer to the power base owner's manual.
25. Remove the shroud. **See figure 11.**
26. Unfasten the electronics tray from the frame and lift it up. **See figure 12.**
27. Unplug connector 7b from connector 6a. **See diagram 2.**
28. Measure voltage across pin 1 and pin 3 on connector 7b. **See figure 18.**
  - If your multimeter indicates 0VDC, then go to next step.
  - If your multimeter indicates total battery voltage (about 25VDC), then replace the onboard battery charger (6) and retest the system.
29. Unplug connector 7a from connector 3b. **See diagram 2.**
30. Measure resistance across pin 3 on connector 7a and pin 3 on connector 7b. **See figure 19.**
  - If your multimeter indicates more than 1 ohm, then go to next step.
  - If your multimeter indicates less than 1 ohm, then replace the charger/joystick interface harness (3) and retest the system.
31. Verify that the charger interface harness (7) is connected to the fuse (7c) and ammeter (7f) properly. **See diagram 2.**
  - If they are connected properly, then go to the next step.
  - If they are not connected properly, then reconnect and retest the system.
32. Measure resistance across the two ammeter terminals.
  - If your multimeter indicates less than 1 ohm, then replace the charger interface harness (7) and retest the system.
  - If your multimeter indicates an open, then replace the ammeter (7f) and retest the system.



**Figure 17. Fuse 7c**



**Figure 18. Connector 7b**



**Figure 19. Connectors 7a and 7b**

## SECTION 3 - SYSTEM STATUS LED FLASH CODES

### Flash Code #1 - DX Module Fault

#### Symptom:

The System Status LED flashes one time and pauses. This sequence is repeated until the fault is cleared.

#### Diagnosis:

- An auto download has occurred with the joystick module (1).
- The joystick module (1) is not programmed correctly.
- The DX bus cable (2) may be faulty.
- The power module (4) or the joystick module (1) may be faulty.

When you replace the power module (4), the joystick module (1) automatically downloads information to the new power module. This is designed to minimize the programming requirements associated with module servicing. When you replace a power module it is likely that the replacement module could have different programming than the one that it has been replaced.

This could put the power chair into a dangerous condition. The Dynamic system will automatically detect when a power module swap has occurred, and then the joystick module reprograms the new power module with the data from the old module.

**Solution:**

Use the following procedure:

1. Turn the power off, then back on again.
  - *If the fault still occurs*, then there may be a mismatch with the program. **Refer to “Flash Code #12 - Module Mismatch.”**

There may also be a problem with the DX bus cable (2) or an internal fault in the power module (4) or joystick module (1). Go to the next step.

2. Check the DX bus connection for any damage.
  - *If the DX bus cable is not damaged*, look for a status light on the power module. **See figure 20.**
  - *If the status light is flashing on the power module (4)*, then replace the power module (4) and retest the system.

## Flash Code #2 - DX Accessory Fault

**Symptom:**

The System Status LED flashes two times and pauses. This sequence is repeated until the fault is cleared.

**Diagnosis:**

There is an error in the Combined Lighting/Actuator Module (CLAM) connected to the Dynamic system. The CLAM has a status LED that indicates errors.

**Solution:**

Use the following procedure to find the source of the fault:

1. Check the status LED on the CLAM. **See figure 21.**
  - *If this LED is flashing*, then replace the CLAM.
2. The CLAM harness has two lines that need jumpers, slow stop #1 and slow stop #2. Check to make sure that the jumpers are present on both lines.
  - *If a jumper is not on both of the lines*, then replace the jumpers and retest the system.
  - *If a jumper is present on both lines*, then replace the CLAM accessory harness and retest the system.

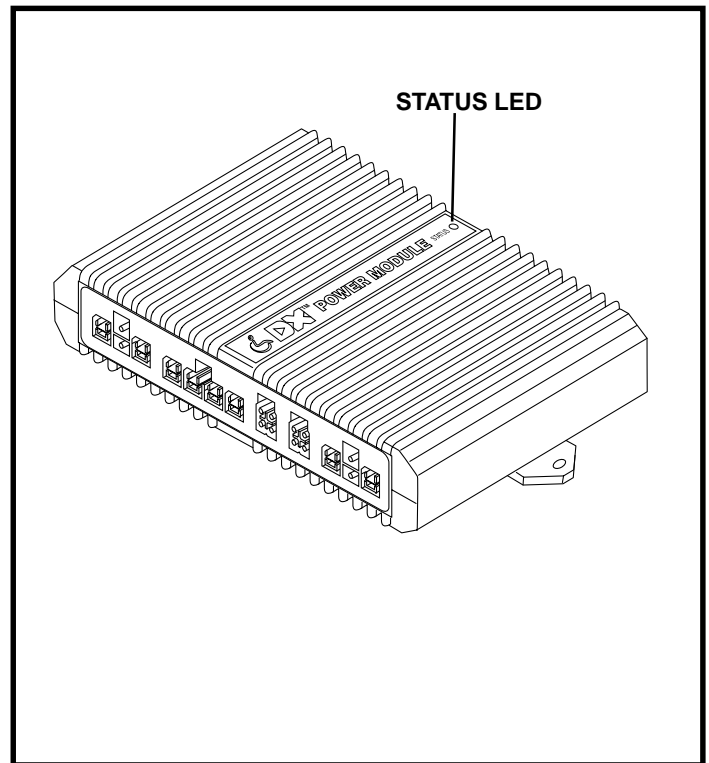


Figure 20. Dynamic Power Module

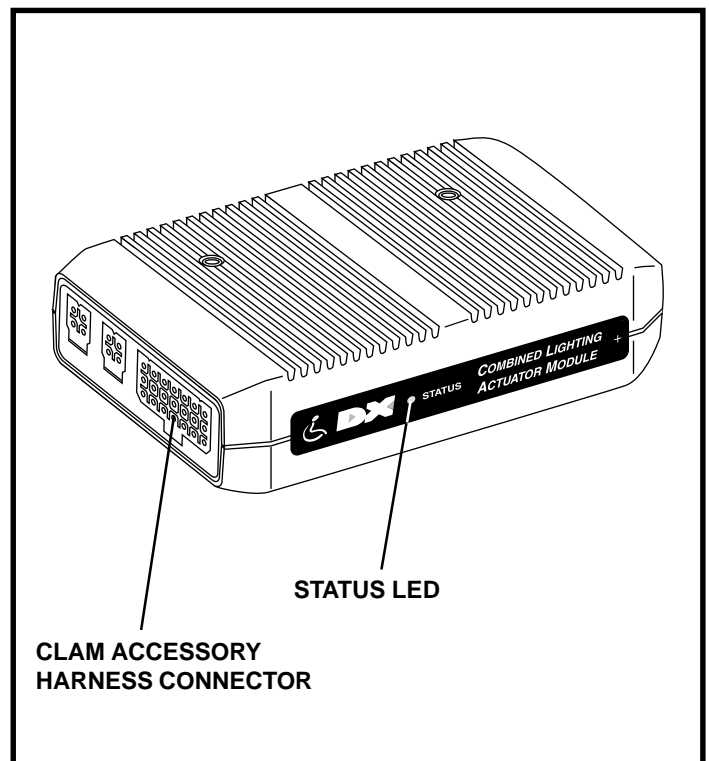


Figure 21. CLAM

- |                                      |                             |   |
|--------------------------------------|-----------------------------|---|
| 1 JOYSTICK MODULE                    | 5 POWER INTERFACE HARNESS   | 9 RIGHT MOTOR                           |
| 2 DX BUS CABLE                       | 6 ONBOARD BATTERY CHARGER   | 10 FRONT BATTERY HARNESS                |
| 3 CHARGER/JOYSTICK INTERFACE HARNESS | 7 CHARGER INTERFACE HARNESS | 11 REAR BATTERY HARNESS                 |
| 4 POWER MODULE                       | 8 LEFT MOTOR                | 12 CHARGER POWER CORD INTERFACE HARNESS |
|                                      |                             | 13 LEFT MOTOR INTERFACE HARNESS         |
|                                      |                             | 14 RIGHT MOTOR INTERFACE HARNESS        |

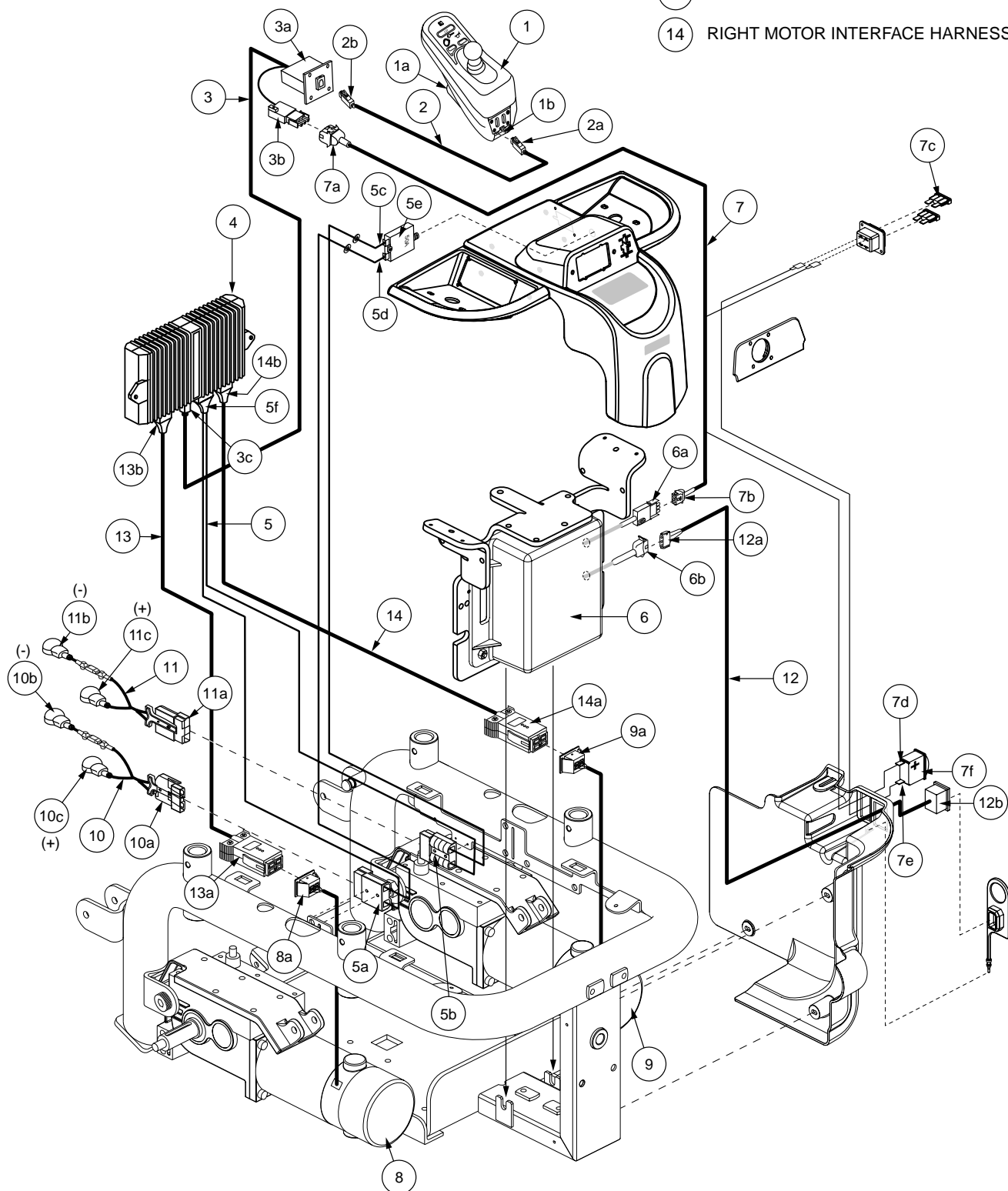


Diagram 2. Jazzy 1121 Europa Wiring Diagram - 3D