

SECTION 2 - POWER IS ON BUT POWER CHAIR WILL NOT DRIVE

Symptoms:

- Battery condition meter LEDs light up when the on/off key is pressed.
- Power chair will not drive.
- There is a dash in the drive mode indicator

Diagnosis:

- This may be an indication that the onboard battery charger is plugged into an electrical outlet and the unit is charging.
- This also may be an indication that there is an open in the charging system.

Solution:

Use the following procedure to find the source of the fault:

1. Plug the onboard battery charger into an electrical outlet and observe the ammeter (7f).
 - *If the ammeter moves*, then go to the next step.
 - *If the ammeter does not move*, **then go to step 13.**
2. Remove the seat and foot platform. Refer to the power base owner's manual.
3. Remove the shroud. **See figure 11.**
4. Unfasten the electronics tray from the frame and lift it up. **See figure 12.**
5. Unplug connector 7b from connector 6a. **See diagram 2.**

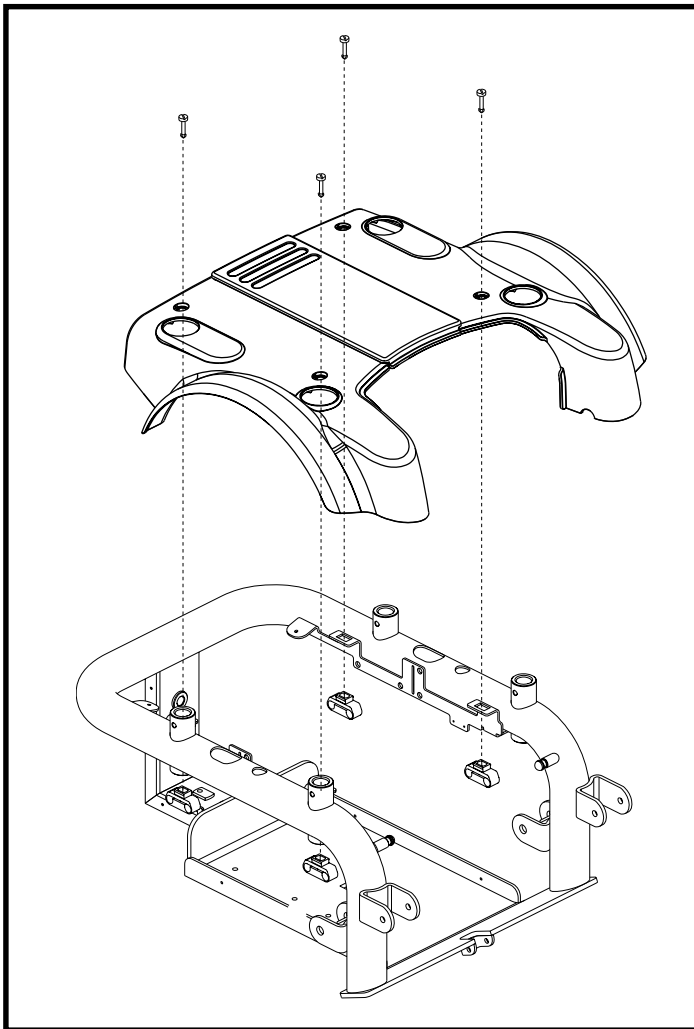


Figure 11. Jazzy 1121 Shroud Disassembly/Assembly

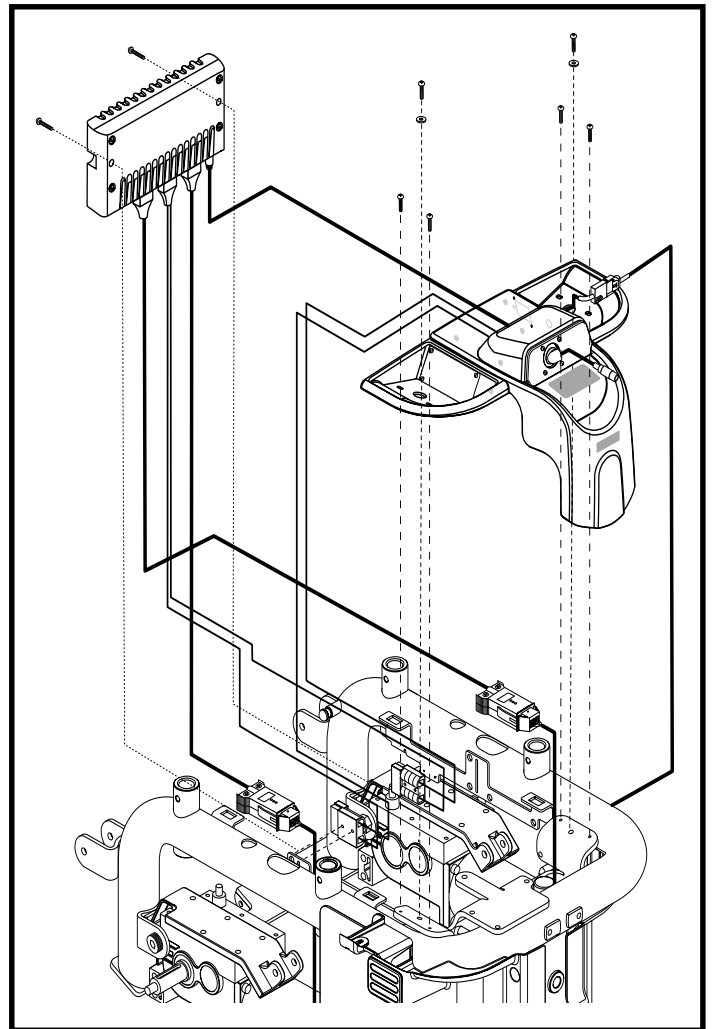


Figure 12. Jazzy 1121 Electronics Tray Disassembly/Assembly

6. Place a jumper into pin 1 and pin 2 on connector 7b and try to operate the power chair. **See figure 13.**
 - *If the power chair does not run*, then go to next step.
 - *If the power chair runs*, then replace the onboard battery charger (6) and retest the system.

7. Unplug connector 7a from connector 3b. **See diagram 2.**
8. Place a jumper into pin 1 and pin 2 on connector 3b and try to operate the power chair. **See figure 14.**
 - *If the power chair does not run*, then go to next step.
 - *If the power chair runs*, then replace the charger interface harness (7) and retest the system.

9. Unplug connector 3c from the power module (4). **See diagram 2.**
10. Unplug connector 2b from connector 3a. **See diagram 2.**
11. Plug connector 2b into connector 4c. **See diagram 1.**
12. Press the on/off key and try to operate the power chair.
 - *If the power chair runs*, then replace the charger/joystick interface harness (3) and retest the system.
 - *If the power chair does not run*, replace the power module (4) and retest the system.

13. Unplug the charger power cord from the electrical outlet and immediately try to operate the power chair.
 - *If the power chair does not run*, then go to the next step.
 - *If the power chair runs*, **then go to step 21.**

14. Remove the seat and foot platform assembly. Refer to the power base owner's manual.
15. Remove the shroud. **See figure 11.**
16. Unfasten the electronics tray from the frame and lift it up. **See figure 12.**

17. Unplug connector 7b from connector 6a. **See diagram 2.**
18. Measure voltage across pin 1 and pin 3 on connector 7b. **See figure 15.**
 - *If your multimeter indicates 0VDC*, then go to the next step.
 - *If your multimeter indicates total battery voltage (about 25VDC)*, then replace the onboard battery charger (6) and retest the system.

19. Unplug connector 7a from connector 3b. **See diagram 2.**
20. Measure resistance across pin 1 on connector 7b and pin 1 on connector 7a. **See figure 16.**
 - *If your multimeter indicates less than 1 ohm*, then replace the charger/joystick interface harness (3) and retest the system.
 - *If your multimeter indicates an open*, then replace the charger interface harness (7) and retest the system.

21. Remove the charger fuse 7c. **See diagram 2.**

22. Measure resistance across the two fuse blades. **See figure 17.**
 - *If your multimeter indicates less than 1 ohm*, then go to the next step.
 - *If your multimeter indicates an open*, then replace the fuse and retest the system.

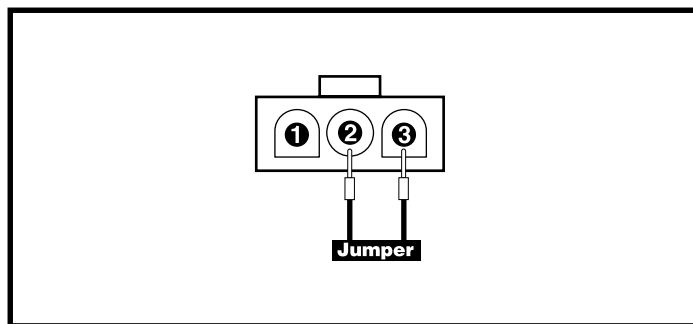


Figure 13. Connector 7b - jumpered

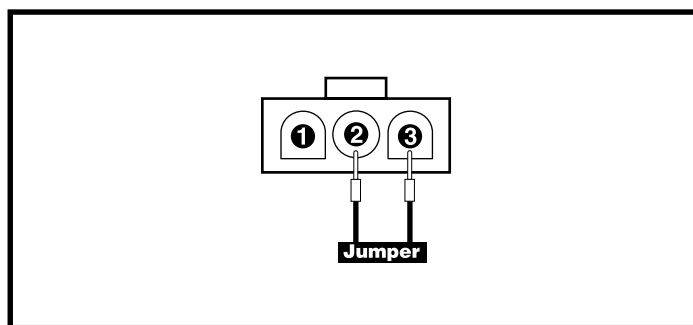


Figure 14. Connector 3b - jumpered

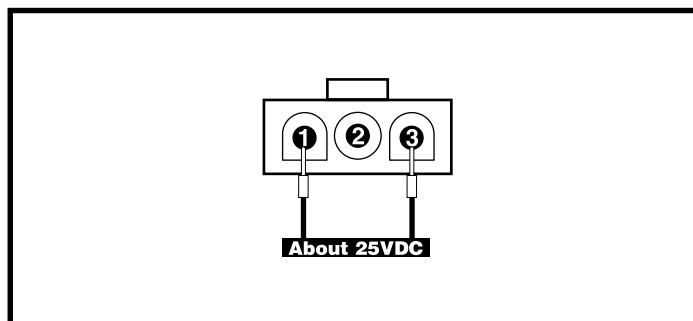


Figure 15. Connector 7b

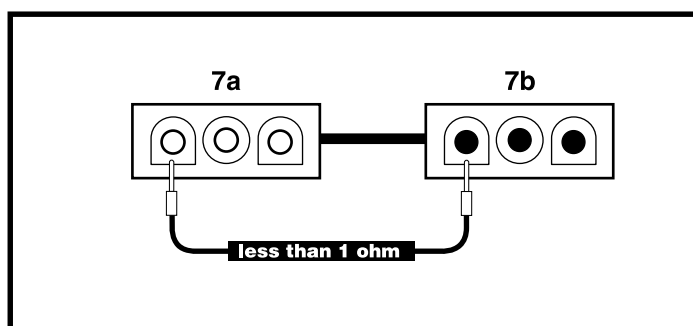


Figure 16. Connectors 7a and 7b



WARNING! The replacement fuse must exactly match the rating of the old fuse. Failure to use properly rated fuses may cause damage to the electrical system and may result in personal injury.

23. Reinstall the fuse.
24. Remove the seat and foot platform assembly. Refer to the power base owner's manual.
25. Remove the shroud. **See figure 11.**
26. Unfasten the electronics tray from the frame and lift it up. **See figure 12.**
27. Unplug connector 7b from connector 6a. **See diagram 2.**
28. Measure voltage across pin 1 and pin 3 on connector 7b. **See figure 18.**
 - If your multimeter indicates 0VDC, then go to next step.
 - If your multimeter indicates total battery voltage (about 25VDC), then replace the onboard battery charger (6) and retest the system.
29. Unplug connector 7a from connector 3b. **See diagram 2.**
30. Measure resistance across pin 3 on connector 7a and pin 3 on connector 7b. **See figure 19.**
 - If your multimeter indicates more than 1 ohm, then go to next step.
 - If your multimeter indicates less than 1 ohm, then replace the charger/joystick interface harness (3) and retest the system.
31. Verify that the charger interface harness (7) is connected to the fuse (7c) and ammeter (7f) properly. **See diagram 2.**
 - If they are connected properly, then go to the next step.
 - If they are not connected properly, then reconnect and retest the system.
32. Measure resistance across the two ammeter terminals.
 - If your multimeter indicates less than 1 ohm, then replace the charger interface harness (7) and retest the system.
 - If your multimeter indicates an open, then replace the ammeter (7f) and retest the system.

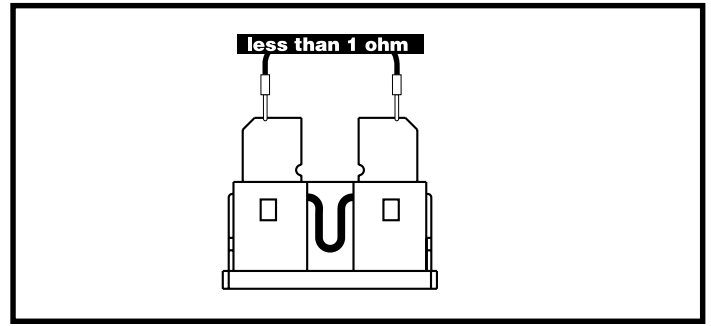


Figure 17. Fuse 7c

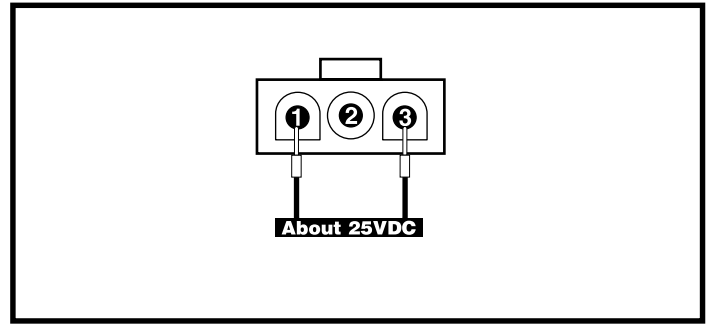


Figure 18. Connector 7b

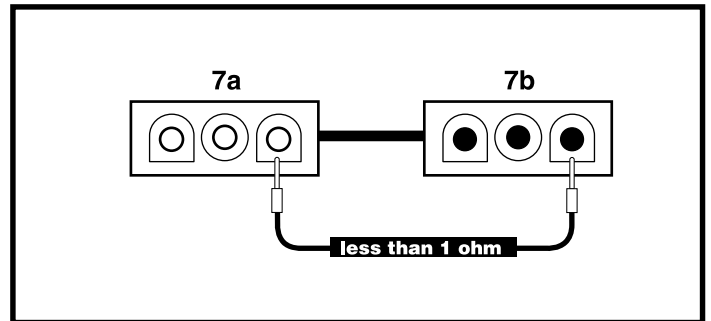


Figure 19. Connectors 7a and 7b

SECTION 3 - SYSTEM STATUS LED FLASH CODES

Flash Code #1 - DX Module Fault

Symptom:

The System Status LED flashes one time and pauses. This sequence is repeated until the fault is cleared.

Diagnosis:

- An auto download has occurred with the joystick module (1).
- The joystick module (1) is not programmed correctly.
- The DX bus cable (2) may be faulty.
- The power module (4) or the joystick module (1) may be faulty.

When you replace the power module (4), the joystick module (1) automatically downloads information to the new power module. This is designed to minimize the programming requirements associated with module servicing. When you replace a power module it is likely that the replacement module could have different programming than the one that it has been replaced.

This could put the power chair into a dangerous condition. The Dynamic system will automatically detect when a power module swap has occurred, and then the joystick module reprograms the new power module with the data from the old module.

Solution:

Use the following procedure:

1. Turn the power off, then back on again.
 - *If the fault still occurs*, then there may be a mismatch with the program. **Refer to “Flash Code #12 - Module Mismatch.”**

There may also be a problem with the DX bus cable (2) or an internal fault in the power module (4) or joystick module (1). Go to the next step.

2. Check the DX bus connection for any damage.
 - *If the DX bus cable is not damaged*, look for a status light on the power module. **See figure 20.**
 - *If the status light is flashing on the power module (4)*, then replace the power module (4) and retest the system.

Flash Code #2 - DX Accessory Fault

Symptom:

The System Status LED flashes two times and pauses. This sequence is repeated until the fault is cleared.

Diagnosis:

There is an error in the Combined Lighting/Actuator Module (CLAM) connected to the Dynamic system. The CLAM has a status LED that indicates errors.

Solution:

Use the following procedure to find the source of the fault:

1. Check the status LED on the CLAM. **See figure 21.**
 - *If this LED is flashing*, then replace the CLAM.
2. The CLAM harness has two lines that need jumpers, slow stop #1 and slow stop #2. Check to make sure that the jumpers are present on both lines.
 - *If a jumper is not on both of the lines*, then replace the jumpers and retest the system.
 - *If a jumper is present on both lines*, then replace the CLAM accessory harness and retest the system.

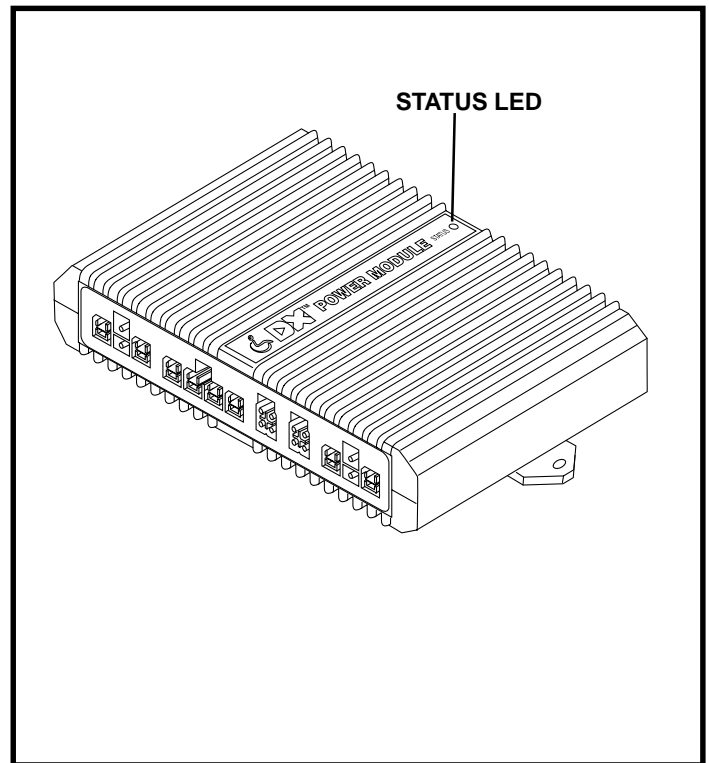


Figure 20. Dynamic Power Module

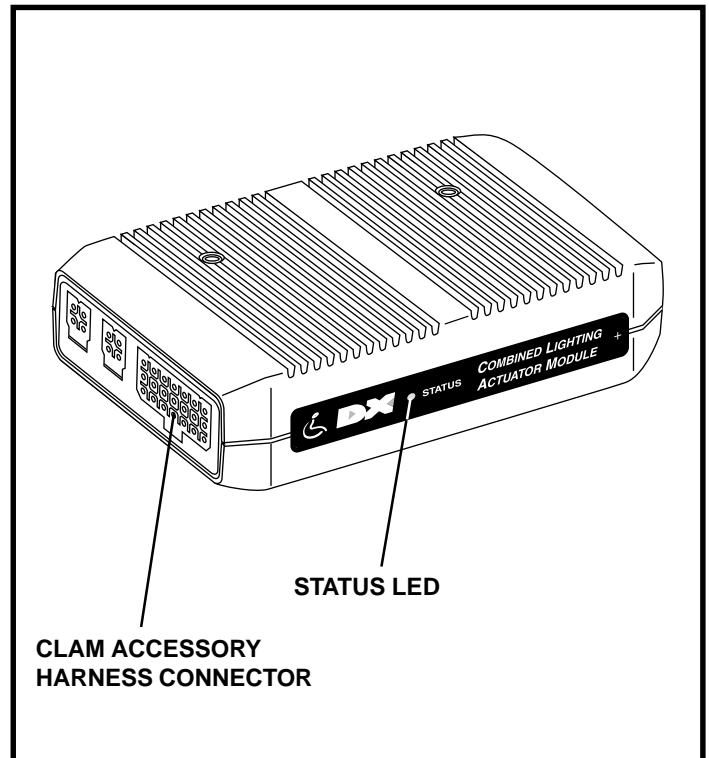


Figure 21. CLAM

- | | | |
|--------------------------------------|-----------------------------|---|
| 1 JOYSTICK MODULE | 5 POWER INTERFACE HARNESS | 9 RIGHT MOTOR |
| 2 DX BUS CABLE | 6 ONBOARD BATTERY CHARGER | 10 FRONT BATTERY HARNESS |
| 3 CHARGER/JOYSTICK INTERFACE HARNESS | 7 CHARGER INTERFACE HARNESS | 11 REAR BATTERY HARNESS |
| 4 POWER MODULE | 8 LEFT MOTOR | 12 CHARGER POWER CORD INTERFACE HARNESS |
| | | 13 LEFT MOTOR INTERFACE HARNESS |
| | | 14 RIGHT MOTOR INTERFACE HARNESS |

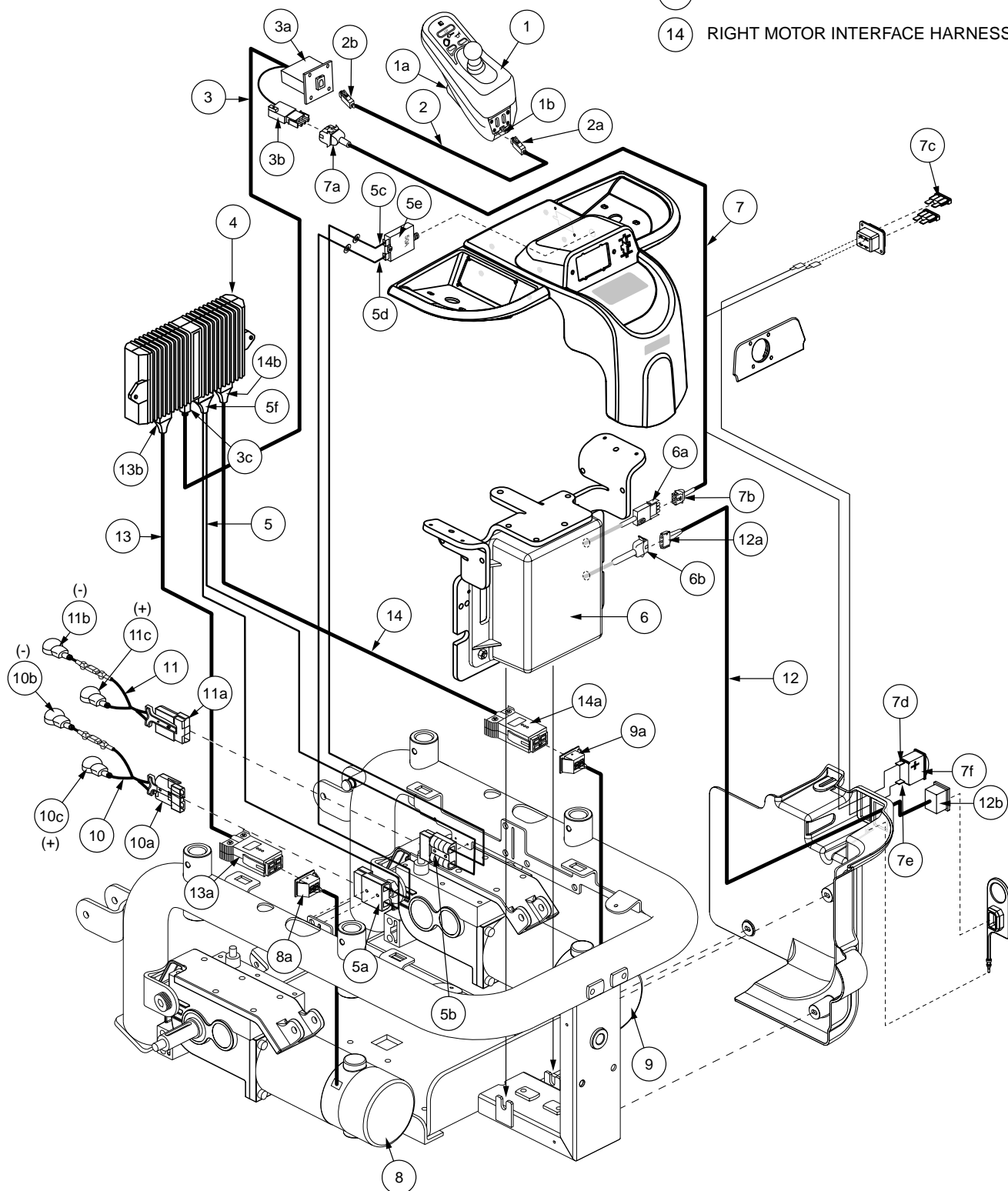


Diagram 2. Jazzy 1121 Europa Wiring Diagram - 3D