

- | | | |
|--------------------------------------|-----------------------------|---|
| 1 JOYSTICK MODULE | 5 POWER INTERFACE HARNESS | 9 RIGHT MOTOR |
| 2 DX BUS CABLE | 6 ONBOARD BATTERY CHARGER | 10 FRONT BATTERY HARNESS |
| 3 CHARGER/JOYSTICK INTERFACE HARNESS | 7 CHARGER INTERFACE HARNESS | 11 REAR BATTERY HARNESS |
| 4 POWER MODULE | 8 LEFT MOTOR | 12 CHARGER POWER CORD INTERFACE HARNESS |
| | | 13 LEFT MOTOR INTERFACE HARNESS |
| | | 14 RIGHT MOTOR INTERFACE HARNESS |

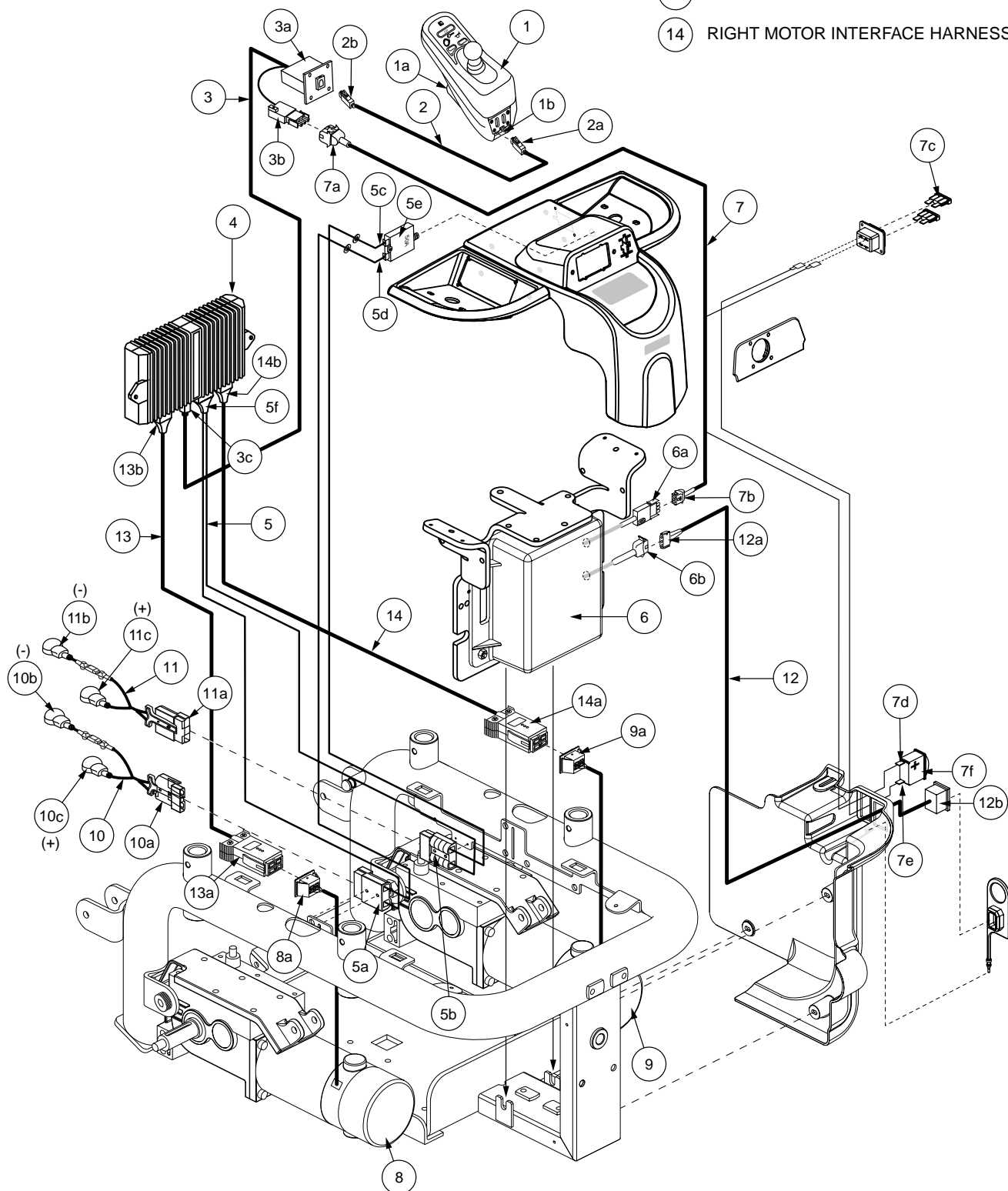


Diagram 2. Jazzy 1121 Europa Wiring Diagram - 3D