

- | | | | | | |
|---|--------------------------------|---|-----------------------|----|-----------------|
| 1 | REMOTE PLUS JOYSTICK | 5 | BATTERY CABLE | 9 | LEFT MOTOR |
| 2 | POWER MODULE | 6 | FRONT BATTERY HARNESS | 10 | CIRCUIT BREAKER |
| 3 | REDEL CABLE | 7 | REAR BATTERY HARNESS | 11 | RUN PLUG |
| 4 | POWER TAKE-OFF/INHIBIT HARNESS | 8 | RIGHT MOTOR | 12 | REDEL RUN PLUG |

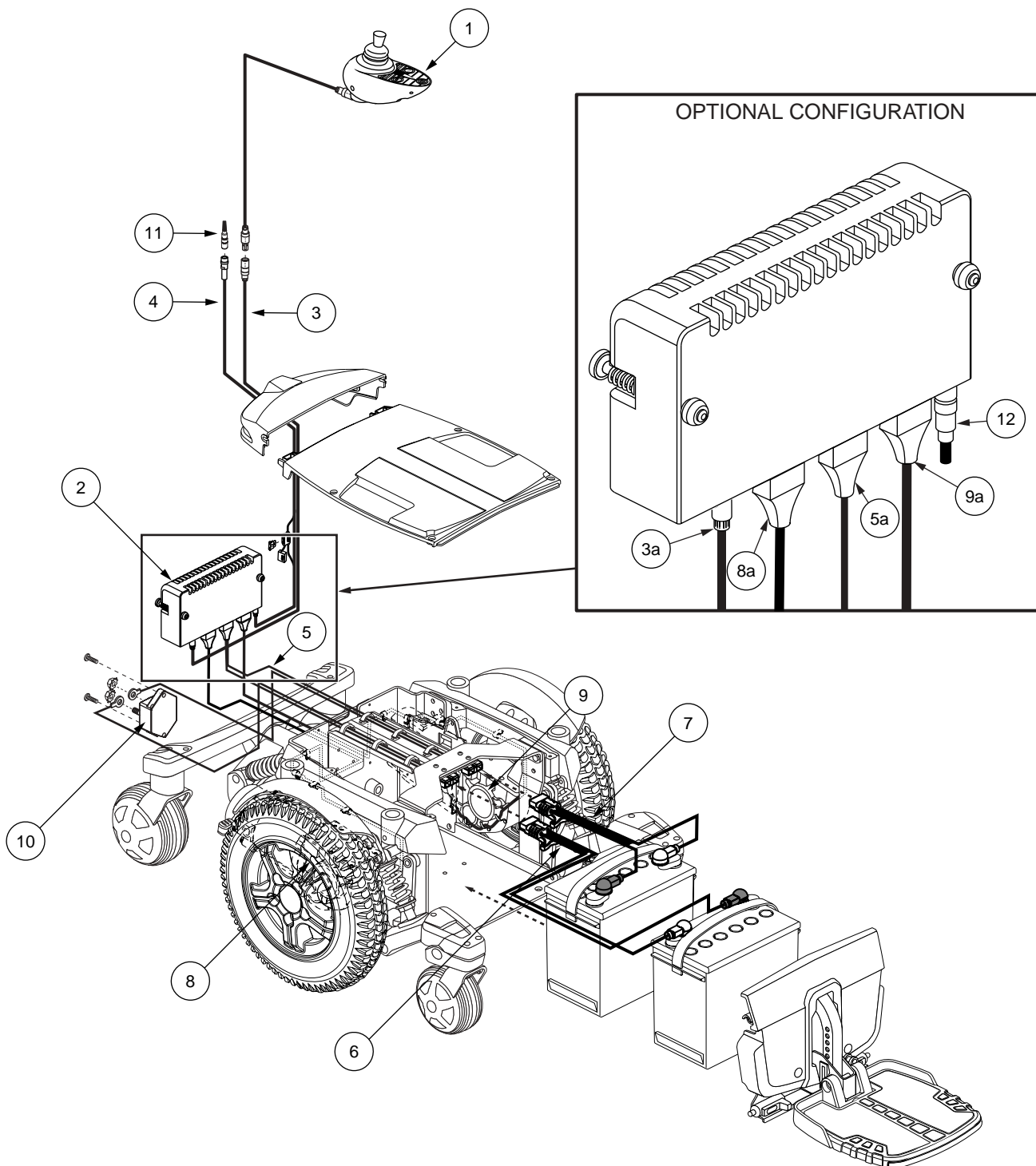


Diagram 1. Quantum 6000 Troubleshooting Key

Solution:

Use the following procedure to find the source of the problem:

1. Make sure there is no physical damage to the joystick.
 2. Turn the Remote Plus off. Make sure the joystick is not being depressed in any direction.
 3. Turn the Remote Plus back on.
- *If the Remote Plus still indicates this fault, then replace the joystick and retest the system.*

Flash Code #8 - Possible Controller Fault**Symptoms:**

There is a steady flash of eight battery condition meter LEDs (three red, four yellow, one green).

Diagnosis:

There may be two causes for this fault:

1. The power module (2) has a problem with the joystick (1).
2. The battery voltage is 18–19VDC when the system is powered on. This is a rare occurrence.

Solution:

Use the following procedure to find the source of the problem:

1. Replace the power module (2) and retest the system.
- *If this fault occurs again, then recharge the batteries and retest the system.*
- *If this fault occurs after system retest, then contact Quantum Technical Service.*

Flash Code #9 - Solenoid Brake Fault**Symptoms:**

There is a steady flash of nine battery condition meter LEDs (three red, four yellow, two green).

Diagnosis:

There is an open on the motor brakes.

Solution:

Use the following procedure to find the source of the problem:

1. Place the power chair in drive mode. Refer to the power base owner's manual.
2. Remove the rear shroud cover. Refer to the power base owner's manual.
3. Disconnect the power module (2) from the module mounting bracket. **See figure 37.**
4. Unplug connector 9a from connector 2b. **See diagram 3.**

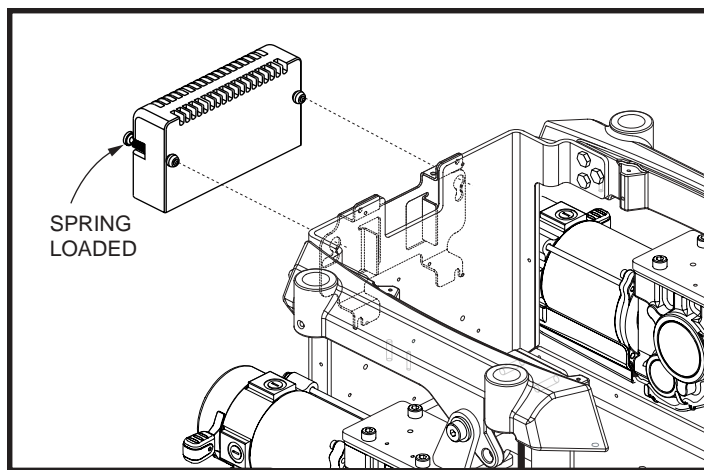


Figure 37. Power Module Removal