

- | | | | | | |
|---|--|---|-----------------------|----|-----------------|
| 1 | Q-LOGIC JOYSTICK | 5 | BATTERY CABLE | 9 | LEFT MOTOR |
| 2 | POWER MODULE | 6 | FRONT BATTERY HARNESS | 10 | CIRCUIT BREAKER |
| 3 | BUS CABLE | 7 | REAR BATTERY HARNESS | 11 | RUN PLUG |
| 4 | POWER TAKE-OFF/INHIBIT HARNESS
(OR 14-PIN RUN PLUG) | 8 | RIGHT MOTOR | | |

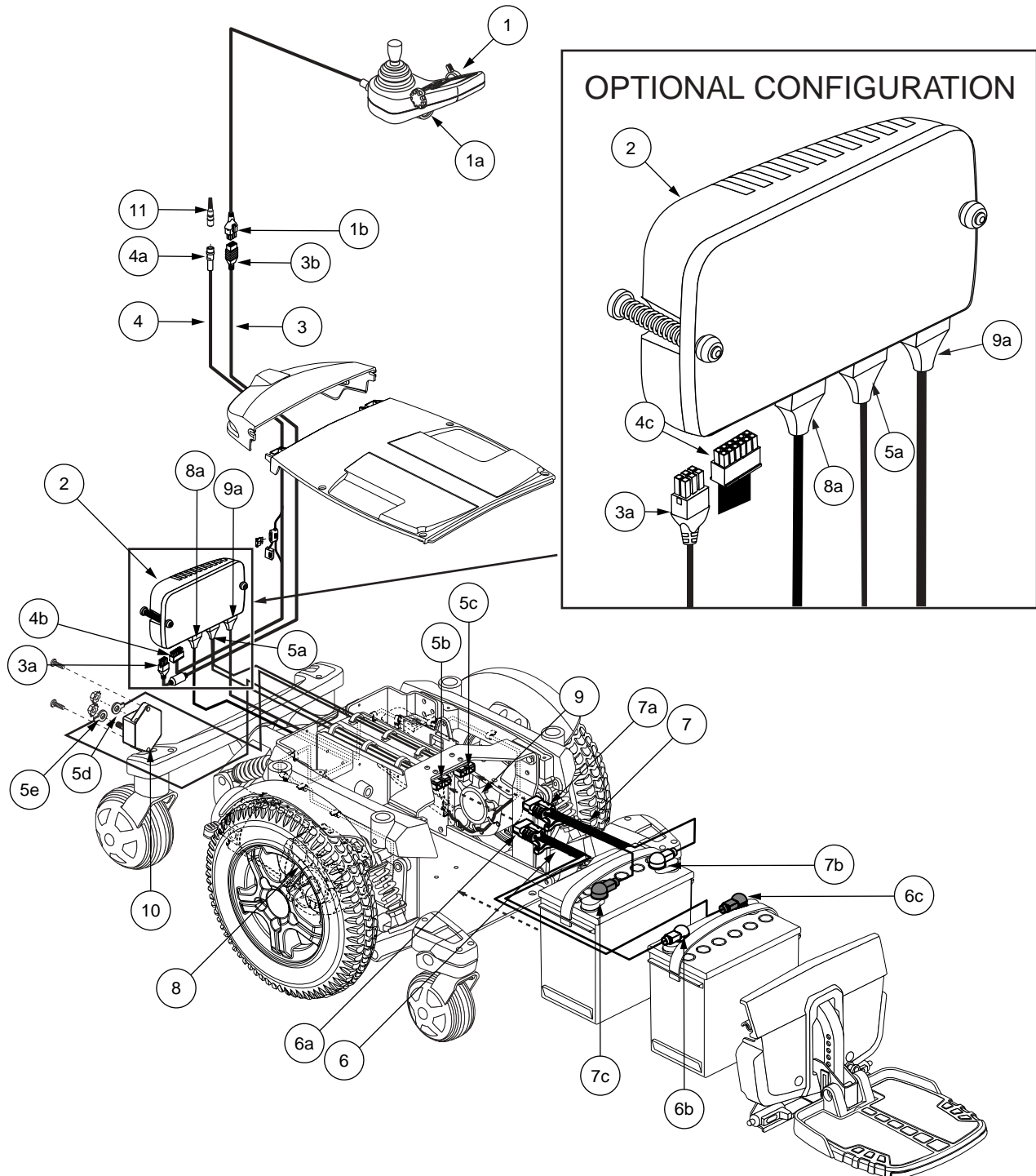


Diagram 1. Quantum 6000 Q-Logic Troubleshooting Key

RIGHT MOTOR ERROR

Use the following procedure to find the source of the problem:

1. Unplug connector 8a from connector 2e. **See diagram 3.**
2. Measure resistance from pin 1 to pin 2 on connector 8a. **See figure 18.**
 - If your multimeter indicates about 0.5 — 1.5 ohms, then replace the power module and retest the system.
 - If your multimeter indicates a reading outside of this range (0.5 — 1.5 ohms), then go to the next step.
3. Remove the motor brushes from the right motor and inspect them. **See figure 19.**
 - If the brushes are worn below 0.25 in. or they are physically damaged, then replace the brushes and retest the system.
 - If the brushes do not appear to be worn below 0.25 in. or they are not physically damaged, then replace the right motor and retest the system.

LEFT MOTOR ERROR

Use the following procedure to find the source of the problem:

1. Unplug connector 9a from connector 2c. **See diagram 3.**
2. Measure resistance from pin 1 to pin 2 on connector 9a. **See figure 20.**
 - If your multimeter indicates about 0.5 — 1.5 ohms, then replace the power module and retest the system.
 - If your multimeter indicates a reading outside of this range (0.5 — 1.5 ohms), then go to the next step.
3. Remove the motor brushes from the left motor and inspect them. **See figure 21.**
 - If the brushes are worn below 0.25 in. or they are physically damaged, then replace the brushes and retest the system.
 - If the brushes do not appear to be worn below 0.25 in. or they are not physically damaged, then replace the left motor and retest the system.

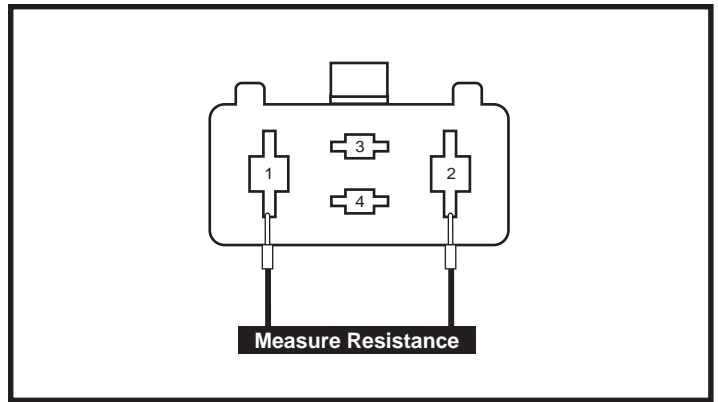


Figure 18. Connector 8a

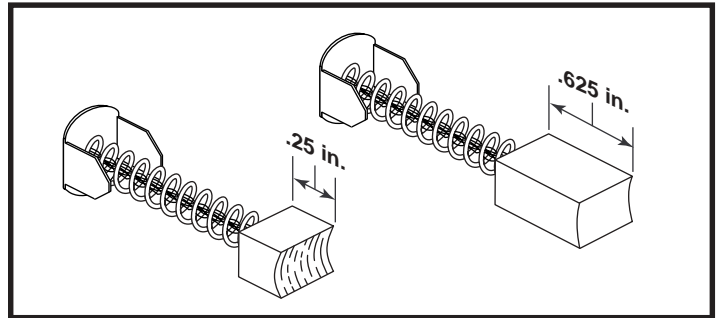


Figure 19. Motor Brushes

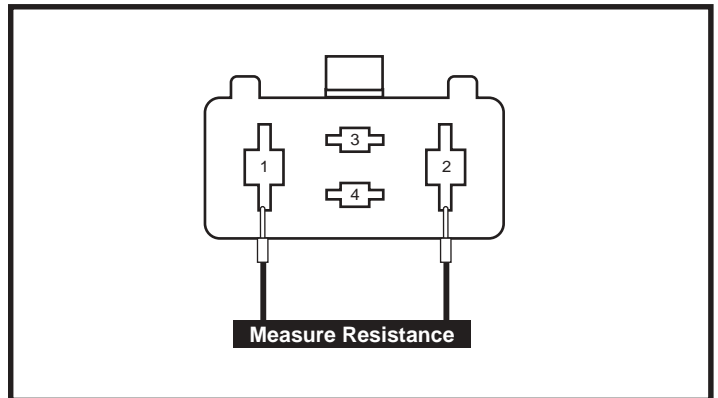


Figure 20. Connector 9a