

- | | | |
|---|-------------------------|--------------------|
| 1 Q-LOGIC JOYSTICK | 5 BATTERY CABLE | 9 LEFT MOTOR |
| 2 POWER MODULE | 6 FRONT BATTERY HARNESS | 10 CIRCUIT BREAKER |
| 3 BUS CABLE | 7 REAR BATTERY HARNESS | 11 RUN PLUG |
| 4 POWER TAKE-OFF/INHIBIT HARNESS (OR 14-PIN RUN PLUG) | 8 RIGHT MOTOR | |

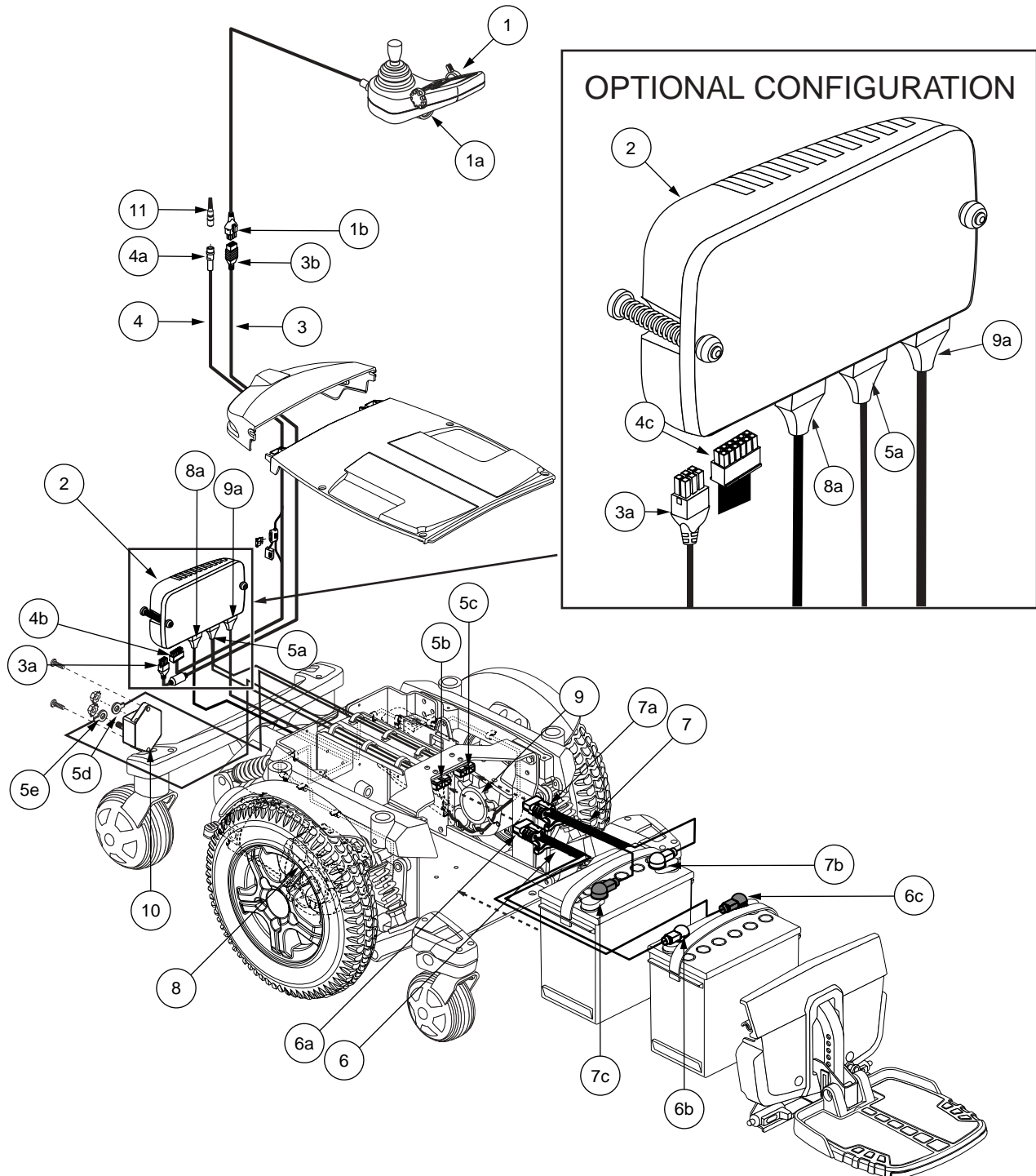


Diagram 1. Quantum 6000 Q-Logic Troubleshooting Key

SOLENOID BRAKE ERROR

Use the following procedure to find the source of the problem:

1. Place the power chair in drive mode. Refer to the power base owner's manual.
2. Unplug connector 8a and 9a from the power module. See **diagram 3**.
3. Measure resistance from pin 3 to pin 4 on connector 8a. See **figure 21**.
 - If your multimeter indicates about 41 — 45 ohms, then go to the next step.
 - If your multimeter indicates an open, then replace the right brake assembly and retest the system.
4. Measure resistance from pin 3 to pin 4 on connector 9a. See **figure 22**.
 - If your multimeter indicates about 41 — 45 ohms, then replace the power module and retest the system.
 - If your multimeter indicates an open, then replace the left brake assembly and retest the system.

MISSING OR DEFECTIVE MODULE

Symptoms:

- The batteries are fully charged.
- The on/off key is deflected and the joystick displays a missing or defective device (Sip & Puff, ECU, Stand Alone Joystick (SAJ), Enhanced Display, and Attendant Control) fault.

Diagnosis:

One of the modules is either missing or defective.

NOTE: If you are intentionally removing a module from the system this fault will appear.

Solution:

Use the following procedure to find the source of the problem:

1. Make sure that all of the connections are correct.
 - If the connections are correct, then call Quantum Technical Service for further assistance.
 - If you have intentionally removed a module, then use the Save System Configuration function on the programmer.

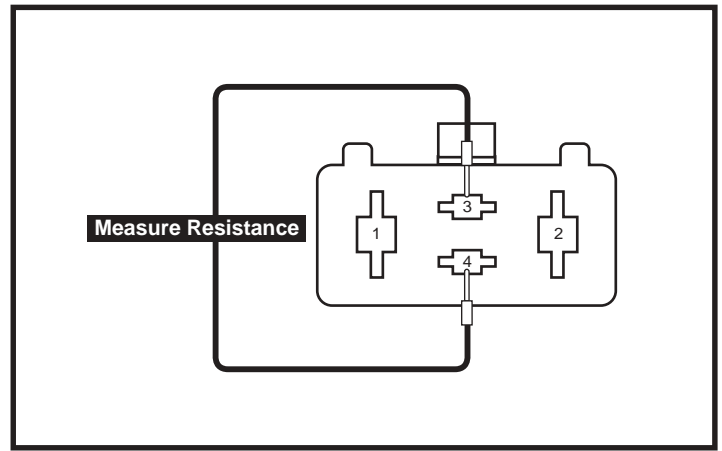


Figure 21. Connector 8a

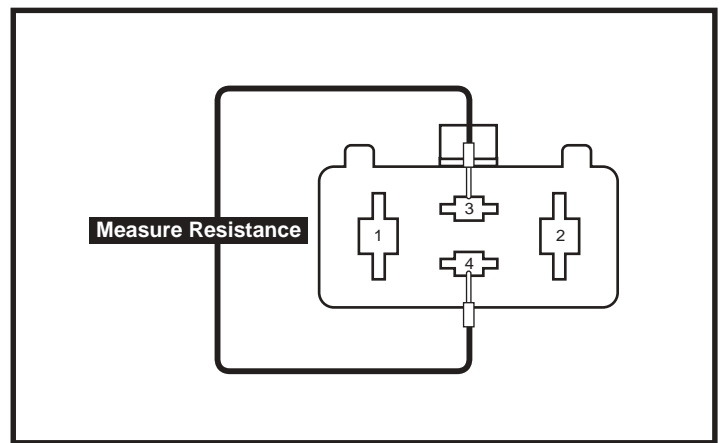


Figure 22. Connector 9a