

- |  |                         |                    |
|--|-------------------------|--------------------|
| 1 Q-LOGIC JOYSTICK                                       | 5 BATTERY CABLE         | 9 LEFT MOTOR       |
| 2 POWER MODULE   | 6 FRONT BATTERY HARNESS | 10 CIRCUIT BREAKER |
| 3 BUS CABLE  | 7 REAR BATTERY HARNESS  | 11 RUN PLUG        |
| 4 POWER TAKE-OFF/INHIBIT HARNESS<br>(OR 14-PIN RUN PLUG) | 8 RIGHT MOTOR           |                    |

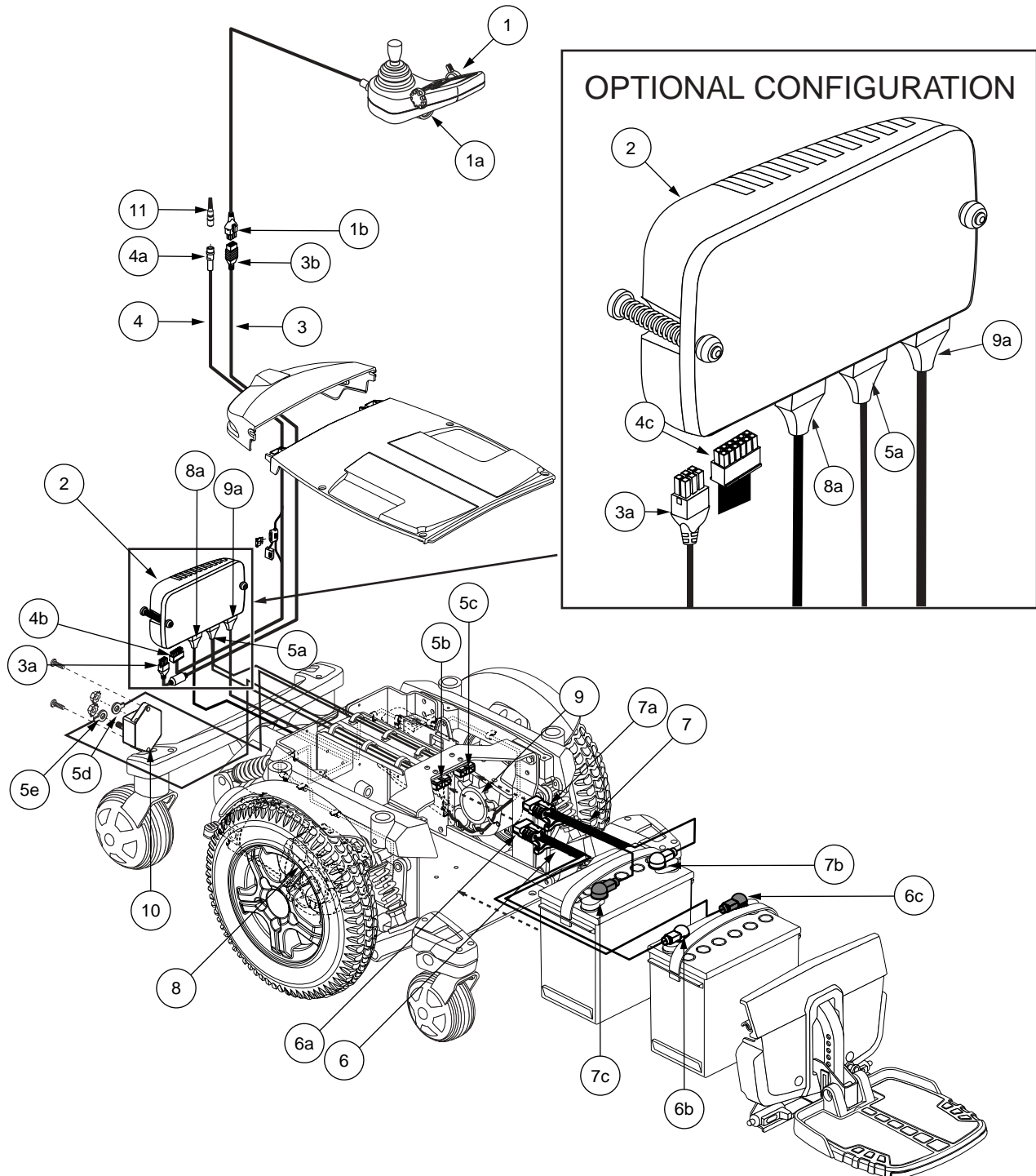


Diagram 1. Quantum 6000 Q-Logic Troubleshooting Key

## SECTION 3 - POWER CHAIR WILL NOT DRIVE DUE TO SYSTEM LOCK

### Symptoms:

- The power chair turns on but the joystick displays the message “System Lock”.
- The batteries are fully charged.
- All electrical components are properly connected.

### Diagnosis:

The power chair is in System Lock mode.

### Solution:

Use the following procedure to place the joystick in System Lock mode:

1. Turn on the power to the joystick.
2. While the power is on, press the Mode switch until a beep is heard.
3. The display states “System Lock”. After several seconds, the system will then power itself off.

**NOTE:** There are two ways to perform a system lock:

- 1) Hold down the mode switch until the system shuts down.
- 2) Select “System Lock” in the AUX menu (if one is used).

### To turn the system back on:

1. Toggle the on/off lever to power on the joystick display.
2. Push the joystick forward until a beep is heard.
3. Push the joystick backwards until a beep is heard.

**NOTE:** System Lock must be enabled (ON) in order to lock out the joystick. Refer to the programming text. See figure 15.

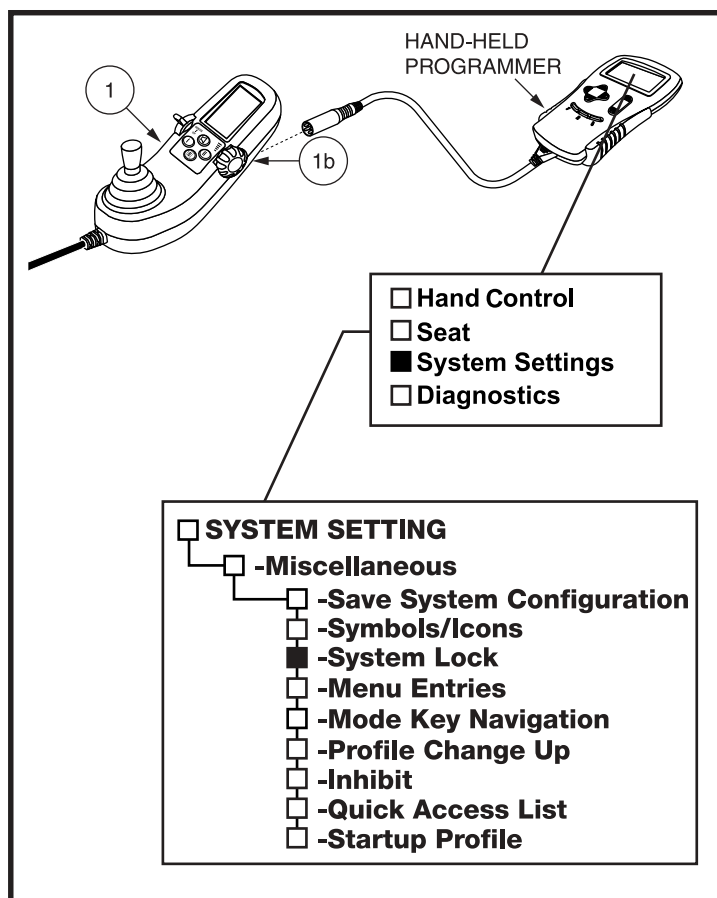


Figure 15. System Lock Controller Programming