

- | | | | | | |
|---|--|---|-----------------------|----|-----------------|
| 1 | Q-LOGIC JOYSTICK | 5 | BATTERY CABLE | 9 | LEFT MOTOR |
| 2 | POWER MODULE | 6 | FRONT BATTERY HARNESS | 10 | CIRCUIT BREAKER |
| 3 | BUS CABLE | 7 | REAR BATTERY HARNESS | 11 | RUN PLUG |
| 4 | POWER TAKE-OFF/INHIBIT HARNESS
(OR 14-PIN RUN PLUG) | 8 | RIGHT MOTOR | | |

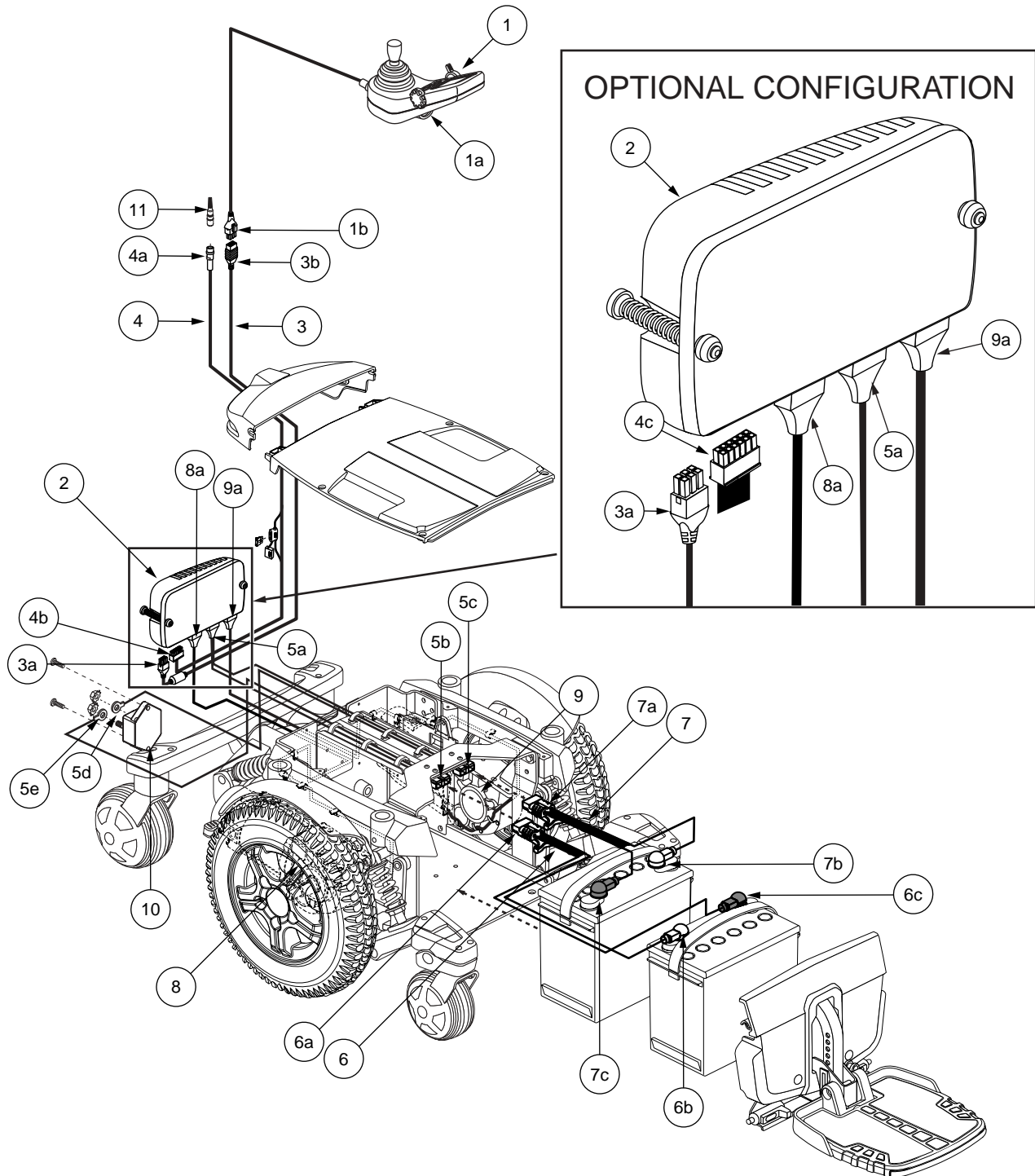


Diagram 1. Quantum 6000 Q-Logic Troubleshooting Key

SECTION 2 - POWER IS ON, BUT POWER CHAIR WILL NOT DRIVE

Symptoms:

- The battery condition meter LEDs scroll.
- The power chair will not drive.
- When joystick is deflected, charger inhibit error #107 is displayed.
- Off-board charger is not plugged into Q-Logic joystick.

Diagnosis:

There is an open in the inhibit circuit.

Solution:

Use the following procedure to find the source of the fault:

NOTE: *If power chair is not equipped with a PTO harness and a round 4-pin barrel connector, it will have a 14-pin run plug in connector 2e. If the power chair is equipped with the 14-pin run plug, go to step 3.*

1. Locate the 4-pin water-tight barrel connector 4a. See **diagram 2**.
2. Place a jumper between pin 3 and 4 of connector 4a. See **figure 12**.
 - *If the power chair drives and is not equipped with a power positioning system, then replace the run plug (11).*
 - *If the power chair drives and is equipped with a power positioning system, then refer to the troubleshooting guide for that specific seating system.*
 - *If the unit does not drive, then go to the next step.*
3. Unplug connector 4b, or the 14-pin run plug (4c) if equipped, from connector 2e. See **diagram 3**.
4. Place a jumper from pin 1 to pin 9 on connector 2e. See **figure 13**.
 - *If power chair drives, then replace the power take off/inhibit harness (4) (or 14-pin run plug (4c) if equipped) and retest the system.*
 - *If the power chair does not drive, the power module may be programmed incorrectly. Verify the inhibit program. See **figure 14**. The inhibit should be set to “high.”*
 - *If the power chair does not drive and the inhibit program was verified, then replace the power module (2) and retest the system.*

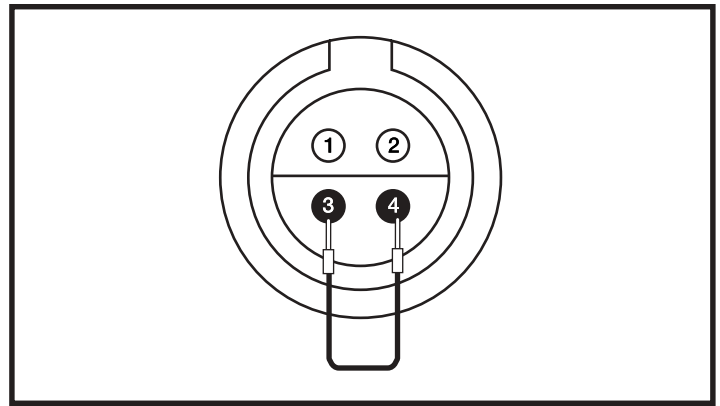


Figure 12. Connector 4a

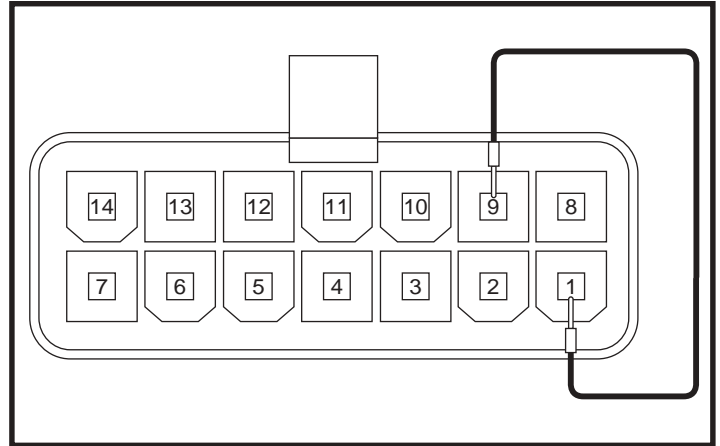


Figure 13. Connector 2e

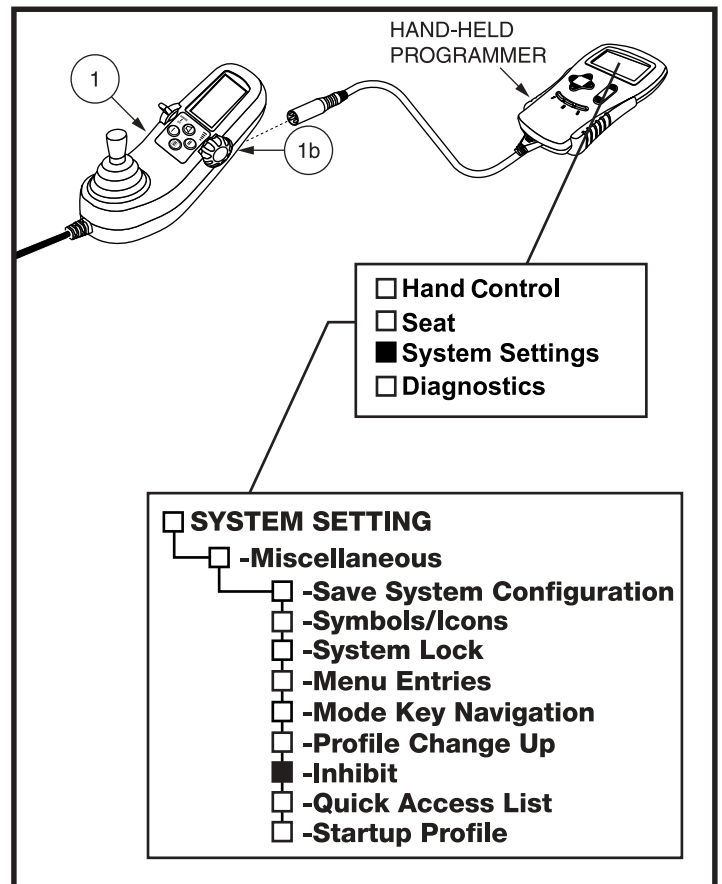


Figure 14. Inhibit Controller Programming