

- | | | |
|---|-------------------------|--------------------|
| 1 Q-LOGIC JOYSTICK | 5 BATTERY CABLE | 9 LEFT MOTOR |
| 2 POWER MODULE | 6 FRONT BATTERY HARNESS | 10 CIRCUIT BREAKER |
| 3 BUS CABLE | 7 REAR BATTERY HARNESS | 11 RUN PLUG |
| 4 POWER TAKE-OFF/INHIBIT HARNESS (OR 14-PIN RUN PLUG) | 8 RIGHT MOTOR | |

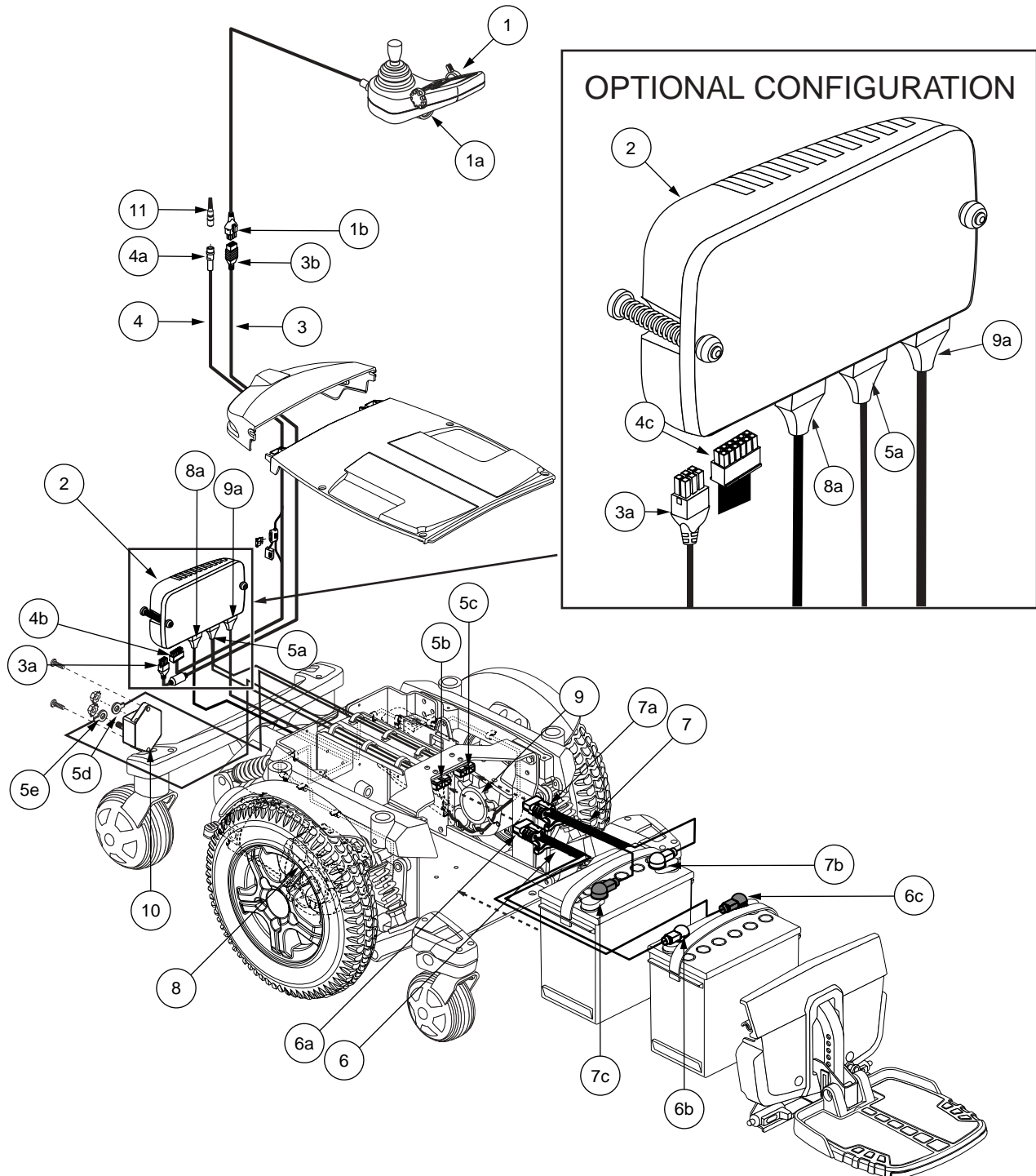


Diagram 1. Quantum 6000 Q-Logic Troubleshooting Key