

Flash Code #7, #8, #9, #10, and #11 - Controller Faults

Flash Code #7 - FLIGHT Controller Module Fault

Flash Code #8 - FLIGHT Power Module Fault

Flash Code #9 - FLIGHT Communications Fault

Flash Code #10 - Unknown Fault

Flash Code #11 - Incompatible Controller Fault

Symptoms:

The Battery Condition Meter LEDs flash seven, eight, nine, ten or eleven times then pause.

Diagnosis:

- Joystick Module
- Power Module
- Communications between the two

Solution:

Use the following procedure to clear the code.

1. Remove the seat. Refer to the power base owner's manual.
2. Remove the rear shroud. See figure 3.
3. Remove the center shroud. See figure 3.
4. Unplug connector 8a from connector 1b and unplug connector 8b from the power module (6). See diagram 3.
5. Measure resistance across the following: (See figure 32).
 - pin 1 on connector 8a and pin 1 on connector 8b.
 - pin 2 on connector 8a and pin 2 on connector 8b.
 - pin 3 on connector 8a and pin 3 on connector 8b.
 - pin 4 on connector 8a and pin 4 on connector 8b.
 - *If your multimeter indicates an open*, then replace the controller harness (8) and retest the system.
 - *If your multimeter indicates less than 1 ohm*, then go to the next step.
6. Check connector 1b and connector 8b for damage or corrosion.
 - *If damage or corrosion is present*, then clean corrosion or then replace damaged part and retest the system.
 - *If no damage or corrosion is present*, the problem could be the power module or joystick. Replace one with a known good unit and retest the system.
 - *If problem still exists*, then replace the other with a known good unit and retest the system.

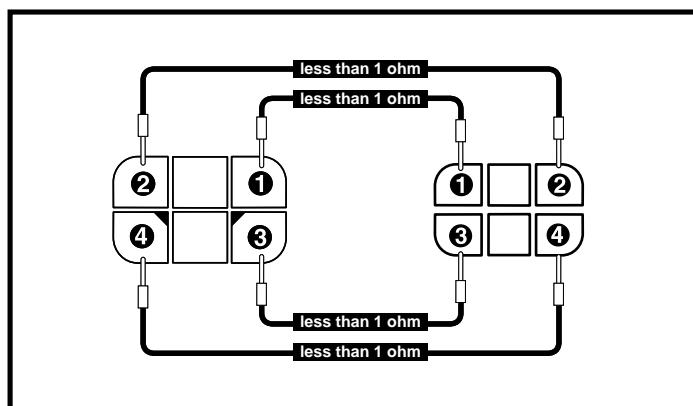


Figure 32. Connector 8a and 8b

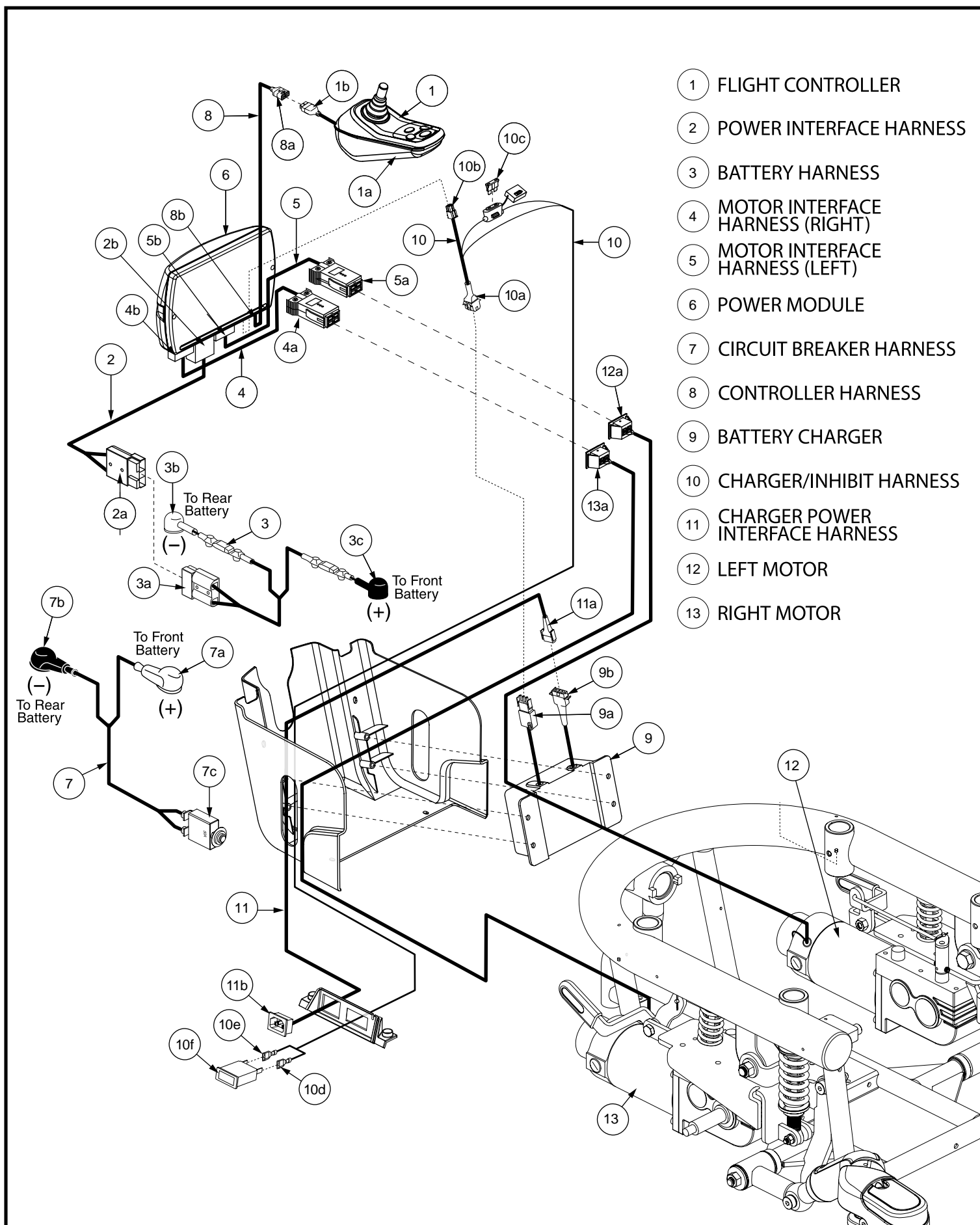


Diagram 2.