

## Flash Code #4 - Right Motor Fault

### Symptoms:

Battery Condition Meter LEDs flash four times then pause.

### Diagnosis:

This is an indication of a right motor harness open.

### Solution:

Use the following procedure to clear the fault code:

1. Remove the seat. Refer to power base owner's manual.
2. Remove the rear shroud. See figure 3.
3. Remove the center shroud. See figure 3.
4. Unplug connector 4b from the power module (6). See diagram 3.
5. Measure resistance across pin 1 and pin 2 on connector 4b. See figure 25.
  - If your multimeter does not indicate 0.5 to 1.5 ohms, then go to the next step.
  - If your multimeter indicates about 0.5 to 1.5 ohms, then replace the power module (6) and retest the system.
6. Unplug connector 13a from connector 4a. See diagram 3.
7. Measure resistance across pin 1 and pin 2 on connector 13a. See figure 26.
  - If your multimeter does not indicate 0.5 to 1.5 ohms, then go to the next step.
  - If your multimeter indicates about 0.5 to 1.5 ohms, then replace the right motor interface harness (4) and retest the system.
8. Remove the brushes from the right motor and inspect them. See figure 27.
  - If the brushes are worn below 0.25 in. or are physically damaged, then replace the brushes and retest the system.
  - If the brushes are not worn below 0.25 in. and are not physically damaged, then replace the right motor (13) and retest the system.

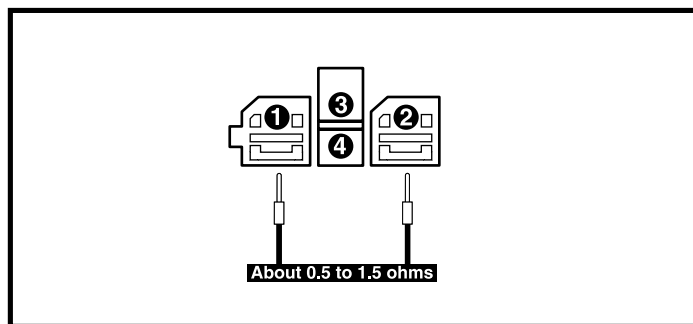


Figure 25. Connector 4b

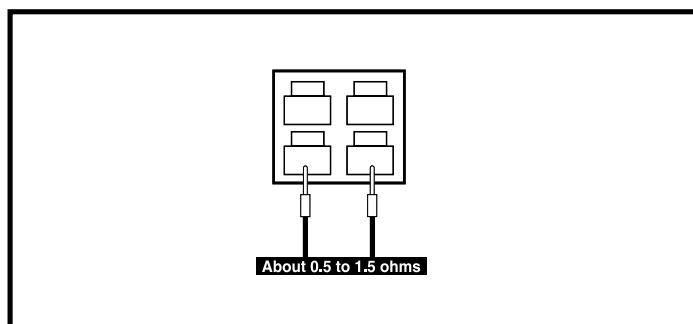


Figure 26. Connector 13a

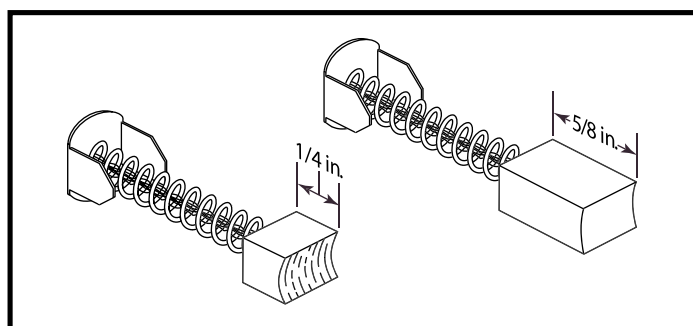


Figure 27. Motor Brushes

## Flash Code #5 - Left Park Brake Fault

### Symptom:

Battery Condition Meter LEDs flash five times then pause.

### Diagnosis:

This is an indication of a left park brake open.

### Solution:

Use the following procedure to clear the fault code:

1. Remove the seat. Refer to power base owner's manual.
2. Remove the rear shroud. See figure 3.

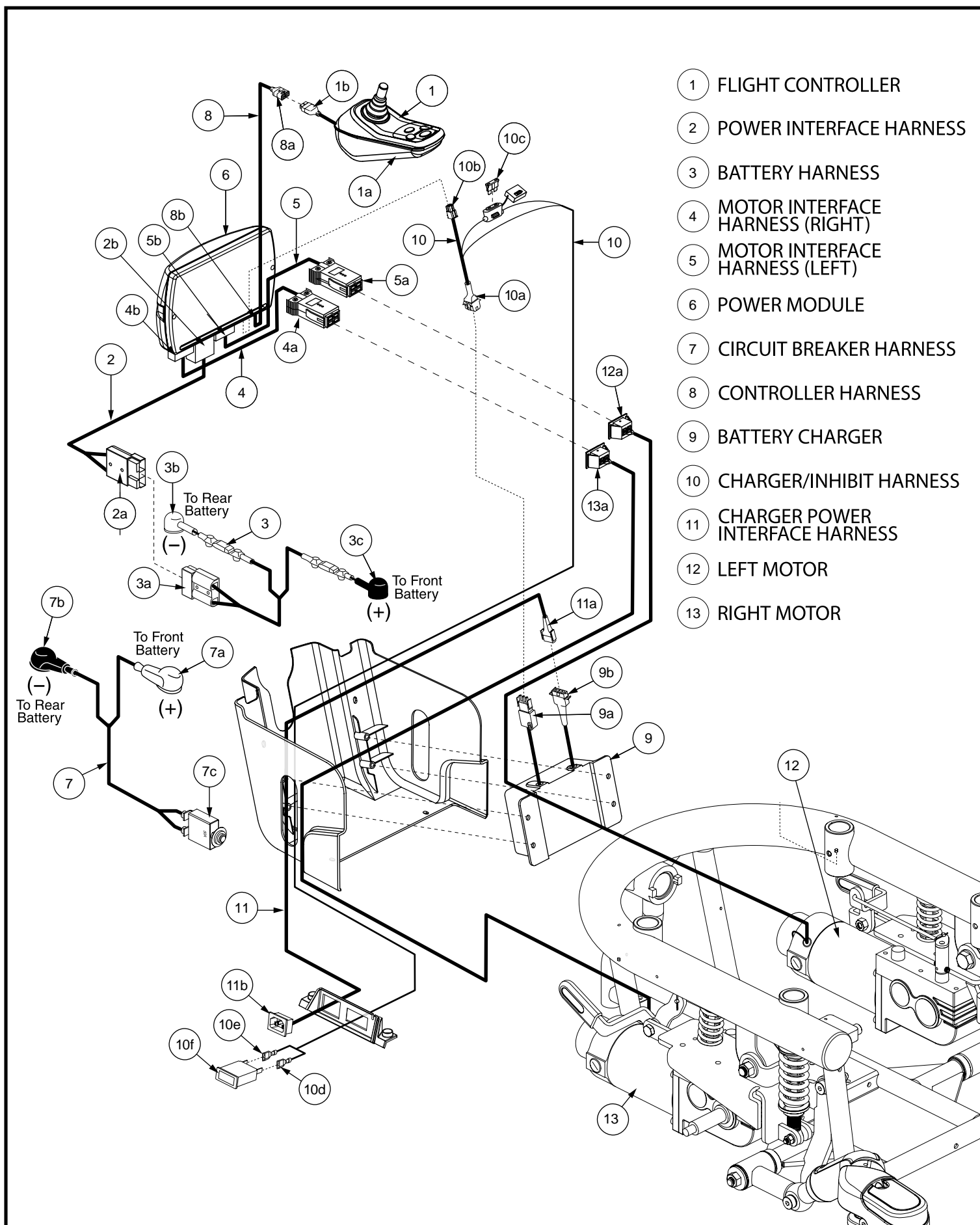


Diagram 2.