

- |  |                         |                    |
|--|-------------------------|--------------------|
| 1 Q-LOGIC JOYSTICK                                       | 5 BATTERY CABLE         | 9 LEFT MOTOR       |
| 2 POWER MODULE   | 6 FRONT BATTERY HARNESS | 10 CIRCUIT BREAKER |
| 3 BUS CABLE  | 7 REAR BATTERY HARNESS  | 11 RUN PLUG        |
| 4 POWER TAKE-OFF/INHIBIT HARNESS<br>(OR 14-PIN RUN PLUG) | 8 RIGHT MOTOR           |                    |

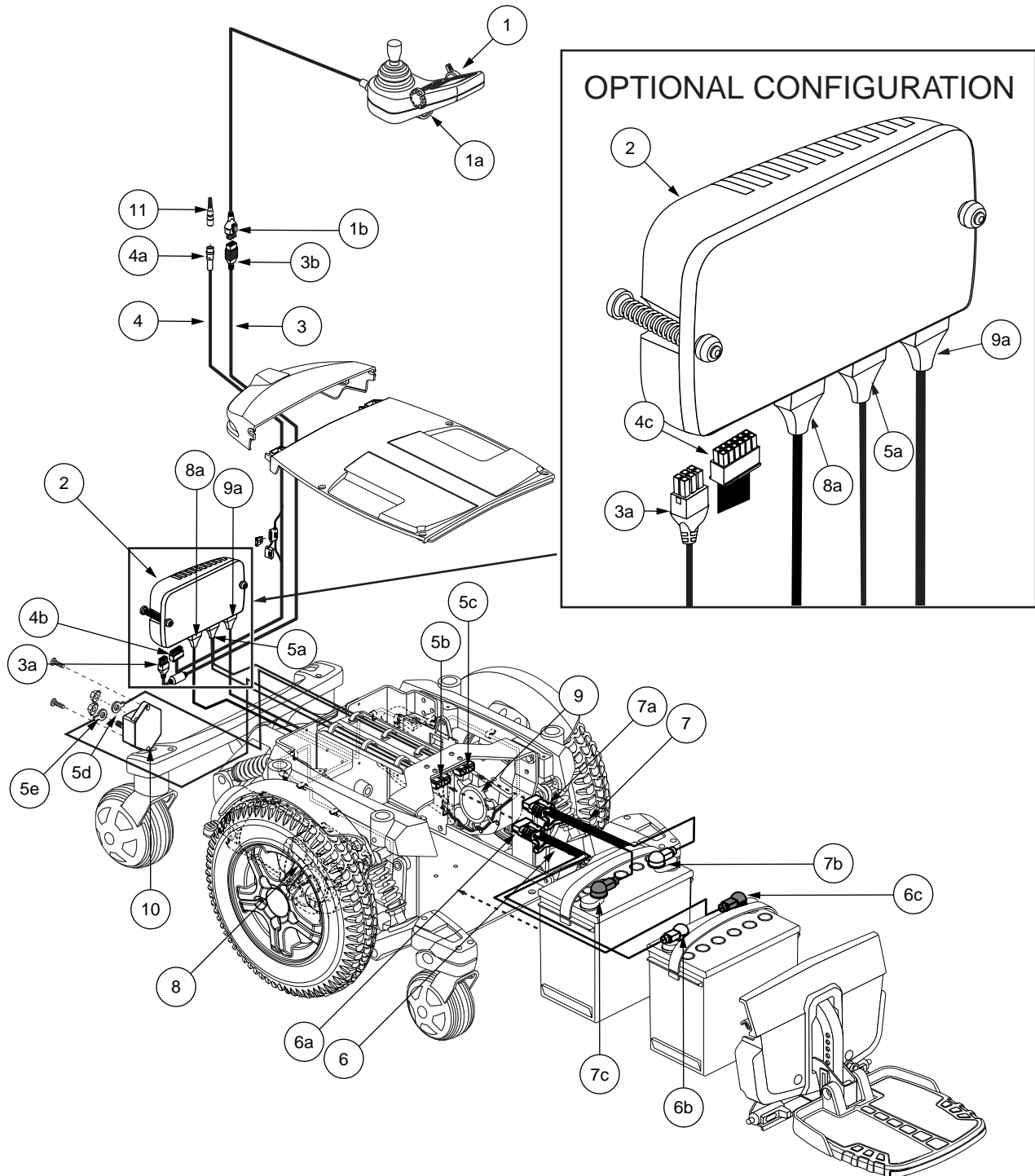


Diagram 1. Quantum 6000 Q-Logic Troubleshooting Key

## TROUBLESHOOTING ADDENDUM

### SOFTWARE ERROR

#### Symptoms:

- The batteries are fully charged.
- All electrical components are connected correctly.
- The power turns on but displays a fault code when the on/off key is deflected.

#### Diagnosis:

There is a module fault in the system.

#### Solution:

Use the following procedure to find the source of the problem:

1. Check that all of the bus connections are correct. **See diagram 3.**
2. Measure resistance on the bus cables. **See figure 16.**
  - If your multimeter indicates an open for any of the measurements, then replace the bus cable (3) and retest the system.
  - If your multimeter indicates less than 1 ohm for all of the measurements, then go to the next step.
3. If your power chair is equipped with multiple input devices, then there will be a splitter or multiplier on the bus line.
  - If there is no splitter, then contact Quantum Technical Service for further troubleshooting help.
  - If there is a splitter or multiplier on the bus line, then go to the next step.
4. Measure resistance on the splitter or multiplier bus cables. **See figure 17.**
  - If your multimeter indicates an open for any of the measurements, then replace the splitter or multiplier and retest the system.
  - If your multimeter indicates less than 1 ohm for all of the measurements, then go to the next step.
5. Contact Quantum Technical Service for further troubleshooting.

### JOYSTICK ERROR

#### Symptoms:

- The batteries are fully charged.
- All electrical components are connected correctly.
- The joystick displays a fault code when the on/off key is deflected.

#### Diagnosis:

There is an input communication error.

#### Solution:

Use the following procedure to find the source of the problem:

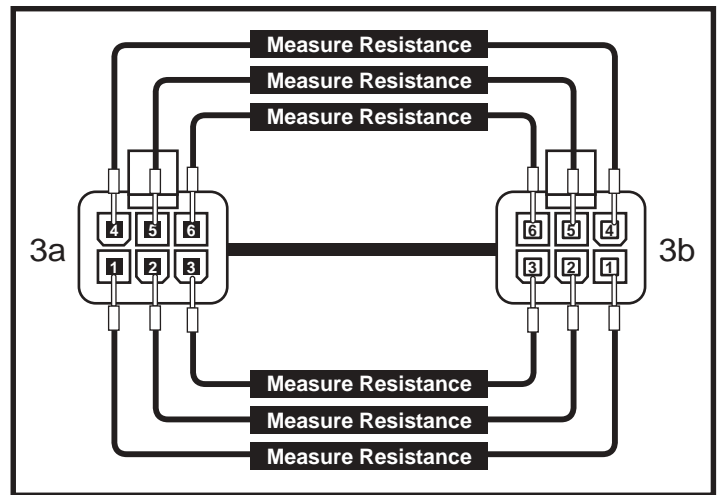


Figure 16. Bus Cables (3)

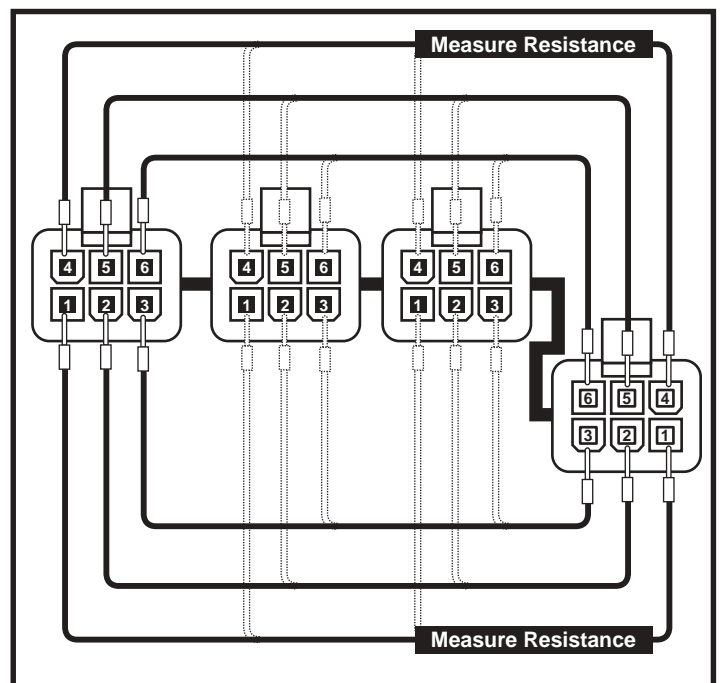


Figure 17. Splitter or Multiplier Bus Cables