

SECTION 3 - FLASH CODE DIAGNOSTICS

Flash Code #2 - Battery Fault

Symptoms:

Battery Condition Meter LEDs flash two times then pause.

Diagnosis:

The battery voltage at the FLIGHT power module is about 20VDC. This is most likely due to batteries that are not getting charged properly or at all. Use the same procedure as described in "Left Red Battery Condition Meter Flashing."

Flash Code #3 - Left Motor Fault

Symptom:

Battery Condition Meter LEDs flash three times then pause.

Diagnosis:

This is an indication of a left motor harness open.

Solution:

Use the following procedure to clear the fault code:

1. Remove the seat. Refer to the power base owner's manual.
2. Remove the rear shroud. See figure 3.
3. Remove the center shroud. See figure 3.
4. Unplug connector 5b from the power module (6). See diagram 3.
5. Measure resistance across pin 1 and pin 2 on connector 5b. See figure 22.
 - If your multimeter does not indicate 0.5 to 1.5 ohms, then go to the next step.
 - If your multimeter indicates about 0.5 to 1.5 ohms, then replace the power module (6) and retest the system.
6. Unplug connector 12a from connector 5a. See diagram 3.
7. Measure resistance across pin 1 and pin 2 on connector 12a. See figure 23.
 - If your multimeter does not indicate 0.5 to 1.5 ohms, then go to the next step.
 - If your multimeter indicates about 0.5 to 1.5 ohms, then replace the left motor interface harness (5) and retest the system.
8. Remove the brushes from the left motor and inspect them. See figure 24.
 - If the brushes are worn below 0.25 in. or physically damaged, then replace the brushes and retest the system.
 - If the brushes are not worn below 0.25 and are not physically damaged, then replace the left motor (12) and retest the system.

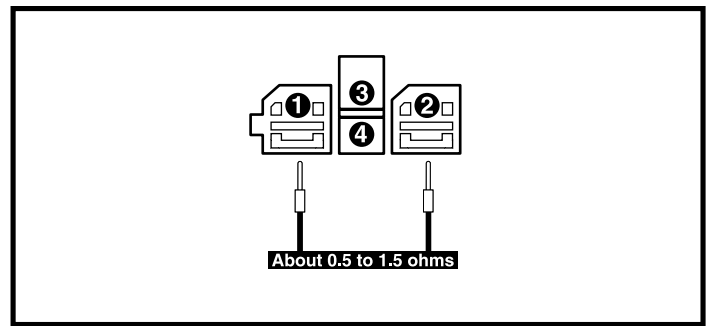


Figure 22. Connector 5b

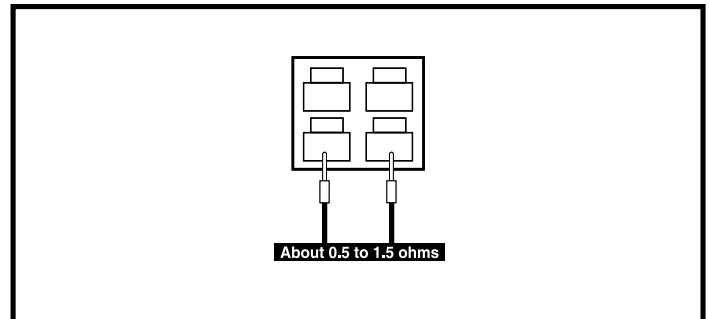


Figure 23. Connector 12a

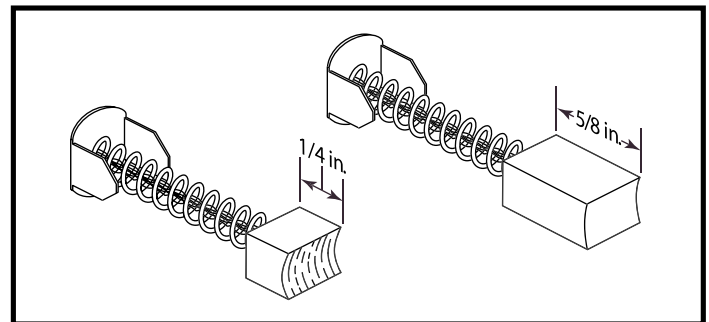


Figure 24. Motor Brushes

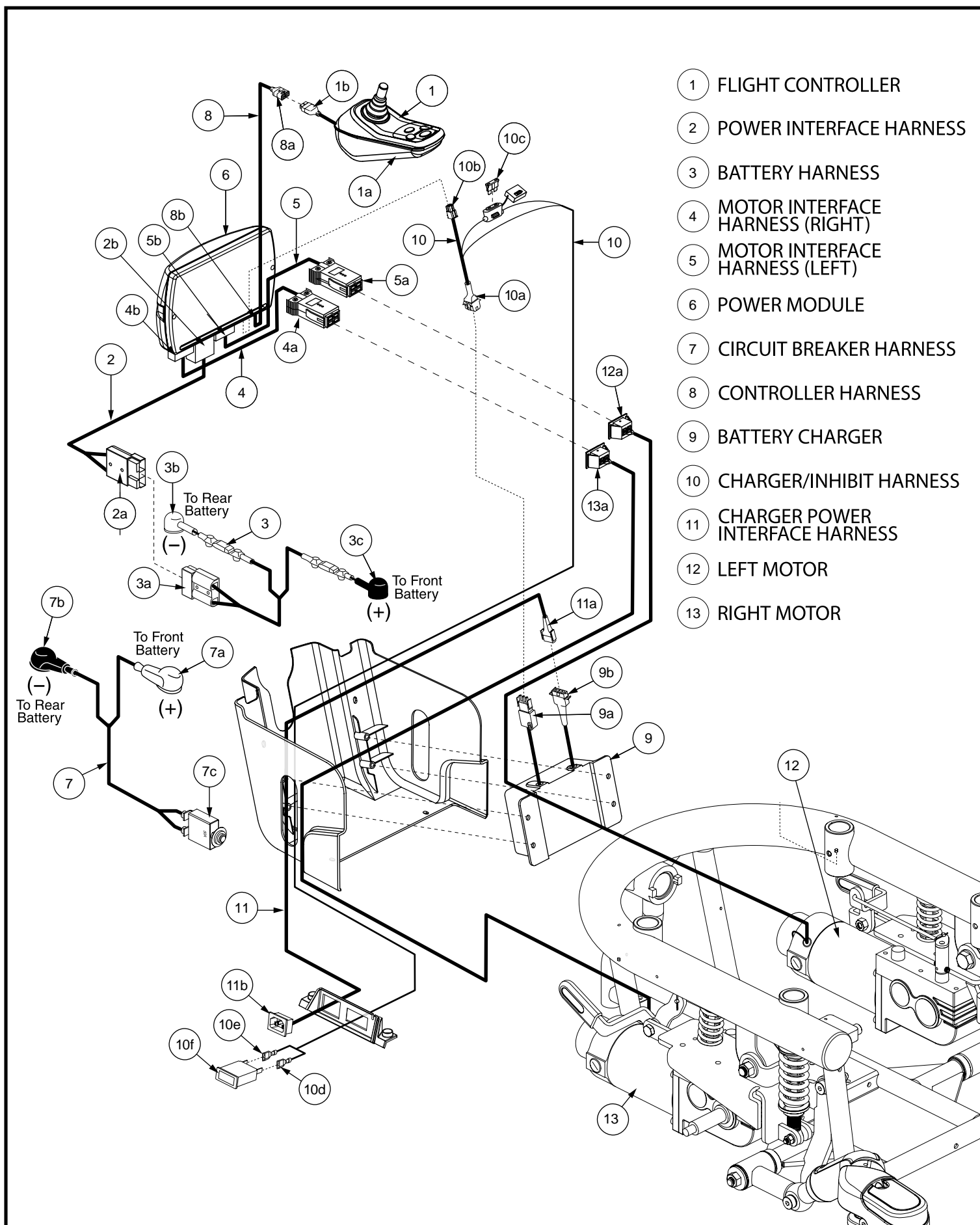


Diagram 2.