

## Battery Condition Meter LEDs Chase Right-to-Left

### Symptoms:

Battery Condition Meter LEDs chase from right to left.

### Diagnosis:

The FLIGHT controller is in lock out mode.

### Solution:

Use the following procedure to unlock the FLIGHT controller (1):

1. Turn on power to the controller.
2. While the power is on, press and hold the on/off key until the joystick beeps.

**NOTE:** *This will take a few seconds and as soon as you press the on/off key, the battery condition meter LEDs will go out. Continue to press the on/off key.*

3. The battery condition LEDs will scroll up, then ripple right to left. If the controller is on for more than about 15 seconds, the controller will power down.

To bring the chair out of lock out mode:

1. Press the on/off key.
2. Press the horn button twice within ten seconds.

## Steady Flash of Battery Condition Meter LEDs

### Symptoms:

Steady Flash of Battery Condition Meter LEDs

### Diagnosis:

The joystick was out of neutral at power up (OONAPU). This feature will keep the chair from moving if the joystick is accidentally moved when the on/off key is pressed.

### Solution:

Use the following procedure to clear the code:

1. Press the on/off key to turn off the power.
  2. Move the joystick around and check for physical damage.
  3. Release the joystick to the neutral (center) position.
  4. Press the on/off key to turn on the power.
- *If the fault occurs again, then replace the FLIGHT controller (1) and retest the system.*

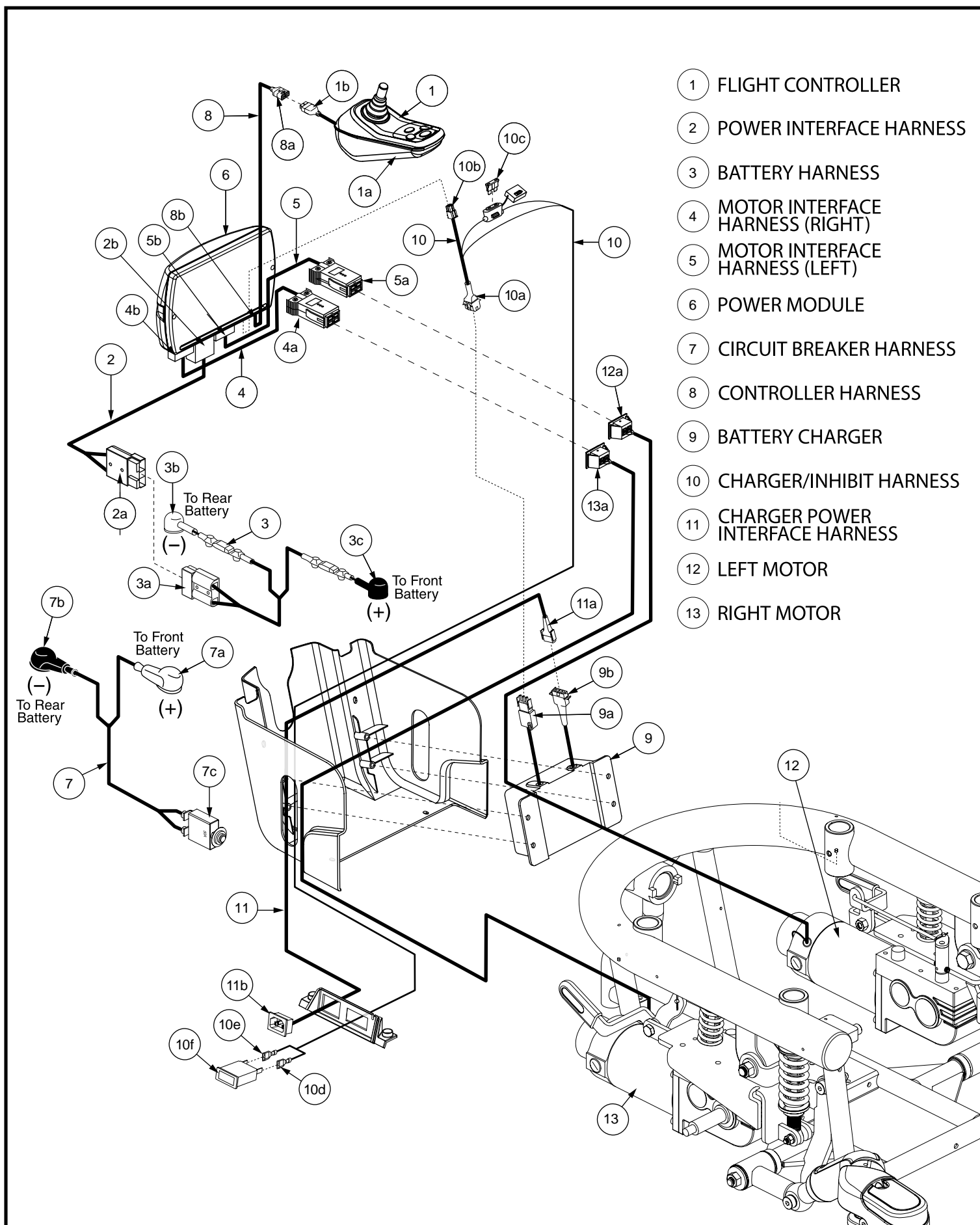


Diagram 2.